

INDEX

BLACK HAWK COUNTY, IOWA:ss

FEE BOOK # 2006 1918

PROOF

FILED FOR RECORD JUL 21

2005

AT 4:00 P.M.

FEE 1-5.00-1.00X

COMPARED

*Patricia A. Liso*

BLACK HAWK COUNTY RECORDER

HELLAND ENGINEERING &amp; SURVEYING LTD

Jeffrey P. Helland, 1107 Technology Parkway, Cedar Falls, Iowa 50613-6951, (319)-266-0161

UNITED STATES PUBLIC LAND SURVEY CORNER CERTIFICATE  
OFLAND SURVEY MONUMENTS SITUATED IN SECTION NO. 9, TOWNSHIP NO. 88 NORTH, RANGE  
NO. 12 WEST OF THE FIFTH PRINCIPAL MERIDIAN, BLACK HAWK COUNTY, IOWA.

PREVIOUSLY RECORDED IN \_\_\_\_\_

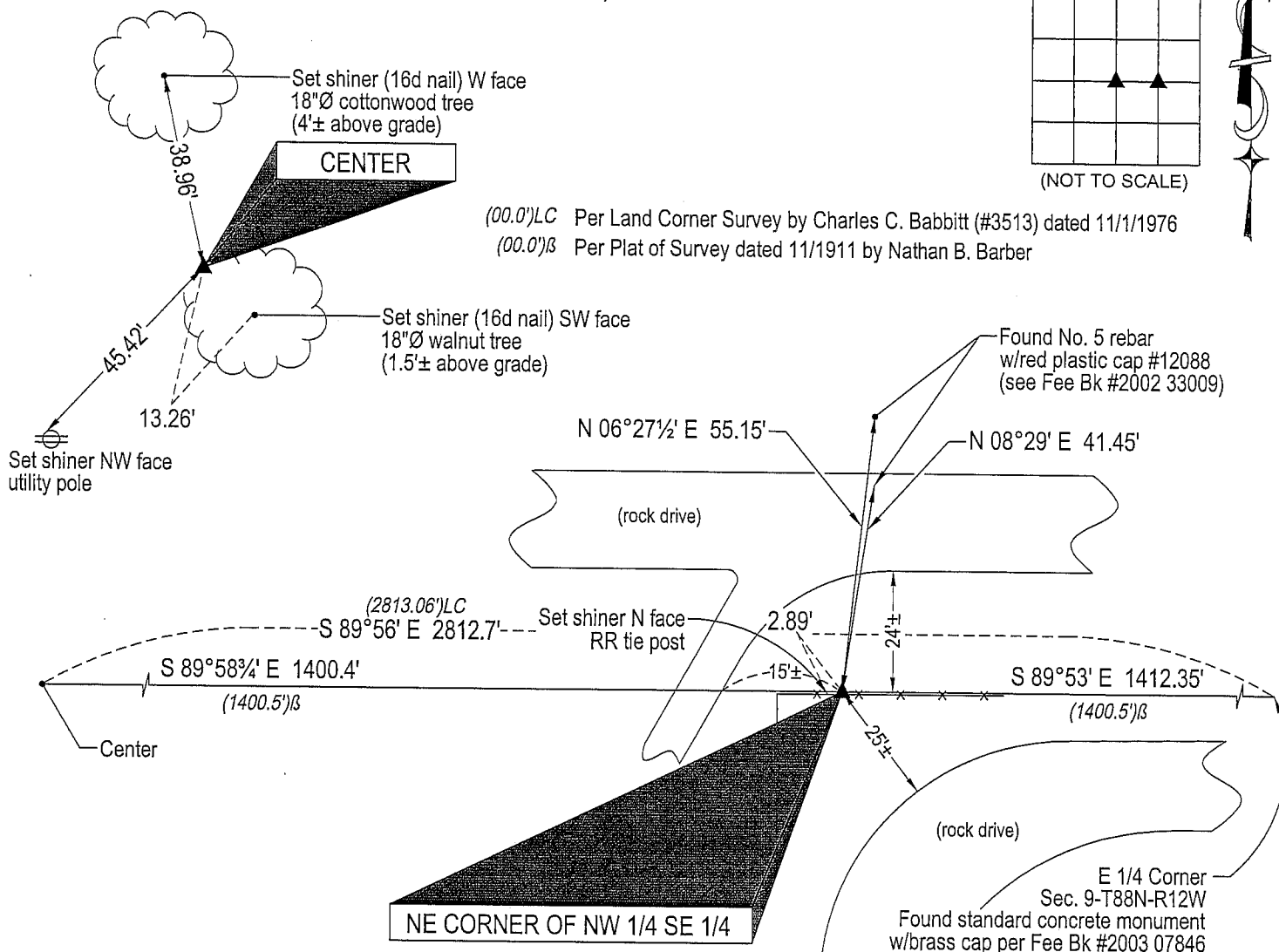
(SHOW REASON FOR PREPARING THIS CERTIFICATE, THE EVIDENCE AND DETAILED PROCEDURES USED IN ESTABLISHING THE  
CORNER POSITIONS AND MONUMENTATION FOUND OR PLACED.)

## MONUMENT DESCRIPTION AND REMARKS:

No USPLSCC on file. Survey completed in the NW 1/4 SE 1/4 of Sec. 9-T88N-R12W.

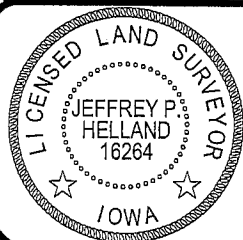
→ CENTER: Plat of Survey by Nathan B. Barber dated 11/1911 calls for "Set big Niggerhead, Cedar Stake on North." Land  
Corner Survey by Charles C. Babbitt dated 11/1/1976 calls for "Found Granite Stone 18" deep, Set Iron Pin over 2"  
exposed." Found No. 4 rebar, flush, corresponding to said Land Corner Survey.→ NE CORNER NW 1/4 SE 1/4: Plat of Survey by Nathan B. Barber dated 11/1911 calls for "Set Niggerhead, Cedar Stake  
on East." Found dark brown granite stone 1'±(N-S)x0.7'±(E-W) top view corresponding to said Plat of Survey. Cut "X" on  
top of stone and set No. 4 rebar w/OPC #16264 0.48' South of "X" for magnetic detection. Stone is flush. Stone is 0.4' N  
& 5.8' W of position used per Plat of Survey dated 6/7/2002 recorded in Fee Bk #2002 33009 and is 1.3' N & 5.8' W of  
position used per Plat of Survey dated 12/22/2003 recorded in Fee Bk #2004 20358.

## PLAN VIEW

(SHOW A MINIMUM OF THREE REFERENCE TIES TO DURABLE PHYSICAL OBJECTS, RELEVANT MONUMENTS AND PHYSICAL  
CONDITIONS THAT WILL ENABLE RECOVERY OF THE CORNER.)HELLAND ENGINEERING & SURVEYING, LTD.  
1107 Technology Parkway  
Cedar Falls, Iowa 50613-6951  
(319)-266-0161shiner = 8d nail & 1 15/16"Ø metal shiner  
(Bearings based upon Geodetic North)

(00') Recorded As

File Name: 05-215c1.dwg

I hereby certify that this land surveying document was prepared  
and the related survey work was performed by me or under my  
direct personal supervision and that I am a duly licensed Land  
Surveyor under the laws of the State of Iowa.*Jeffrey P. Helland* 6/29/05  
Jeffrey P. Helland  
License Number 16264  
My license renewal date is December 31, 2005.  
All pages or sheets are covered by this seal except:

## LIST CORNERS TO BE INDEXED

CORNER	SECTION	TOWNSHIP	RANGE
CENTER	9	88N	12W
NE CORNER NW 1/4 SE 1/4	9	88N	12W