

Kirk D. Eschliman, P.L.S. Iowa Reg. No. 9961, 723 Broadway Street, Waterloo, Iowa 50703 - Phone: 319-234-0509

UNITED STATES PUBLIC LAND SURVEY CORNER CERTIFICATE  
OF

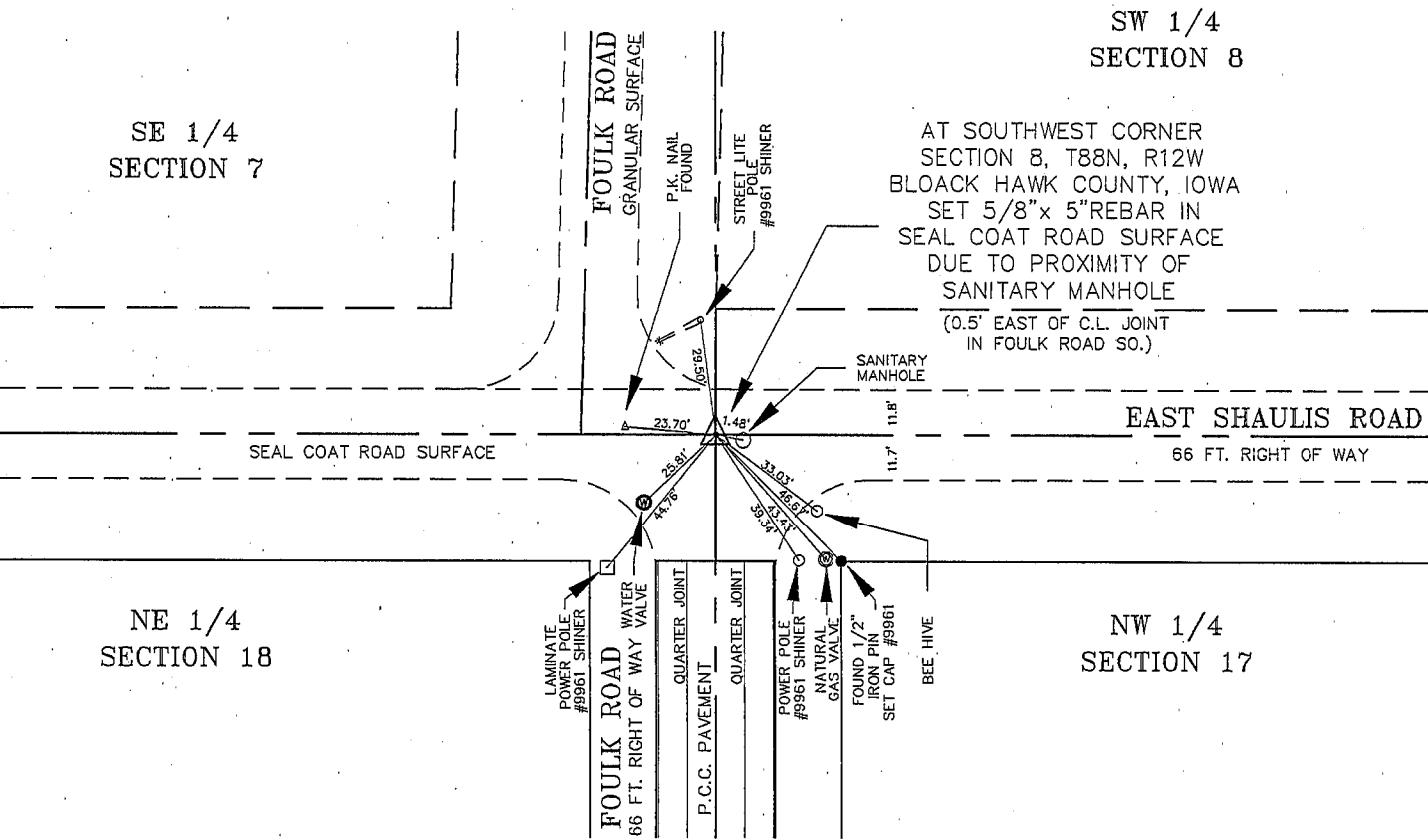
Land Survey Monuments situated in Section EIGHT (8), Township 88N, Range 12W, of the Fifth Principal Meridian, BLACK HAWK County, Iowa. Previously recorded in (NOT PREVIOUSLY RECORDED) of the County Recorder's Office.  
(book, page, document number, etc.)

(Show reason for preparing this certificate, the evidence and detailed procedures used in establishing the corner positions and monumentation found or placed.)

Monument Description and Remarks: PREVIOUS MONUMENTATION HAD BEEN DESTROYED DURING CONSTRUCTION OF SANITARY SEWER FACILITIES FOR SUBDIVISIONS TO THE SOUTH. LOCATION WAS RE-ESTABLISHED FROM MONUMENTATION WITHIN THOSE SAME SUBDIVISIONS OF RECORD, MORE PARTICULARLY RANDALL'S SECOND ADDITION TO BLACK HAWK COUNTY, IOWA. DUE TO PROXIMITY TO SANITARY SEWER MANHOLE, SET 5/8" x 5" LONG REBAR WITH "X" CUT IN TOP.

PLAN - VIEW

(Show a minimum of three reference ties to durable physical objects, relevant monuments and physical conditions that will enable recovery of the corner.)



I HEREBY CERTIFY THAT THIS LAND SURVEYING DOCUMENT WAS PREPARED BY ME OR UNDER MY DIRECT PERSONAL SUPERVISION AND THAT I AM A DULY REGISTERED LAND SURVEYOR UNDER THE LAWS OF THE STATE OF IOWA.

*Kirk D. Eschliman*  
KIRK D. ESCHLIMAN, P.L.S. IOWA REG. NO. 9961  
MY REGISTRATION RENEWAL DATE IS DECEMBER 31, 1997

SEAL:



GRAPHIC SCALE

0 50 100

(in feet)

1 Inch = 50 Ft.

08

T88N

R12W

LIST OF CORNERS TO BE INDEXED

Corners	Section	Township	Range
SW	08	88	12

HEINICK ENGINEERING GROUP, INC.  
CIVIL ENGINEERS & LAND SURVEYORS WITH OFFICES IN WATERLOO & CEDAR FALLS, IOWA

DRAWN BY: K.D.E. REF.: BK.: PG.:  
DATE: 04/09/96 C.A.D.D. FILE: 96A08G25.DWG PROJECT NO.: 96A08