

per MISC. BK.

320 p. 192

321 p. 004

SLSI 9-90

Kirk D. Eschliman, P.L.S. Iowa Reg. No. 9961, 723 Broadway Street, Waterloo, Iowa 50703 - Phone: 319-234-0509

UNITED STATES PUBLIC LAND SURVEY CORNER CERTIFICATE OF

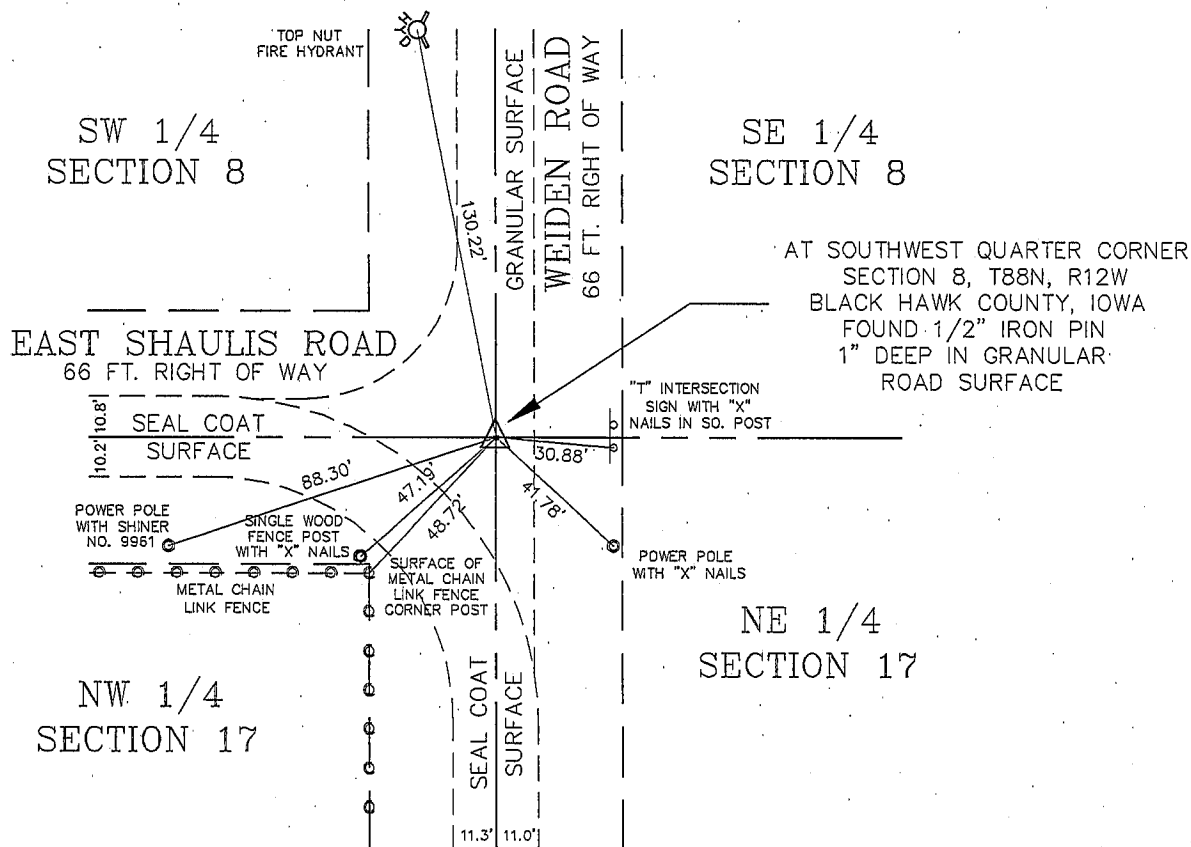
Land Survey Monuments situated in Section EIGHT (8), Township 88N, Range 12W, of the Fifth Principal Meridian, BLACK HAWK County, Iowa. Previously recorded in (NOT PREVIOUSLY RECORDED) of the County Recorder's Office. (book, page, document number, etc.)

(Show reason for preparing this certificate, the evidence and detailed procedures used in establishing the corner positions and monumentation found or placed.)

Monument Description and Remarks: FOUND HALF (1/2) INCH IRON PIN WITHOUT AN IDENTIFICATION CAP ATTACHED, APPROXIMATELY ONE (1) INCH BELOW THE GRANULAR ROAD SURFACE. TWO (2) SETS OF CROSSED ("X") NAILS WERE FOUND, THOUGH THERE WAS NO RECORDING OF THIS MONUMENT BEING SET. THE MONUMENT FOUND DOES CONFORM TO THE SURROUNDING SURVEYS.

PLAN - VIEW

(Show a minimum of three reference ties to durable physical objects, relevant monuments and physical conditions that will enable recovery of the corner.)



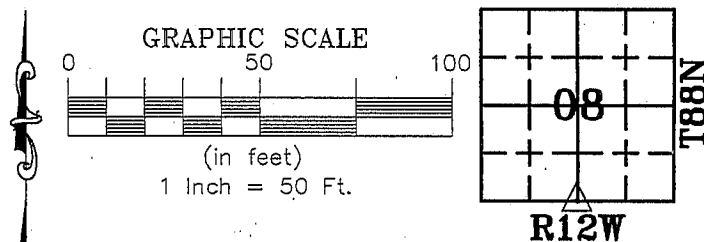
I HEREBY CERTIFY THAT THIS LAND SURVEYING DOCUMENT WAS PREPARED BY ME OR UNDER MY DIRECT PERSONAL SUPERVISION AND THAT I AM A DULY REGISTERED LAND SURVEYOR UNDER THE LAWS OF THE STATE OF IOWA.

Kirk D. Eschliman

DATE: 04/16/96

KIRK D. ESCHLIMAN, P.L.S. IOWA REG. NO. 9961
MY REGISTRATION RENEWAL DATE IS DECEMBER 31, 1997

SEAL:



LIST OF CORNERS TO BE INDEXED

Corners	Section	Township	Range
S 1/4	08	88	12

HEINICK ENGINEERING GROUP, INC.
CIVIL ENGINEERS & LAND SURVEYORS WITH OFFICES IN WATERLOO & CEDAR FALLS, IOWA
DRAWN BY: K.D.E. REF.: BK.: PG.:
DATE: 04/05/96 C.A.D.D. FILE: 96A08G23.DWG PROJECT NO.: 96A08

(SEE Attached)