

V J ENGINEERING 1501 TECHNOLOGY PARKWAY SUITE 100 CEDAR FALLS IA 50613

UNITED STATES PUBLIC LAND SURVEY CORNER CERTIFICATE  
OF

Land Survey Monuments situated in Section 8, Township 88 N, Range 12 W, of the Fifth Principal Meridian, BLACK HAWK County, Iowa  
Previously recorded in Book \_\_\_\_\_, Page \_\_\_\_\_.

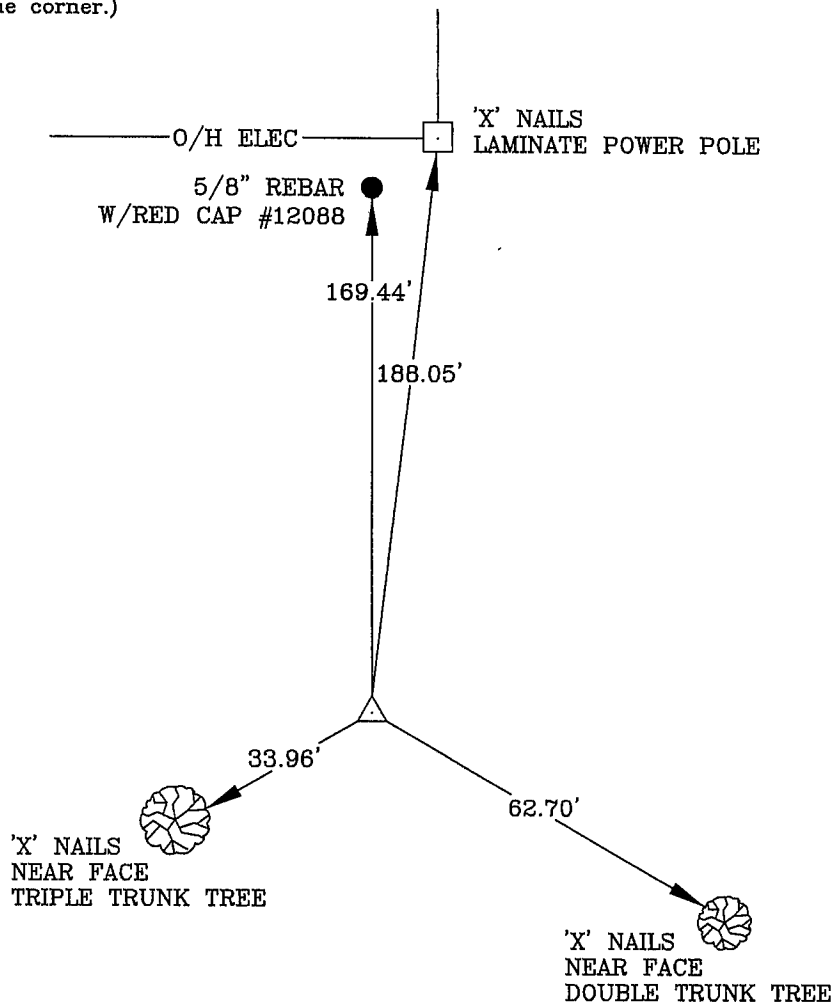
Show reason for preparing this certificate, the evidence and detailed procedures used in establishing the corner positions and monumentation found or placed.)

Monument Description and Remarks: NE CORNER, NW 1/4, SE 1/4, 8-88N-12W

SET 5/8" X 24" REBAR, W/ RED CAP #12088 3" ABOVE THE GROUND AT MIDPOINT BETWEEN CENTER AND EAST 1/4 CORNER OF SECTION 8

PLAN - VIEW

(Show a minimum of three reference ties to durable physical objects, relevant monuments and physical conditions recovery of the corner.)



I hereby certify that the survey work was completed and this certificate was prepared by me or under my direct personal supervision and that I am a duly registered land surveyor under the laws of the state of Iowa.



Wendell J. Lupkes 1-26-06  
IOWA L.L.S. NO. 12088

List Corners to be Indexed

Corners	Section	Twp	Range
NE COR.,	8	88	12
NW 1/4,			
SE 1/4			



VJ Engineering  
1501 Technology Parkway  
Cedar Falls, Iowa - 319-266-5829

SECTION CORNER  
REFERENCE TIES

scale  
NONE  
drawn by  
MAK  
date  
1/25/06