

Paul H. Helland, 1107 Technology Parkway, Cedar Falls, Iowa 50613-6951, (319)-266-0161

UNITED STATES PUBLIC LAND SURVEY CORNER CERTIFICATE
OFLAND SURVEY MONUMENTS SITUATED IN SECTION NO. 8, TOWNSHIP NO. 88 NORTH, RANGE
NO. 12 WEST OF THE FIFTH PRINCIPAL MERIDIAN, BLACK HAWK COUNTY, IOWA.

PREVIOUSLY RECORDED IN _____

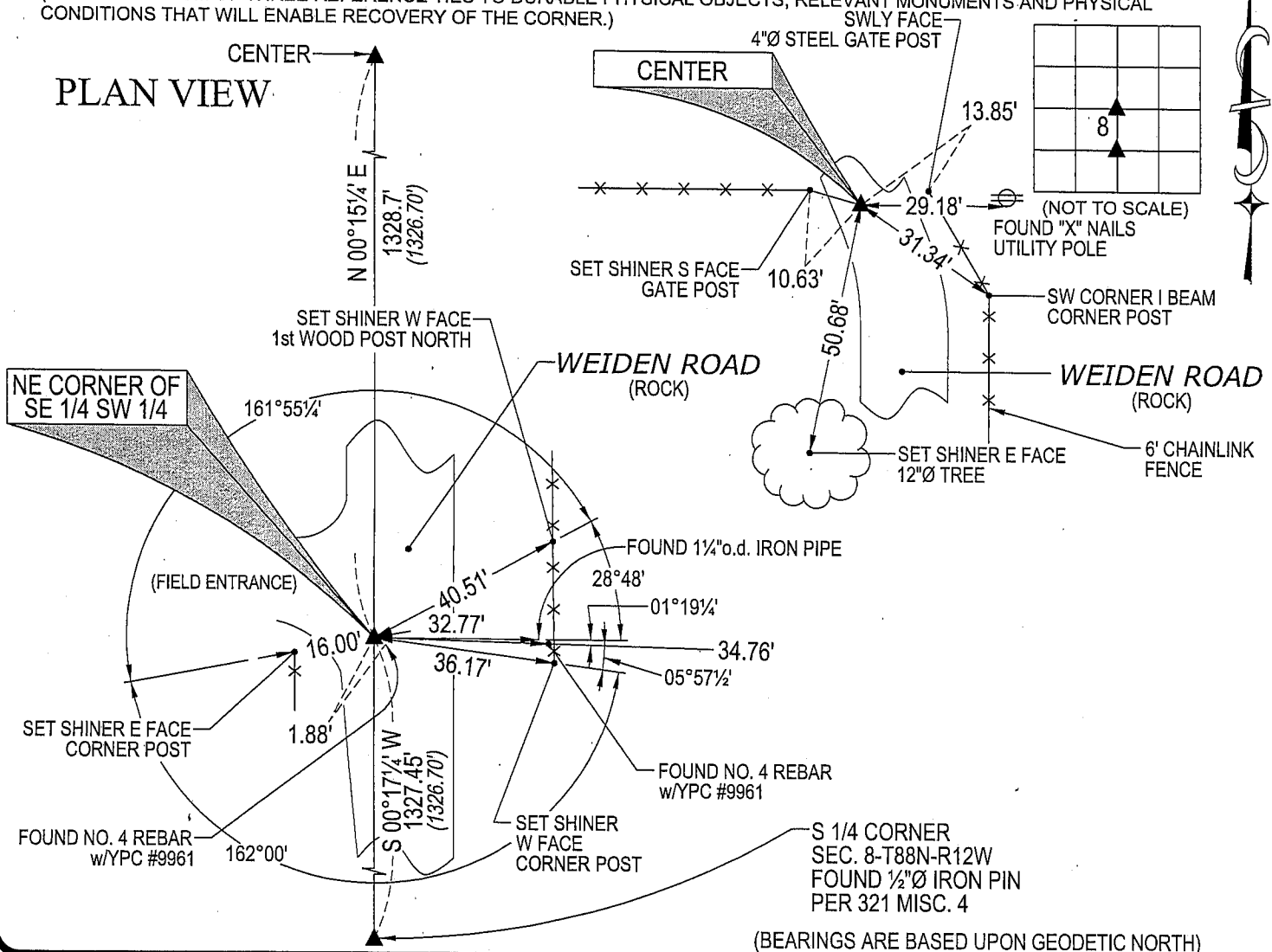
(SHOW REASON FOR PREPARING THIS CERTIFICATE, THE EVIDENCE AND DETAILED PROCEDURES USED IN ESTABLISHING THE
CORNER POSITIONS AND MONUMENTATION FOUND OR PLACED.)

MONUMENT DESCRIPTION AND REMARKS:

NO USPLSCC ON FILE. SURVEY COMPLETED IN THE SE 1/4 NE 1/4 OF SEC. 7, THE NW 1/4 OF SEC. 8 AND THE
SW 1/4 OF SEC. 5, ALL IN T88N-R12W.

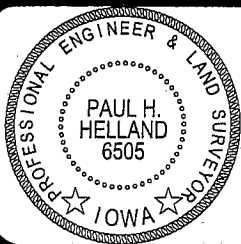
→ **CENTER:** NO BLACK HAWK COUNTY ENGINEER REFERENCE TIES AVAILABLE. AUDITOR'S SURVEY BK 1 PG
327 DATED 6/17/1868 CALLS FOR [STAKE]. SURVEY OF "J.F. BUSEY'S FARM" DATED 11/1911 BY ANTHAN B.
BARBER CALLS FOR [FOUND STONE]. PLAT OF SURVEY BY KIRK D. ESCHILMAN DATED 11/6/2004 FEE BK
#2005-11979) INDICATES A DISTANCE TO THE CENTER, BUT DOES NOT STATE WHAT WAS FOUND. STARTED
EXCAVATION AT FOUND 16d NAIL w/FLAGGING, FOUND 3 LIMESTONES, BIGGEST BEING 8"x5"x7". SET NO. 4
REBAR w/OPC #6505 IN MIDDLE OF 3 LIMESTONES.

→ **NE CORNER OF SE 1/4 SW 1/4:** NO BLACK HAWK COUNTY ENGINEER REFERENCE TIES AVAILABLE. CORNER
ESTABLISHED BY WILLIAM H. ROBINSON PER UNRECORDED PLAT OF SURVEY DATED 3/1972. FOUND 1"o.d.
IRON PIPE CORRESPONDING TO SAID UNRECORDED PLAT OF SURVEY. FOUND NO. 4 REBAR w/YPC #9961
1.88' SELY OF CORNER (SEE PLAT OF SURVEY FEE BK #2005-11979).

(SHOW A MINIMUM OF THREE REFERENCE TIES TO DURABLE PHYSICAL OBJECTS, RELEVANT MONUMENTS AND PHYSICAL
CONDITIONS THAT WILL ENABLE RECOVERY OF THE CORNER.)HELLAND ENGINEERING & SURVEYING, LTD.
1107 Technology Parkway
Cedar Falls, Iowa 50613-6951
(319)-266-0161SHINER = 8D NAIL & 1 5/16"Ø METAL SHINER
OPC = PLASTIC CAP (O=ORANGE, R=RED, Y=YELLOW)

(00') RECORDED AS

FILE NAME: 06-278C3.DWG

I hereby certify that this land surveying document was prepared
and the related survey work was performed by me or under my
direct personal supervision and that I am a duly licensed Land
Surveyor under the laws of the State of Iowa.

Paul H. Helland 12/13/26
Paul H. Helland
License Number 6505
My license renewal date is December 31, 2007.
All pages or sheets are covered by this seal except:

LIST CORNERS TO BE INDEXED

CORNER	SECTION	TOWNSHIP	RANGE
CENTER	8	88N	12W
NE CORNER SE 1/4 SW 1/4	8	88N	12W