

Paul H. Helland, 1107 Technology Parkway, Cedar Falls, Iowa 50613-6951, (319)-266-0161

UNITED STATES PUBLIC LAND SURVEY CORNER CERTIFICATE
OFLAND SURVEY MONUMENTS SITUATED IN SECTION NO. 7, TOWNSHIP NO. 88 NORTH, RANGE
NO. 12 WEST OF THE FIFTH PRINCIPAL MERIDIAN, BLACK HAWK COUNTY, IOWA.

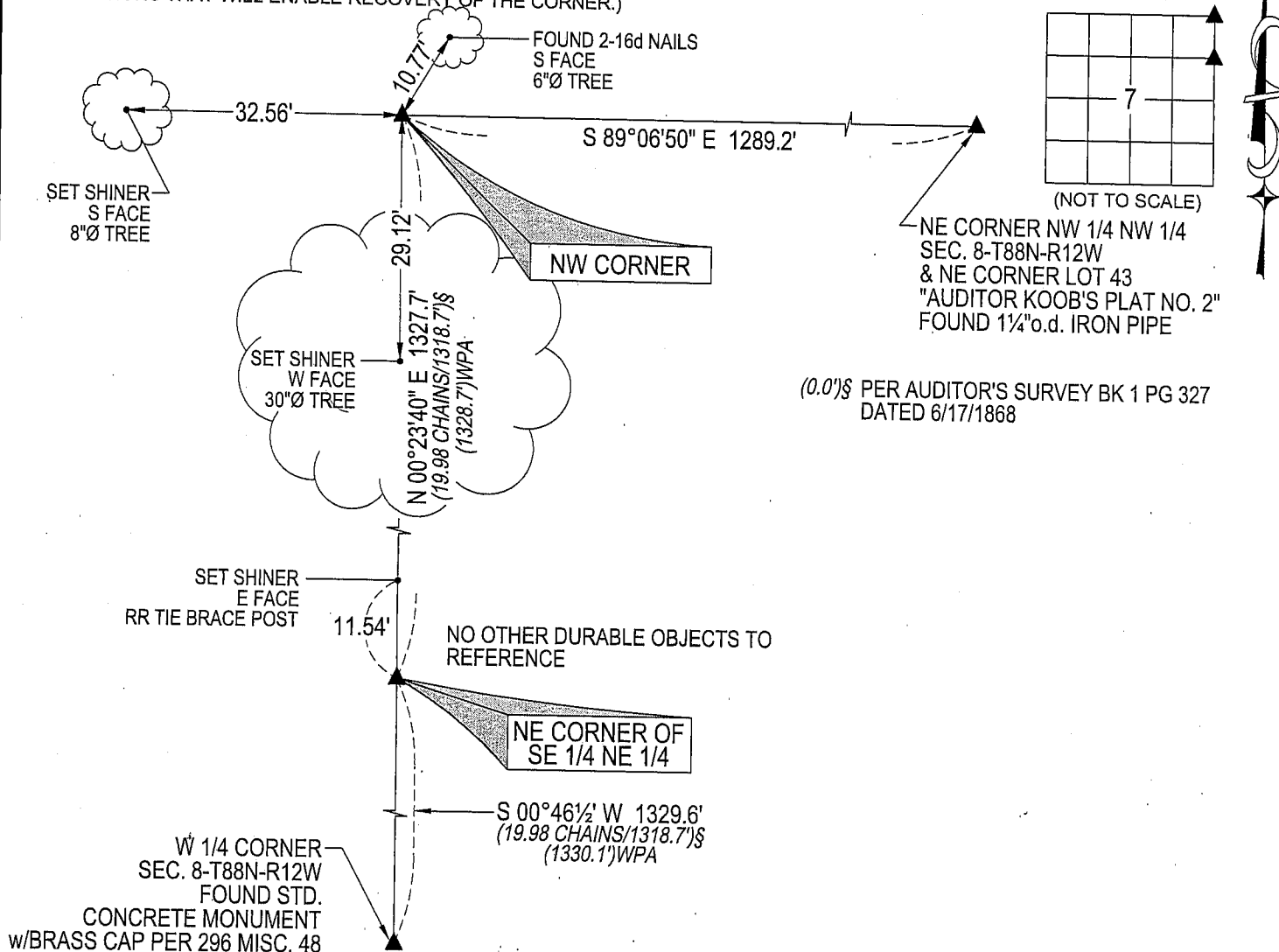
PREVIOUSLY RECORDED IN _____

(SHOW REASON FOR PREPARING THIS CERTIFICATE, THE EVIDENCE AND DETAILED PROCEDURES USED IN ESTABLISHING THE
CORNER POSITIONS AND MONUMENTATION FOUND OR PLACED.)

MONUMENT DESCRIPTION AND REMARKS:

NO USPLSCC ON FILE. SURVEY COMPLETED IN THE SE 1/4 NE 1/4 OF SEC. 7, THE NW 1/4 OF SEC. 8 AND THE
SW 1/4 OF SEC. 5, ALL IN T88N-R12W.→ **NE CORNER:** AUDITOR'S SURVEY BK 1 PG 327 DATED 6/17/1868 UTILIZED CORNER BUT DOES NOT STATE
WHAT IT WAS, WITH BEARING TREE [CEDAR 14 SOUTH 50]. WPA NOTES [EST. COR. FOUND OLD CEDAR
BEARING TREE STUMP SET S.C.M. ON BEARING & DISTANCE]. IOWA DOT CORNER STONE SURVEY DATED
11/1/1976 CALLS FOR [FOUND STD. CONC. MON. WITH STEEL FE. PO. NORTH SIDE]. FOUND STANDARD
CONCRETE MONUMENT w/BRASS CAP 0.7' DEEP.→ **NE CORNER OF SE 1/4 NE 1/4:** AUDITOR'S SURVEY BK 1 PG 327 DATED 6/17/1868 CALLS FOR [STONE]. FOUND
GRANITE STONE 3"x9" (TOP VIEW) x9" BY BASE OF OLD CORNER POST. SET NO. 4 REBAR w/OPC #6505 IN ITS
PLACE. PLACED STONE ON SOUTH SIDE OF REBAR.

PLAN VIEW

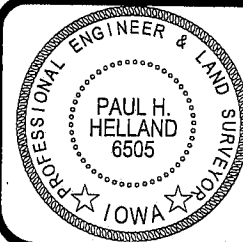
(SHOW A MINIMUM OF THREE REFERENCE TIES TO DURABLE PHYSICAL OBJECTS, RELEVANT MONUMENTS AND PHYSICAL
CONDITIONS THAT WILL ENABLE RECOVERY OF THE CORNER.)

(BEARINGS ARE BASED UPON GEODETIC NORTH)

HELLAND ENGINEERING & SURVEYING, LTD.
1107 Technology Parkway
Cedar Falls, Iowa 50613-6951
(319)-266-0161SHINER = 8D NAIL & 1 5/16"Ø METAL SHINER
OPC = PLASTIC CAP (O=ORANGE, R=RED, Y=YELLOW)

(00') RECORDED AS

FILE NAME: 06-278C1.DWG

I hereby certify that this land surveying document was prepared
and the related survey work was performed by me or under my
direct personal supervision and that I am a duly licensed Land
Surveyor under the laws of the State of Iowa.Paul H. Helland
License Number 6505
My license renewal date is December 31, 2007.

All pages or sheets are covered by this seal except:

LIST CORNERS TO BE INDEXED

CORNER	SECTION	TOWNSHIP	RANGE
NE CORNER	7	88N	12W
NE CORNER SE 1/4 NE 1/4	7	88N	12W