

ENTERED  
2-6-95  
8:51 AM

SLSI 9-90

UNITED STATES PUBLIC LAND SURVEY CORNER CERTIFICATE

OF

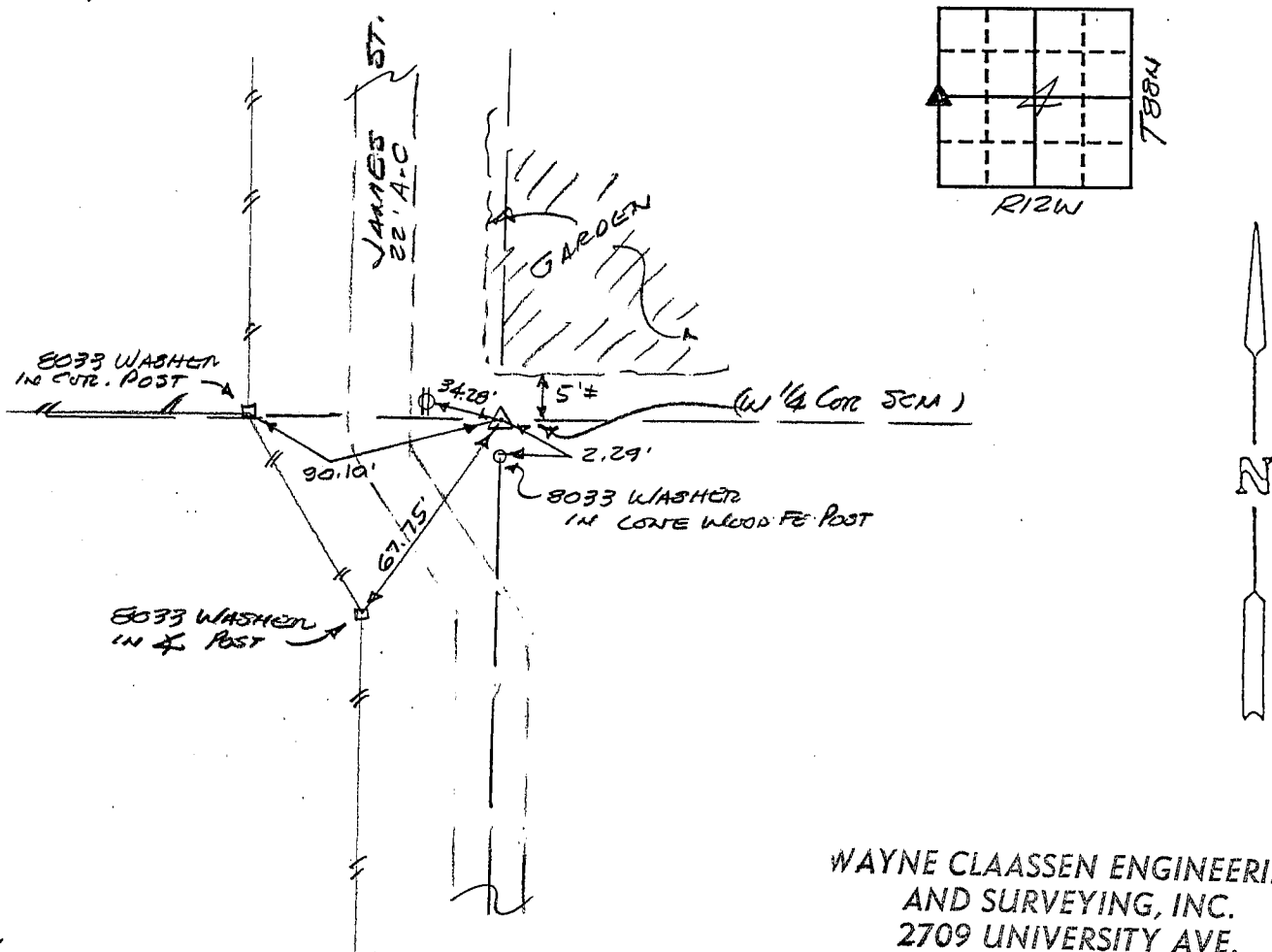
Land Survey Monuments situated in Section 4, Township 88N, Range 12W, of the Fifth Principal Meridian, BLACK HAWK County, Iowa.  
Previously recorded in N/A in County Recorder's Office.

(book, page, document number, etc.)  
(Show reason for preparing this certificate, the evidence and detailed procedures used in establishing the corner positions and monumentation found or placed.)

Monument Description and Remarks: FOUND STD. CONC. MON. 6" ABOVE GRADE

PLAN - VIEW

(Show a minimum of three reference ties to durable physical objects, relevant monuments and physical conditions that will enable recovery of the corner.)



438-4

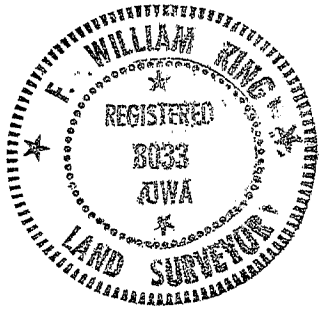
WAYNE CLAASSEN ENGINEERING  
AND SURVEYING, INC.  
2709 UNIVERSITY AVE.  
P.O. BOX 898  
WATERLOO, IA 50704

I hereby certify that the survey work was completed and this certificate was prepared by me or under my direct personal supervision and that I am a duly registered land surveyor under the laws of the state of Iowa.

Signature: F. William King  
Name typed or printed: F. WILLIAM KING

Date: 1-5-95 Reg. No. 8053

Corners	List Corners to be Indexed	Section	Twp	Range
<del>W 1/4</del>	<del>4</del>	<del>88N</del>	<del>12W</del>	
E 1/4	5	88N	12W	



SEAL

MISC. BK 314 p. 95