

ENTERED
2-6-95
BKS. I & II

SLSI 9-90

UNITED STATES PUBLIC LAND SURVEY CORNER CERTIFICATE

OF

Land Survey Monuments situated in Section 4, Township 88N, Range 12W, of the Fifth Principal Meridian, BLACK HAWK County, Iowa.
Previously recorded in N/A in County Recorder's Office.

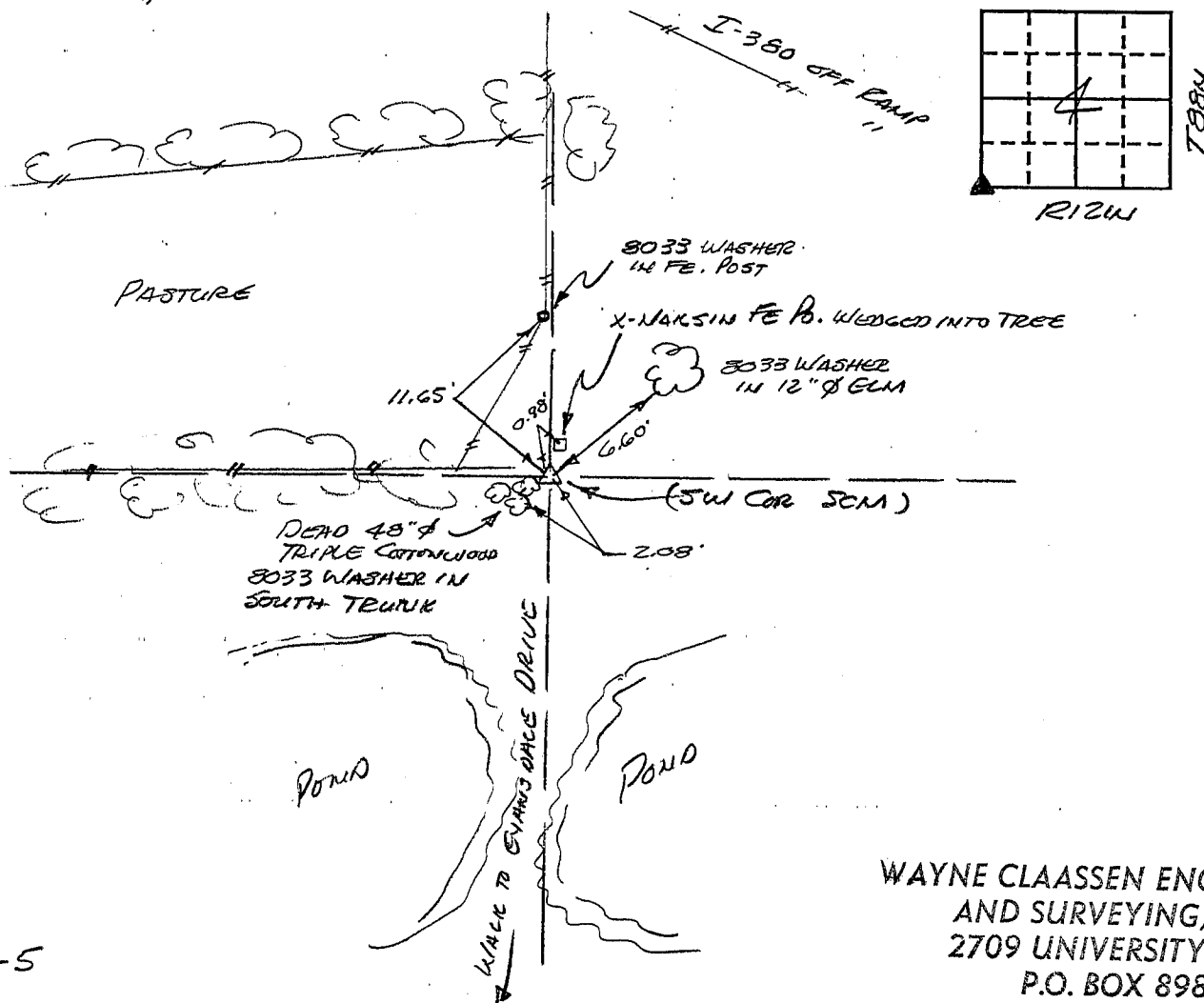
(book, page, document number, etc.)

(Show reason for preparing this certificate, the evidence and detailed procedures used in establishing the corner positions and monumentation found or placed.)

Monument Description and Remarks: FOUND STD. CONE MONUMENT 18" DEEP, SET "2" x 24" REDDAR & CAP OVER (6" EXPOSURE).

PLAN - VIEW

(Show a minimum of three reference ties to durable physical objects, relevant monuments and physical conditions that will enable recovery of the corner.)



WAYNE CLAASSEN ENGINEERING
AND SURVEYING, INC.
2709 UNIVERSITY AVE.
P.O. BOX 898
WATERLOO, IA 50704

I hereby certify that the survey work was completed and this certificate was prepared by me or under my direct personal supervision and that I am a duly registered land surveyor under the laws of the state of Iowa.

Signature: F. William King

Name typed or printed: F. WILLIAM KING

Date: 1-5-1995

Reg. No. 8033

SEAL



Corners	List Corners to be Indexed		
	Section	Twp	Range
SW	4	88N	12W
NE	8	88N	12W

MISC. BK 314 p. 93