

Doc ID: 005529590001 Type: GEN  
Kind: CORNER  
Recorded: 07/24/2014 at 09:49:58 AM  
Fee Amt: \$7.00 Page 1 of 1  
Black Hawk County Iowa  
JUDITH A MCCARTHY RECORDER  
File **2015-00001404**

\* WAYNE CLAASSEN ENGINEERING AND SURVEYING, INC.  
P.O. BOX 898 WATERLOO, IOWA 50704-0898

PHONE: (VOICE) 319-235-6294  
(FAX) 319-235-0028

UNITED STATES PUBLIC LAND SURVEY CORNER CERTIFICATE

Land Survey Monuments situated in Section 04, Township 88 North, Range 12 West, of the Fifth Principal Meridian, Black Hawk County County, Iowa.  
Previously recorded in \_\_\_\_\_ in County Recorder's Office.  
(book, page, document number, etc.)

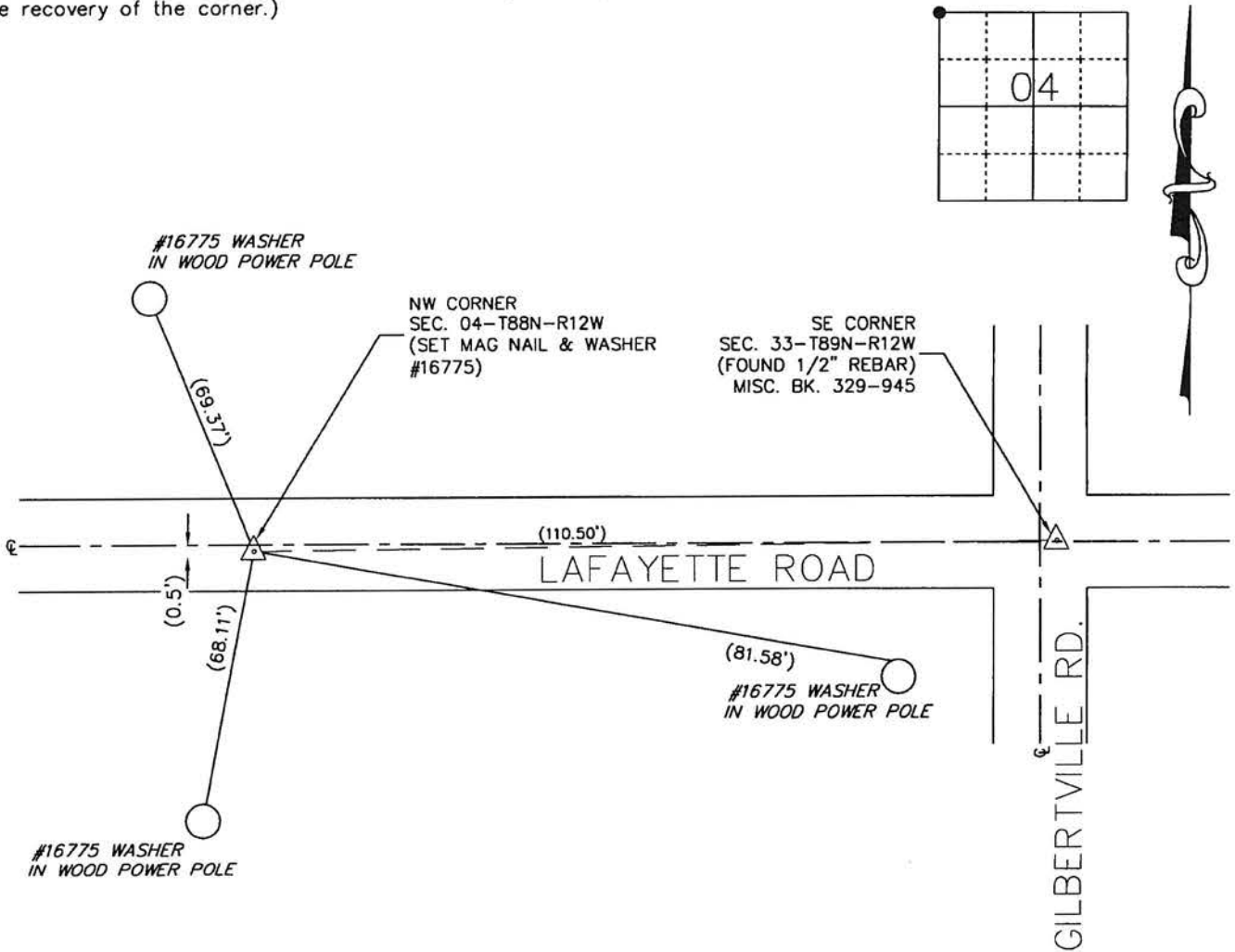
(Show reason for preparing this certificate, the evidence and detailed procedures used in establishing the corner positions and monumentation found or placed.)

Monument Description and Remarks

From Field Notes in Black Hawk County Engineer's Office: "Found niggerhead 7"x7"x10" with old oak hub along side. Lowered evidence, and set c.m. on top 12" deep." Sutton's Subdivision Plat (1947) shows "Conc. Mon. in Pavement". Sutton's Second Subdivision Plat (1950) show "'Found Brass Marker in Paving". Wilshire Height Subdivision Plat (1954) does not indicate what was there. Searched 5' area and did not find any surface monument. Set Mag nail and Washer #16775 110.5' feet West of the SE Corner of Section 33-T89N-R12W as per distance shown on Wilshire Heights. This certificate is being filed because there is no certificate on file.

PLAN - VIEW

(Show a minimum of three reference ties to durable physical objects, relevant monuments and physical conditions that will enable recovery of the corner.)



BK 711, PG. 60

I hereby certify that this land surveying document was prepared and the related survey work was performed by me or under my direct personal supervision and that I am a duly Licensed Land Surveyor under the laws of the State of Iowa.

Signature: David L. Scheil  
David L. Scheil, L.S.

Date: July 24, 2014 Lic. No. 16775

Pages or Sheets Covered by this Seal: THIS SHEET ONLY.

My license renewal date is December 31, 2014

SEAL

List Corners to be Indexed

Corners	Section	Twp	Range
NW CORNER,	04	88 N	12 W
NE CORNER,	05	88 N	12 W



(7.00)