

INDEX
MARGIN
PROOF
COMPARE

BLACK HAWK COUNTY IOWA, SS: **020784**
Filed for record JAN 31, 2002 at
12:30 PM. and recorded in Book _____
of _____ at Page _____
Christina J. Jess Recorder
FEE 1-5.00/
HELLAND ENGINEERING & SURVEYING LTD

Paul H. Helland, 1107 Technology Parkway, Cedar Falls, Iowa 50613-6951, (319)-266-0161

UNITED STATES PUBLIC LAND SURVEY CORNER CERTIFICATE OF

LAND SURVEY MONUMENTS SITUATED IN SECTION NO. 4, TOWNSHIP NO. 88 NORTH, RANGE
NO. 12 WEST OF THE FIFTH PRINCIPAL MERIDIAN, BLACK HAWK COUNTY, IOWA.
PREVIOUSLY RECORDED IN BOOK _____, PAGE _____.

(SHOW REASON FOR PREPARING THIS CERTIFICATE, THE EVIDENCE AND DETAILED PROCEDURES USED IN ESTABLISHING THE
CORNER POSITIONS AND MONUMENTATION FOUND OR PLACED.)

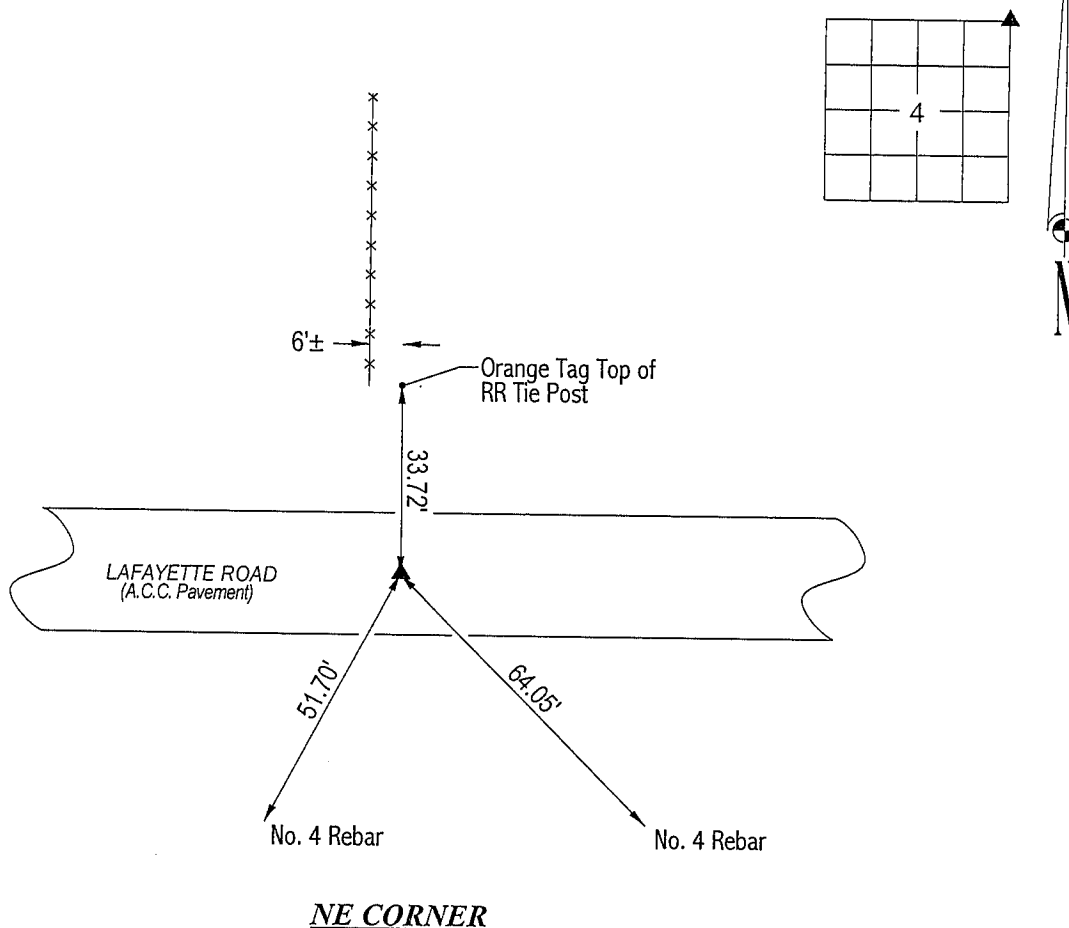
MONUMENT DESCRIPTION AND REMARKS:

SURVEY DONE IN SE 1/4 SE 1/4 OF SEC. 34-T89N-R12W.

NE CORNER: None of the county engineer reference ties (no date) remain. W.P.A. chaining note (dated 7/18/1941) distances
do not fit distances shown on county engineer reference ties. Found No. 5 rebar in centerline of A.C.C. pavement 0.13' below
A.C.C. surface. See USPLSCC for the S 1/4 Corner of Sec. 34-T89N-R12W. Corner has a large white painted "X" on it.

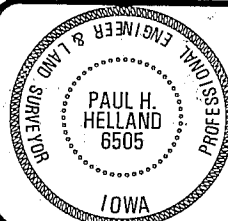
PLAN VIEW

(SHOW A MINIMUM OF THREE REFERENCE TIES TO DURABLE PHYSICAL OBJECTS, RELEVANT MONUMENTS AND PHYSICAL
CONDITIONS THAT WILL ENABLE RECOVERY OF THE CORNER.)



HELLAND ENGINEERING & SURVEYING, LTD.
1107 Technology Parkway
Cedar Falls, Iowa 50613-6951
(319)-266-0161

FILE NAME: 01-327C2.DRG



I hereby certify that this land surveying document was prepared
and the related survey work was performed by me or under my
direct personal supervision and that I am a duly licensed Land
Surveyor under the laws of the State of Iowa.

Paul H. Helland 1/23/02

Paul H. Helland
License Number 6505
My license renewal date is December 31, 2003.
All pages or sheets are covered by this seal except:

LIST CORNERS TO BE INDEXED
CORNER SECTION TOWNSHIP RANGE
NE CORNER 4 88N 12W

Rec BOOK **0345** PAGE **528**