

Reserved for County Recorder's use

2024-21324

RECORDED: 10/03/2024 03:04:35 PM

RECORDING FEE: \$7.00

REVENUE TAX: \$

COMBINED FEE: \$7.00

SANDIE L. SMITH, RECORDER
BLACK HAWK COUNTY, IOWA

* Jeffrey P. Helland, 6109 Chancellor Drive, Cedar Falls, Iowa 50613-6916, (319)-266-0161

UNITED STATES PUBLIC LAND SURVEY CORNER CERTIFICATE OF

LAND SURVEY MONUMENTS SITUATED IN SECTION NO 4, TOWNSHIP NO 88 NORTH, RANGE
NO 12 WEST OF THE FIFTH PRINCIPAL MERIDIAN, BLACK HAWK COUNTY, IOWA
PREVIOUSLY RECORDED IN #2015-00006438

(SHOW REASON FOR PREPARING THIS CERTIFICATE, THE EVIDENCE AND DETAILED PROCEDURES USED IN ESTABLISHING THE
CORNER POSITIONS AND MONUMENTATION FOUND OR PLACED)

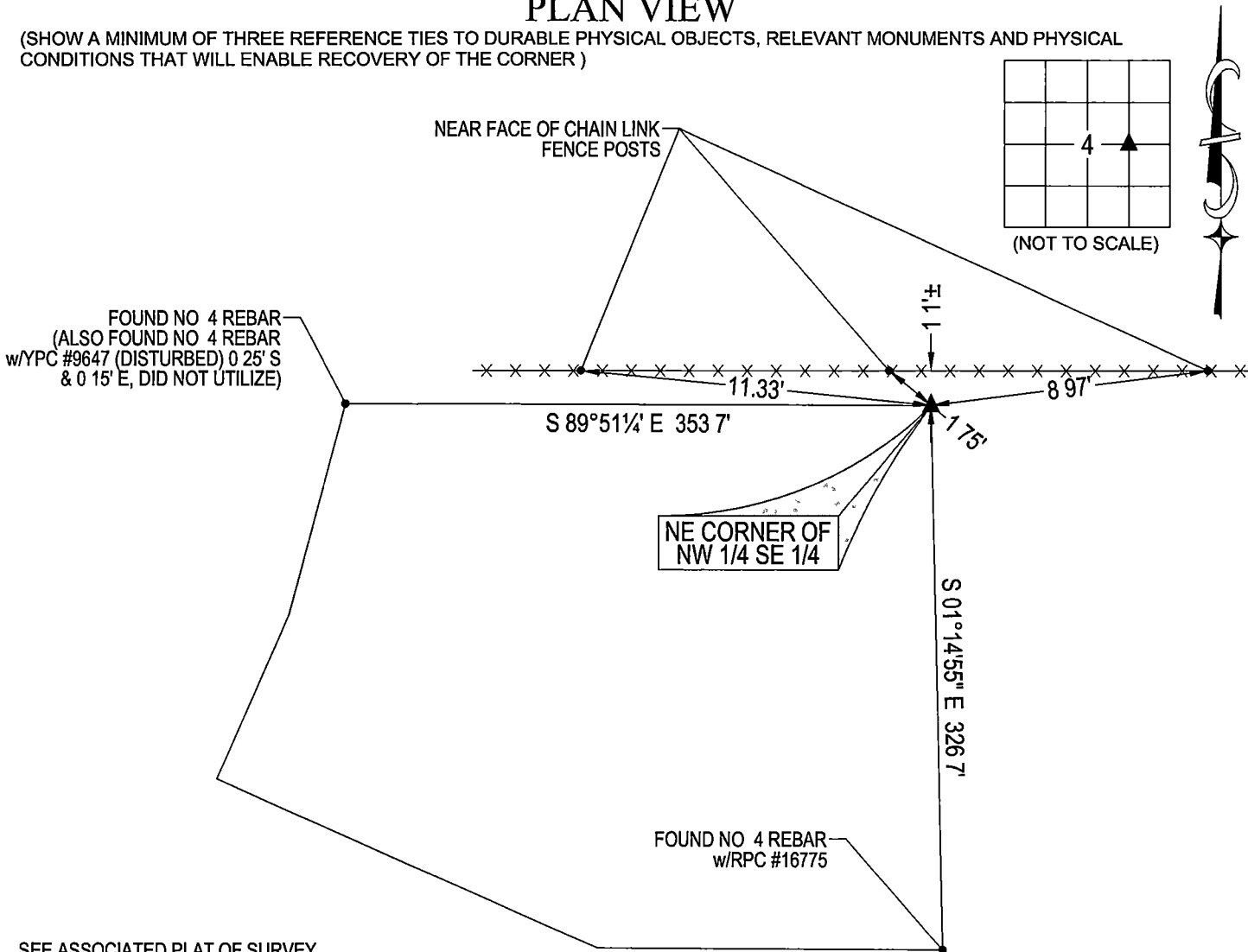
MONUMENT DESCRIPTION AND REMARKS

NO LONGER THREE VALID REFERENCE TIES SURVEY COMPLETED IN THE NW 1/4 SE 1/4 OF SEC 4-T88N-R12W

→ **NE CORNER OF NW 1/4 SE 1/4:** USPLSCC RECORDED IN #2015-00006438 DATED 10/10/2014 CALLS FOR [NO FIELD NOTES
FROM BLACK HAWK COUNTY ENGINEER'S OFFICE FOUND 1/2" REBAR AS PER FINAL PLAT OF JACKMAN FIRST
ADDITION AND PLAT OF SURVEY IN DOC NO 2010-03477 IN THE BLACK HAWK COUNTY RECORDER'S OFFICE THIS
CERTIFICATE WAS FILED BECAUSE THERE IS NO CERTIFICATE ON FILE] FOUND NO 4 REBAR AND UTILIZED AS THE
CORNER

PLAN VIEW

(SHOW A MINIMUM OF THREE REFERENCE TIES TO DURABLE PHYSICAL OBJECTS, RELEVANT MONUMENTS AND PHYSICAL
CONDITIONS THAT WILL ENABLE RECOVERY OF THE CORNER)



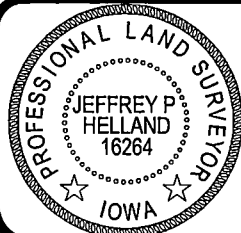
SEE ASSOCIATED PLAT OF SURVEY
FOR "RECORDED AS" INFORMATION

(BEARINGS ARE ASSUMED)



HELLAND ENGINEERING & SURVEYING, LTD.
6109 Chancellor Drive
Cedar Falls, Iowa 50613-6916
(319)-266-0161

SHINER = 4d NAIL & 1 5/16"Ø METAL SHINER DRAWN BY JPH
BRASS TAG = 4d NAIL & 13/16"Ø BRASS TAG
OPC = PLASTIC CAP (O=ORANGE, R=RED, Y=YELLOW)
(00') RECORDED AS FILE NAME 24-218-41 DWG



I hereby certify that this land surveying document was prepared
and the related survey work was performed by me or under my
direct personal supervision and that I am a duly licensed
Professional Land Surveyor under the laws of the State of Iowa
Jeffrey P. Helland
License Number 16264
My license renewal date is December 31, 2025
All pages or sheets are covered by this seal except

LIST CORNERS TO BE INDEXED

CORNER	SECTION / TOWNSHIP / RANGE		
NE COR NW 1/4 SE 1/4	4	88N	12W
SE COR SW 1/4 NE 1/4	4	88N	12W
SW COR SE 1/4 NE 1/4	4	88N	12W
NW COR NE 1/4 SE 1/4	4	88N	12W