

INDEX

BLACK HAWK COUNTY, IOWA:SS

FEE BOOK

2003 08089

PROOF

FILED FOR RECORD SEP 25 2002 AT 10:30 A.M. FEE 175.00/

COMPARED

Patricia A. Shaw

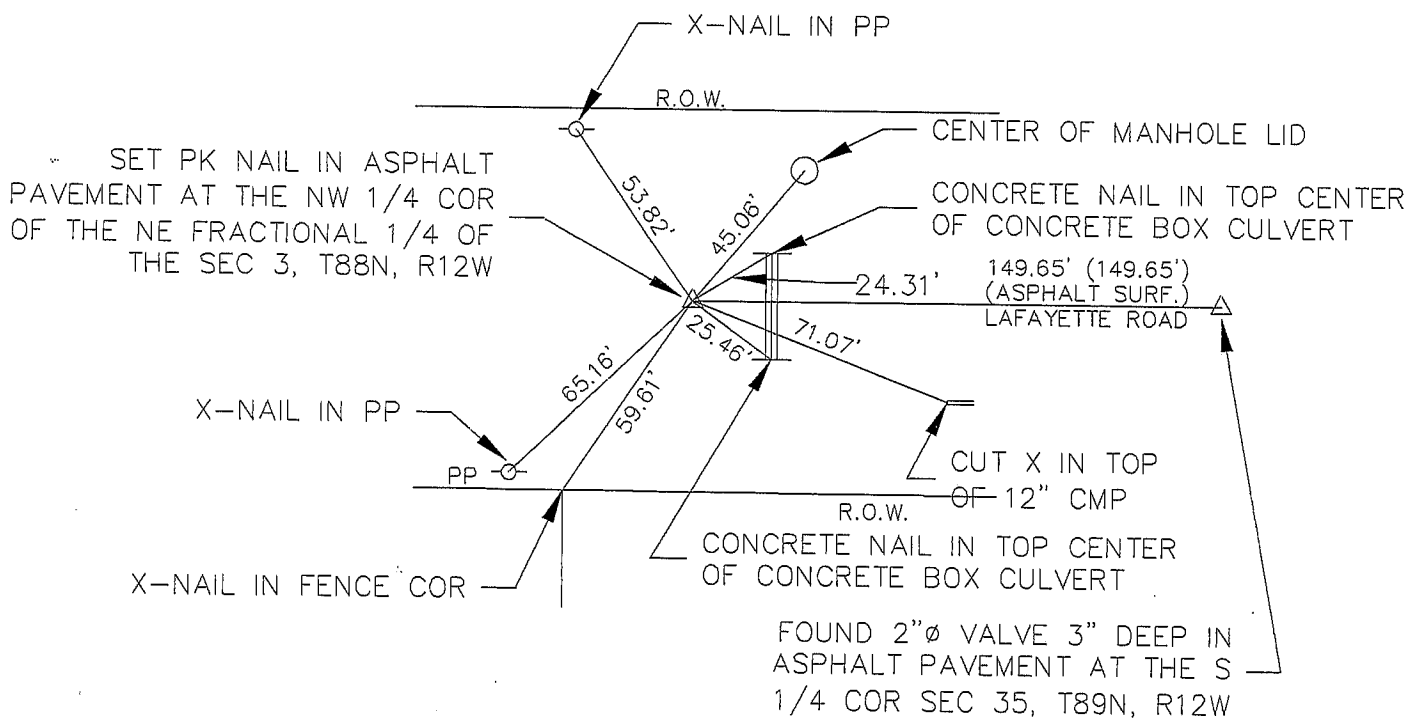
BLACK HAWK COUNTY RECORDER

SHOEMAKER & HAALAND 160 HOLIDAY ROAD CORALVILLE, IA 52241

**Shoemaker
& Haaland**160 HOLIDAY ROAD
CORALVILLE, IOWA 52241
PHONE: (319) 351-7150TITLE SECTION CORNER TIES FOR SECTION 3, T88N, R12W
BLACK HAWK COUNTY, IOWADATE 09/20/02
DRAWN REG
CHECKED REG
APPROVED REG
DRAWING 02166801U.S. PUBLIC LAND SURVEY CORNER CERTIFICATE
OFLAND SURVEY MOUNMENTS SITUATED IN
SECTION 3 TOWNSHIP 88 NORTH, RANGE 12 WEST,
OF THE FIFTH PRINCIPAL MERIDIAN, BLACK HAWK COUNTY, IOWA

MONUMENT DESCRIPTION AND REMARKS:

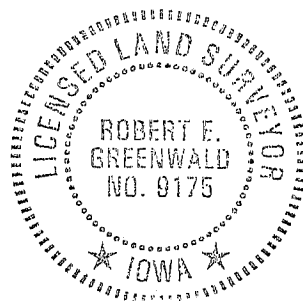
Set PK Nail in Asphalt Pavement on line extended west between the SE corner of Section 35, T89N, R12W and the S 1/4 of Section 35, T89N, R12 W a distance of 149.65 feet (which distance is recorded in the County Engineer Office Section Corner Ties Record Books) west of the S 1/4 corner of section 35, T89N, R12W

0.00' MEASURED DISTANCE
(0.00) RECORDED DISTANCE
R.O.W. RIGHT OF WAY
PP POWER POLEDate of survey, 08/23/02
FOR: CITY OF RAYMOND, IOWA
REQUESTED BY: CITY OF RAYMOND, IOWA

I hereby certify that this land surveying document was prepared and the related survey work was performed by me or under my direct personal supervision and that I am a duly Licensed Land Surveyor under the laws of the State of Iowa.

*Robert E. Greenwald*Robert E. Greenwald
Registration No. 91759/23/02
Date

My license renewal date is December 31, 2002.
All pages or sheets are covered by this seal except:



NOT TO SCALE

