

- Page #1 of 2 -

SLSI 9-94
BHCO 03-09

Monument Description and Remarks: E. 1/4 CORNER. FOUND MAG. NAIL w/STL. WASHER (PLS #16775) PER CUR. RECORD. AT SURF. OF EXIST. ACC PAVEMENT. COR. REF. TO S.E. COR. SECT. & C.L. GEOM. REF. (PER I&DOT PROJ. F-1000(2) AS-BUILT'S DTD. 1959) AS PART OF 2009 CO. H.M.A. RESURF PROJECT OF OLD HWY. #297 "SOUTH" OF DUBUQUE RD. INTERSECTION. SAID INT. WAS UPDATED/RESURF. OF SAME YEAR BY OTHER (MUNI. PROJECT). TEMP. REF. BOTH LAND COR. & I&DOT MON. FROM CUR. RECORD. OBSERVED EXCAVATION (BY OTHER) AT COR. LOC. IN NEW ACC PVMT., SO UPDATED MON. AS PART OF B.H. CO. RESURF. PROJECT REFERENCE. CONT. EXCAV. TO FND. 3/4" IRON PIPE OF RECORD, AND SET #5 REBAR THROUGH IRON PIPE w/ 2.5" ALUM. CAP IN A.C.C. PATCH. I&DOT MON. OBSERVED, YET "NOT RESET". REF. PAGE #2 FOR C.L. GEOM. DETAILS TO EAST LINE OF S.E. 1/4 SECTION.

FIELD BOOK: BHco. #489 p.p. 1-2

PREPARED BY: G.T. & T.K. 1/7/11

(M) = "Measured" Dimension	"NP" = Reflectorless EDM Meas.
(P) = "Platted" Dimension	"MLM" = Indirect Measure
(R) = "Record" Dimension	"CM" = Concrete Monument
(C) = "Calculated" Dimension	"SM" = Survey Marker Spike/Tag
"GS" = Iowa Geodetic Survey	"PK" = PK/MAG Nail Brand Style
"WPA" = Works Progress Admin. Survey	
"Φ" = per George Miller Survey (BfCo Surveyor 1858-1860)	
"S" = per John Ball Survey (BfCo Surveyor 1868-1891)	
"N" = per Nathan Barber Survey (BfCo Surveyor 1908-1931)	

PREPARED BY: BLACK HAWK COUNTY ENGINEERS OFFICE
316 E. FIFTH STREET, ROOM 211 WATERLOO, IOWA 50703

PH.# (319) 833-3008
FAX.# (319) 833-3139

SLSI 9-94
CERT 12-96

UNITED STATES PUBLIC LAND SURVEY CORNER CERTIFICATE OF
Land Survey Monuments situated in Section 03, Township 88 N,
Range 12 W, of the Fifth Principal Meridian, BLACK HAWK County, Iowa.
Previously recorded in FEE Book n/a Page n/a in County Recorder's Office.

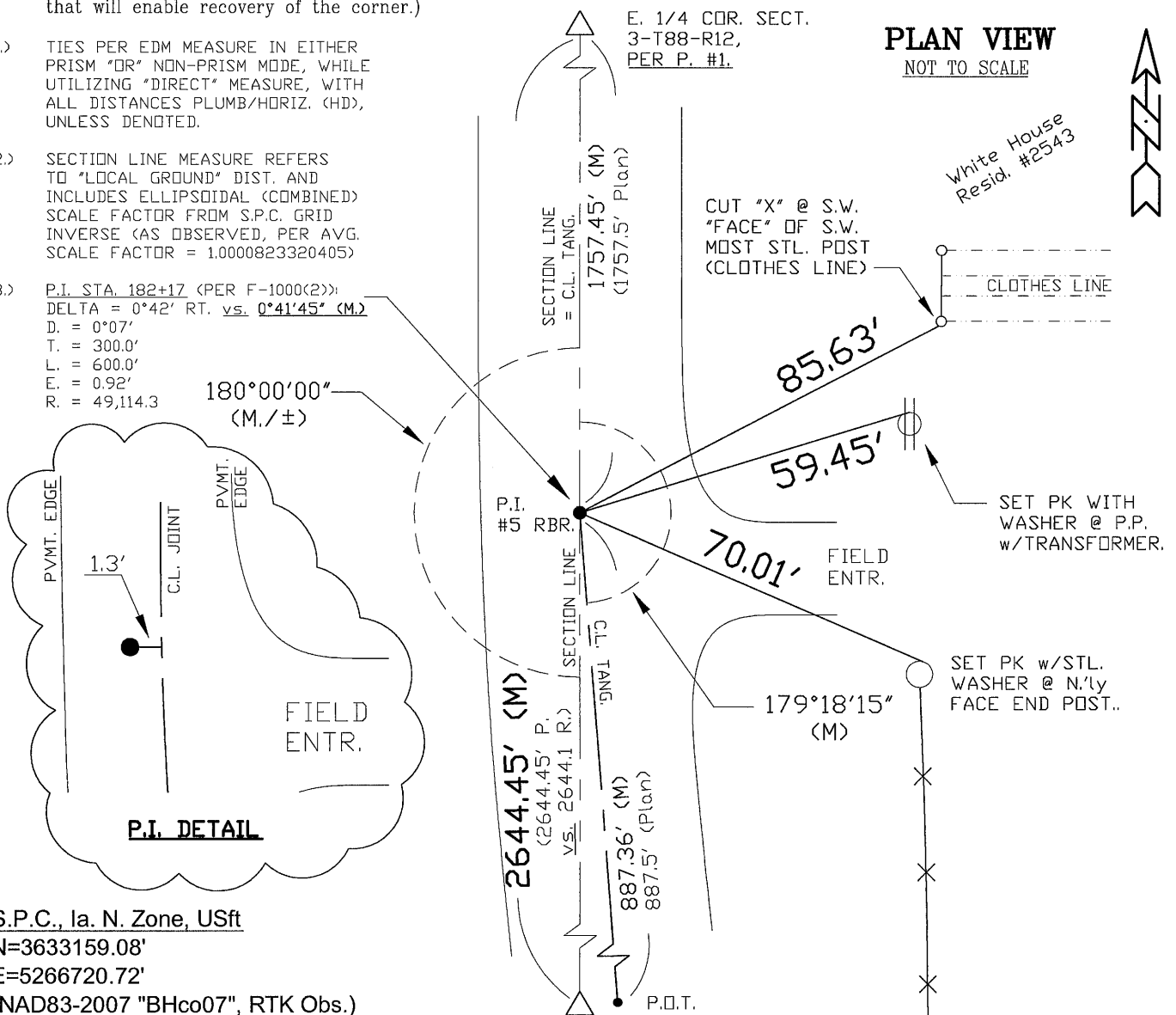
(Show reason for preparing this certificate, the evidence and detailed procedures used in establishing the corner positions and monumentation found or placed.)

Monument Description and Remarks: (CONTINUED: Page #2 of 2)

P.I. STA. 182+17 DETAILS: FOUND HINGE / SMALL NAIL @ 2" DEPTH PRIOR TO 2009 COUNTY H.M.A. RESURFACING PROJECT. AREA SEARCH YEILDED AN INITIAL NAIL @ 2.66' S.E.'ly. (w/OBS. STRING), YET FND. FINAL REF. LOCATION ON E. LINE OF S.E. 1/4 PER HISTORICAL I&DOT PROJ. F-1000(2) AS-BUILTS (DTD. 1959), AS P.I. HEREIN REFERENCED. FND. NAIL WAS TEMP. REF. PER RTK GPS PRIOR TO RESURF. PROJECT, WITH -2" EXIST. ACC MILLED AND +4.5" OF NEW H.M.A. PVMT. ADDED. P.I. RESET WITH STUB #5 REBAR AND TIED FOR GEOM. REFERENCE BEING P.I. DEFL. OF C.L. RD. GEOM. FROM EAST LINE OF S.E. 1/4 SAID SECTION. P.I. LOCATED ±1.3' WEST OF C.L. PVMT. JOINT & ALIGNED (±) WITH N. EDGE FIELD ENTR. TO EAST.

(Show a minimum of three reference ties to durable physical objects, relevant monuments and physical conditions that will enable recovery of the corner.)

- 1.) TIES PER EDM MEASURE IN EITHER PRISM "OR" NON-PRISM MODE, WHILE UTILIZING "DIRECT" MEASURE, WITH ALL DISTANCES PLUMB/HORIZ. (HD), UNLESS DENOTED.
- 2.) SECTION LINE MEASURE REFERS TO "LOCAL GROUND" DIST. AND INCLUDES ELLIPSOIDAL (COMBINED) SCALE FACTOR FROM S.P.C. GRID INVERSE (AS OBSERVED, PER AVG. SCALE FACTOR = 1.0000823320405)
- 3.) P.I. STA. 182+17 (PER F-1000(2))
DELTA = 0°42' RT. vs. 0°41'45" (M.)
D. = 0°07'
T. = 300.0'
L. = 600.0'
E. = 0.92'
R. = 49,114.3



S.P.C., Ia. N. Zone, USft

N=3633159.08'

E=5266720.72'

(NAD83-2007 "BHco07", RTK Obs.)

FIELD SURVEY: G.T. & M.C. & J.D. 6/01/10

PREPARED BY: G.T. & T.K. 1/7/11