

INDEX

BLACK HAWK COUNTY, IOWA:SS

FEE BOOK # 2006 3208

PROOF

FILED FOR RECORD AUG 3

2005, AT 1:00 P.M.

FEE 1-5.00/-1.00/

COMPARED

*Patricia L. Schell*

BLACK HAWK COUNTY RECORDER

ENV

WAYNE CLAASSEN ENGINEERING AND SURVEYING, INC.  
P.O. BOX 898 WATERLOO, IOWA 50704-0898PHONE: (VOICE) 319-235-6294  
(FAX) 319-235-0028

## UNITED STATES PUBLIC LAND SURVEY CORNER CERTIFICATE

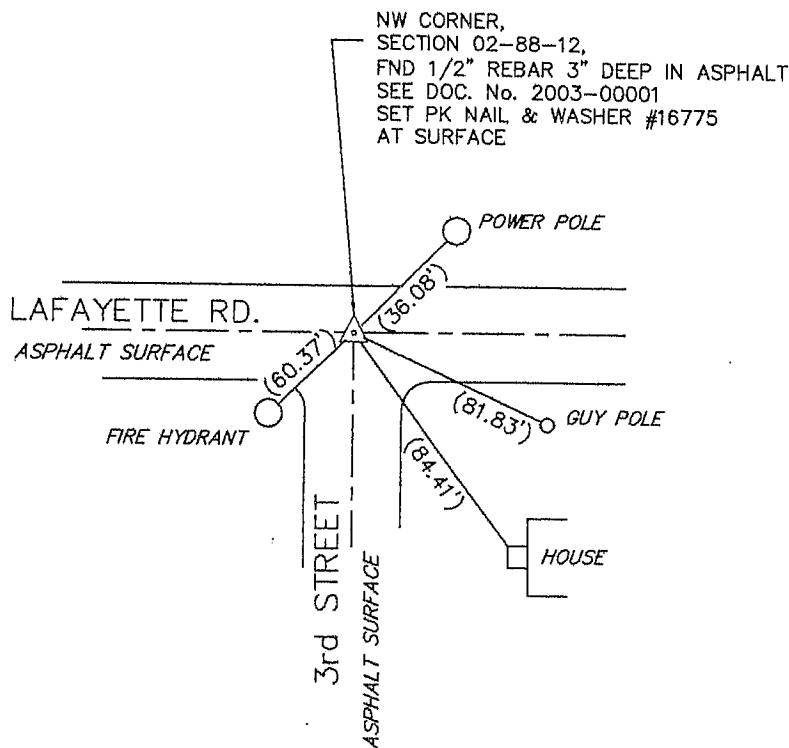
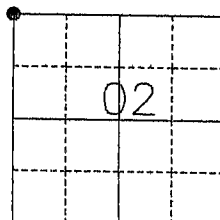
Land Survey Monuments situated in Section 02, Township 88 North, Range 12 West, of the Fifth Principal Meridian, Black Hawk County, Iowa.Previously recorded in DOCUMENT No. 2003-00001 in County Recorder's Office.  
(book, page, document number, etc.)

(Show reason for preparing this certificate, the evidence and detailed procedures used in establishing the corner positions and monumentation found or placed.)

Monument Description and Remarks Set PK nail and Washer #16775 above found 1/2" rebar, at asphalt surface.

## PLAN - VIEW

(Show a minimum of three reference ties to durable physical objects, relevant monuments and physical conditions that will enable recovery of the corner.)



BK. 504-32

I hereby certify that the survey work was completed and this certificate was prepared by me or under my direct personal supervision and that I am a duly licensed land surveyor under the laws of the state of Iowa.

Signature: *David L. Schell*  
David L. Schell, L.S.Date: July 27, 2005 Lic. No. 16775

My license renewal date is December 31, 2006

SEAL

## List Corners to be Indexed

Corners	Section	Twp	Range
NW. CORNER,	02	88 N	12 W

