



Doc ID: 007561160001 Type: GEN  
Recorded: 02/22/2017 at 10:35:34 AM  
Fee Amt: \$7.00 Page 1 of 1  
Black Hawk County Iowa  
SANDIE L. SMITH RECORDER

File **2017-00014821**

Michael R. Fagle, P.L.S.

AECOM, 501 Sycamore St., Suite 222, Waterloo, Iowa 50703

I-319-232-6531

UNITED STATES PUBLIC LAND SURVEY CORNER CERTIFICATE  
OF

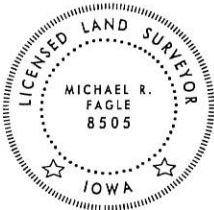
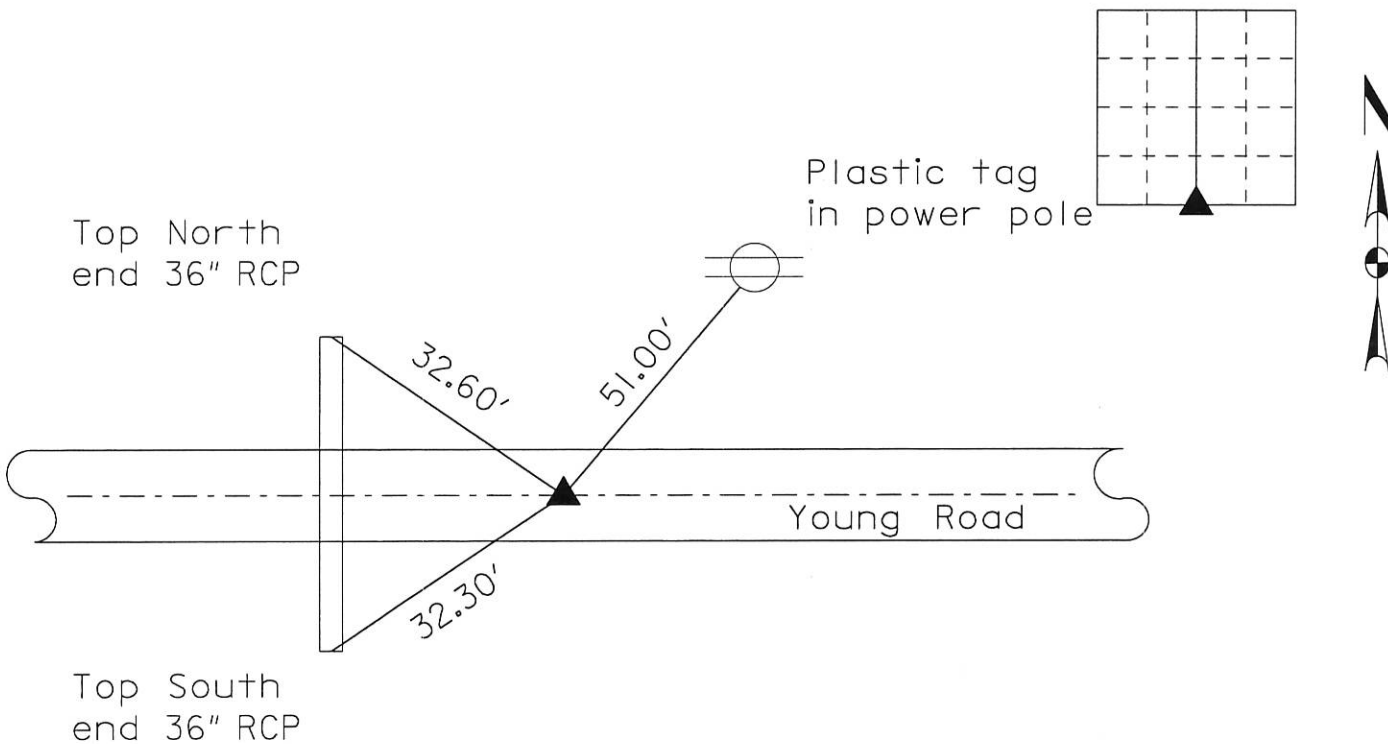
Land Survey Monuments situated in Section 1, Township 88 North,  
Range 12 West, of the Fifth Principal Meridian, Black Hawk  
County, Iowa. Previously recorded in See Monument Description and Remarks.  
in County Recorder's Office. (Book, Page, Document Number, etc.)

(Show reason for preparing this certificate, the evidence and detailed procedures used in establishing the corner positions and monumentation found or placed.)

Monument Description and Remarks: Found bent 5/8" rebar over SCM. Reset 1/2" rebar 4" deep with yellow cap No. 8505 and retied. Existing ties are from corner stone survey made for the Iowa DOT Black Hawk County interstate No. 380 and 520 I-380-7(31)304--01-07 and FN-520-6(4)--21-07 Projects.

PLAN - VIEW

(Show a minimum of three reference ties to durable physical objects, relevant monuments and physical conditions that will enable recovery of the corner.)



I hereby certify that this Land Surveying document was prepared by me or under my direct personal supervision and that I am a duly Licensed Land Surveyor under the laws of the State of Iowa.  
Michael R. Fagle 2-15-2017  
MICHAEL R. FAGLE Date  
License number 8505  
My license renewal date is December 31, 2018  
Pages or sheets covered by this seal:  
THIS SHEET

List Corners to be Indexed

Corners	Section	Twp	Range
South Corner	1	T 88 N	R 12 W