

PREPARED BY: BLACK HAWK COUNTY ENGINEERS OFFICE  
316 E. FIFTH STREET, ROOM 211 WATERLOO, IOWA 50703

PH.# (319) 833-3008  
FAX# (319) 833-3139  
SLSI 9-94  
BHCO 03-09

UNITED STATES PUBLIC LAND SURVEY CORNER CERTIFICATE OF  
Land Survey Monuments situated in Section 01, Township 88 N,  
Range 12 W, of the Fifth Principal Meridian, BLACK HAWK County, Iowa.  
Previously recorded in FEE Book N/A Page N/A in County Recorder's Office.

(Show reason for preparing this certificate): The corner monument has been Replaced or Modified, per Ia. Code 355.11(1)(c)

(Evidence and detailed procedures used in establishing the corner position(s) and monumentation found or placed.)

Monument Description and Remarks: N. 1/4 COR. FOUND 2 1/2" Ø I.D.O.T. ALUM. CAP  
STABLE IN ACC CORE HOLE (±5" Dp. ACC OVERLAYED PCC PAVEMENT), WITH "NO"  
CURRENT COR. CERT. ON RECORD. DOWN ±5" Dp. TO PCC PVM'T., & FOUND LEAD PLUG IS  
PCC SLAB. TEMP. REF. CORNER w/RTK GPS (TWO LINE w/WT. AVG.), AND MILLED 2"  
EXIST. ACC OVERLAY & ADDED 5" H.M.A. OVERLAY. 1955 IA. D.O.T. PAVING PLANS  
DETAILED FOR HISTORICAL REFERENCE. CORNER RESET WITH #5 (5/8") x ±7" L. REBAR  
PER RTK GPS REF., AND RETIED FOR RECORD. CORNER LOCATED ±1.67' SOUTH OF NEW C.L.  
PAVING JOINT. CORNER LOCATION ALSO CALC.'S AT "1.34' NORTH" FROM CALC.'ED TRUE  
CORNER (CLOSING) ONTO SOUTH LINE OF S.W. FRACTIONAL 1/4 FOR SECTION 31-T89-R11,  
AS OBSERVED.

NOTE: ALL DISTANCES PLUMB/HORIZ.  
(H.D.), "UNLESS DENOTED".

### PLAN VIEW

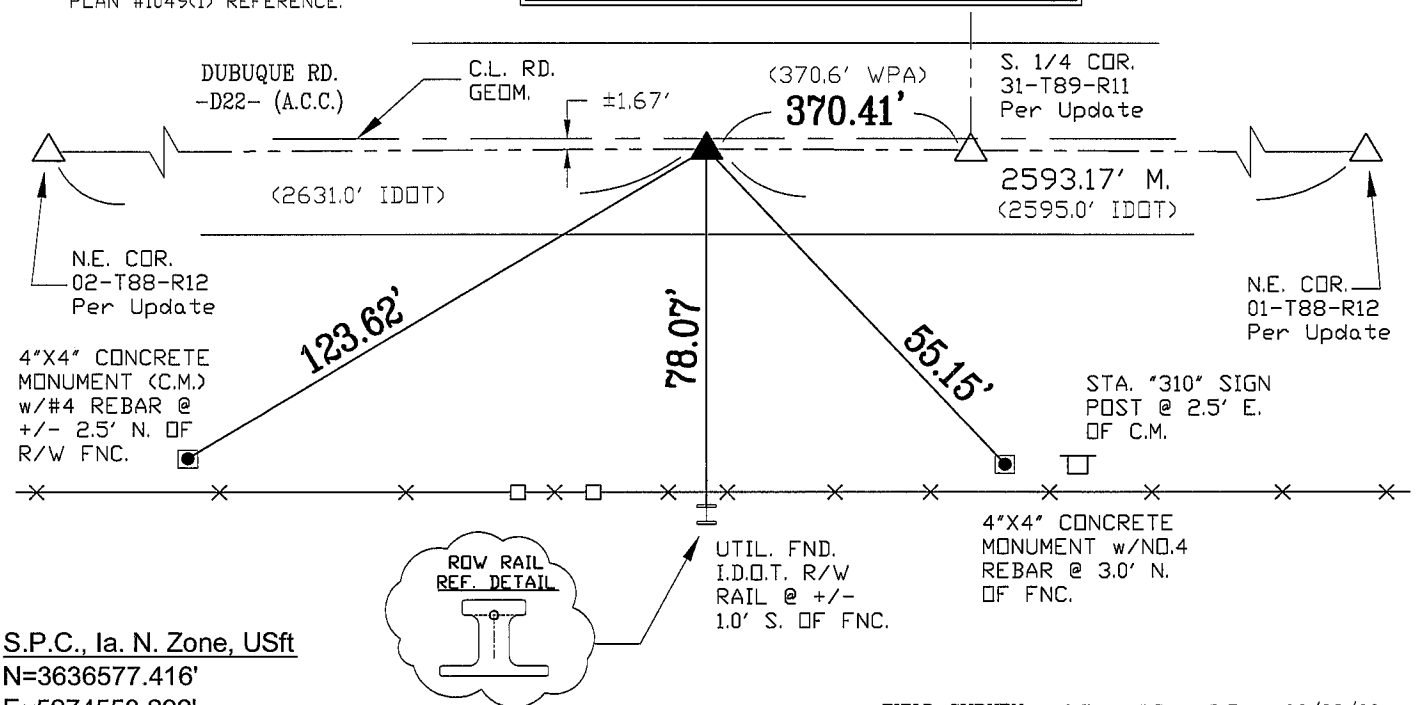
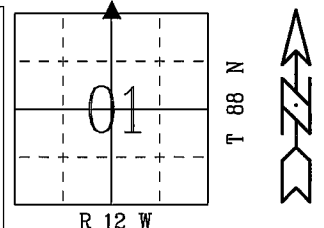
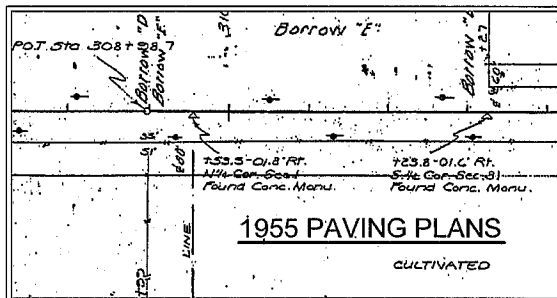
BHco Hist. Ties: BK. #1001 p.01 88-12

FIELD BOOK: BHco. #488 p.45 (#1002)

"NOT TO SCALE"

(Show a minimum of three reference ties to durable physical objects, relevant monuments and physical conditions that will enable recovery of the corner.)

- 1.) TIES PER EDM MEASURE IN PRISM MODE, WHILE UTILIZING "INDIRECT" MEASURE.
- 2.) SECTION LINE MEASURE REFERS TO "LOCAL GROUND" DIST. AND INCLUDES ELLIPSOIDAL (COMBINED) SCALE FACTOR FROM S.P.C. GRID INVERSE (AS OBSERVED, PER AVG. SCALE FACTOR = 1.0000892480663)
- 3.) IDOT = (IA. D.O.T.) 1955 PAVING PLAN #1049(1) REFERENCE.



S.P.C., Ia. N. Zone, USft

N=3636577.416'

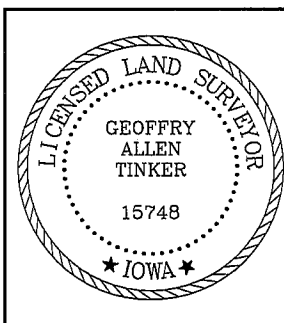
E=5274553.292'

(NAD83-2007 "BHco07", RTK Obs.)

FIELD SURVEY: G.T. & J.Z. & D.B. 06/23/09

PREPARED BY: G.T. & J.Z. & D.B. 9/10/09

### CERTIFICATION



I hereby certify that this land surveying document was prepared and the related survey work was performed by me or under my direct personal supervision and that I am a duly licensed Land Surveyor under the laws of the State of Iowa.

*Geoffry Allen Tinker* 09/23/2009  
Geoffry Allen Tinker (date)

License Number 15748

My license renewal date is December 31, 2010

Pages or sheets covered by this seal:

This Land Corner Certificate Only.

### LIST CORNERS TO BE INDEXED

Corner	Section -	Township -	Range
N. 1/4 Cor.	01	88 N	12 W

### INDEX OF ABBREVIATIONS

(M) = "Measured" Dimension	"NP" = Reflectorless EDM Meas.
(P) = "Platted" Dimension	"MLM" = Indirect Measure
(R) = "Record" Dimension	"CM" = Concrete Monument
(C) = "Calculated" Dimension	"SM" = Survey Marker Spike/Tag
"IGS" = Iowa Geodetic Survey	"PK" = PK/MAG Nail Brand Style
"WPA" = Works Progress Admin. Survey	
"g" = per George Miller Survey (BHco Surveyor 1858-1860)	
"b" = per John Ball Survey (BHco Surveyor 1866-1891)	
"N" = per Nathan Barber Survey (BHco Surveyor 1908-1931)	