



Doc ID: 007561150001 Type: GEN
Recorded: 02/22/2017 at 10:35:30 AM
Fee Amt: \$7.00 Page 1 of 1
Black Hawk County Iowa
SANDIE L. SMITH RECORDER

File 2017-00014820

Michael R. Fagle, P.L.S. AECOM, 501 Sycamore St., Suite 222, Waterloo, Iowa 50703 1-319-232-6531

UNITED STATES PUBLIC LAND SURVEY CORNER CERTIFICATE
OF

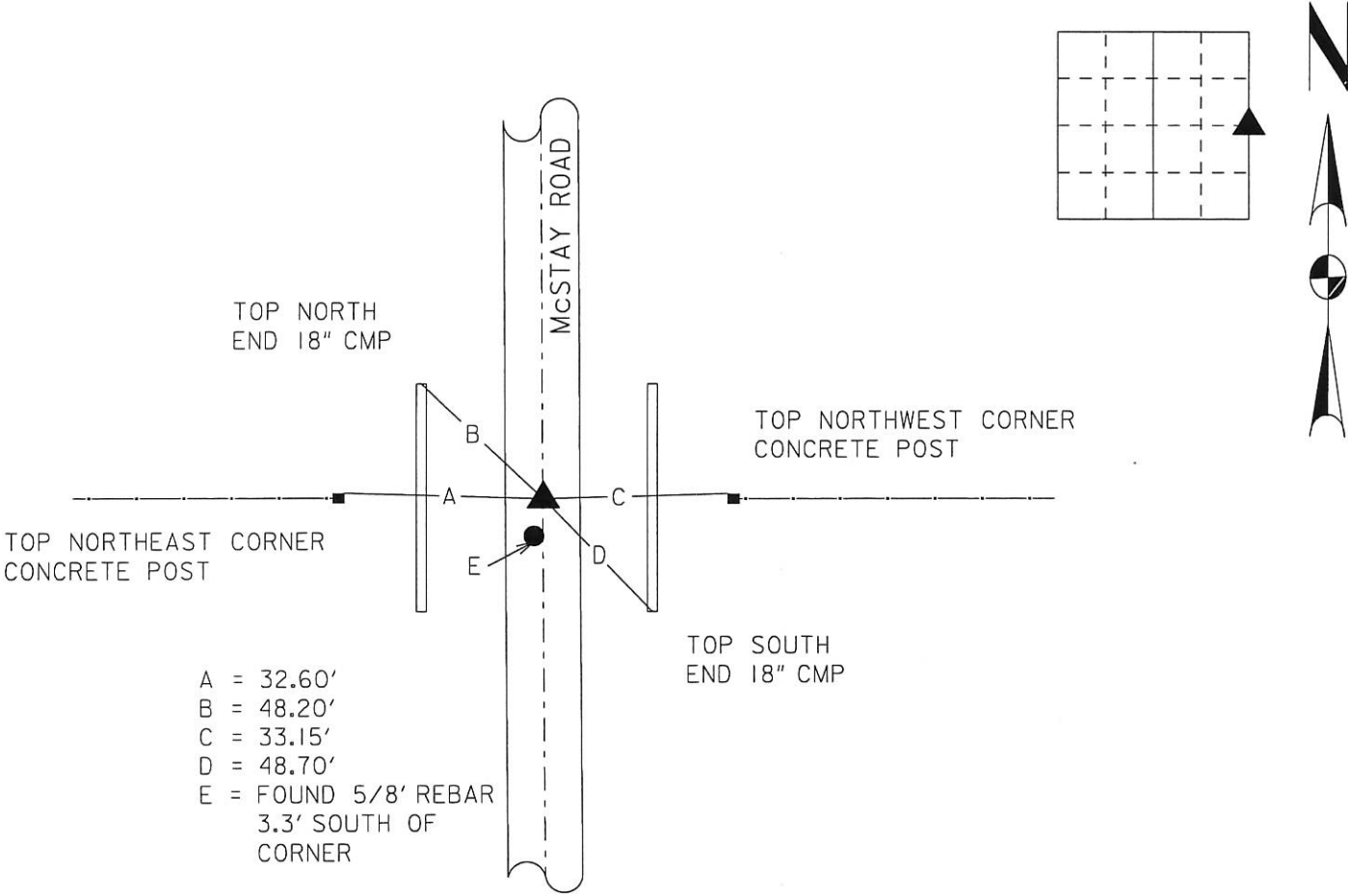
Land Survey Monuments situated in Section 1, Township 88 North,
Range 12 West, of the Fifth Principal Meridian, Black Hawk
County, Iowa. Previously recorded in MISC. BOOK 296, PAGE 129
in County Recorder's Office. (Book, Page, Document Number, etc.)

(Show reason for preparing this certificate, the evidence and detailed procedures used in establishing the corner positions and monumentation found or placed.)

Monument Description and Remarks: Found 3/4" X 3/4" Square Bar 15" Deep,
also found 5/8" rebar 3.3" South of corner.

PLAN - VIEW

(Show a minimum of three reference ties to durable physical objects, relevant monuments and physical conditions that will enable recovery of the corner.)



	<p>I hereby certify that this Land Surveying document was prepared by me or under my direct personal supervision and that I am a duly Licensed Land Surveyor under the laws of the State of Iowa.</p> <p><u>Michael R. Fagle</u> <u>2-15-2017</u> MICHAEL R. FAGLE Date</p> <p>License number 8505</p> <p>My license renewal date is December 31, 2018</p> <p>Pages or sheets covered by this seal: <u>THIS SHEET</u></p>	<p>List Corners to be Indexed</p> <table border="1"><thead><tr><th>Corners</th><th>Section</th><th>Twp</th><th>Range</th></tr></thead><tbody><tr><td>EAST Corner</td><td>1</td><td>T 88 N</td><td>R 12 W</td></tr></tbody></table>			Corners	Section	Twp	Range	EAST Corner	1	T 88 N	R 12 W
	Corners	Section	Twp	Range								
EAST Corner	1	T 88 N	R 12 W									