

Done

SLSI 9-90

UNITED STATES PUBLIC LAND SURVEY CORNER CERTIFICATE

OF

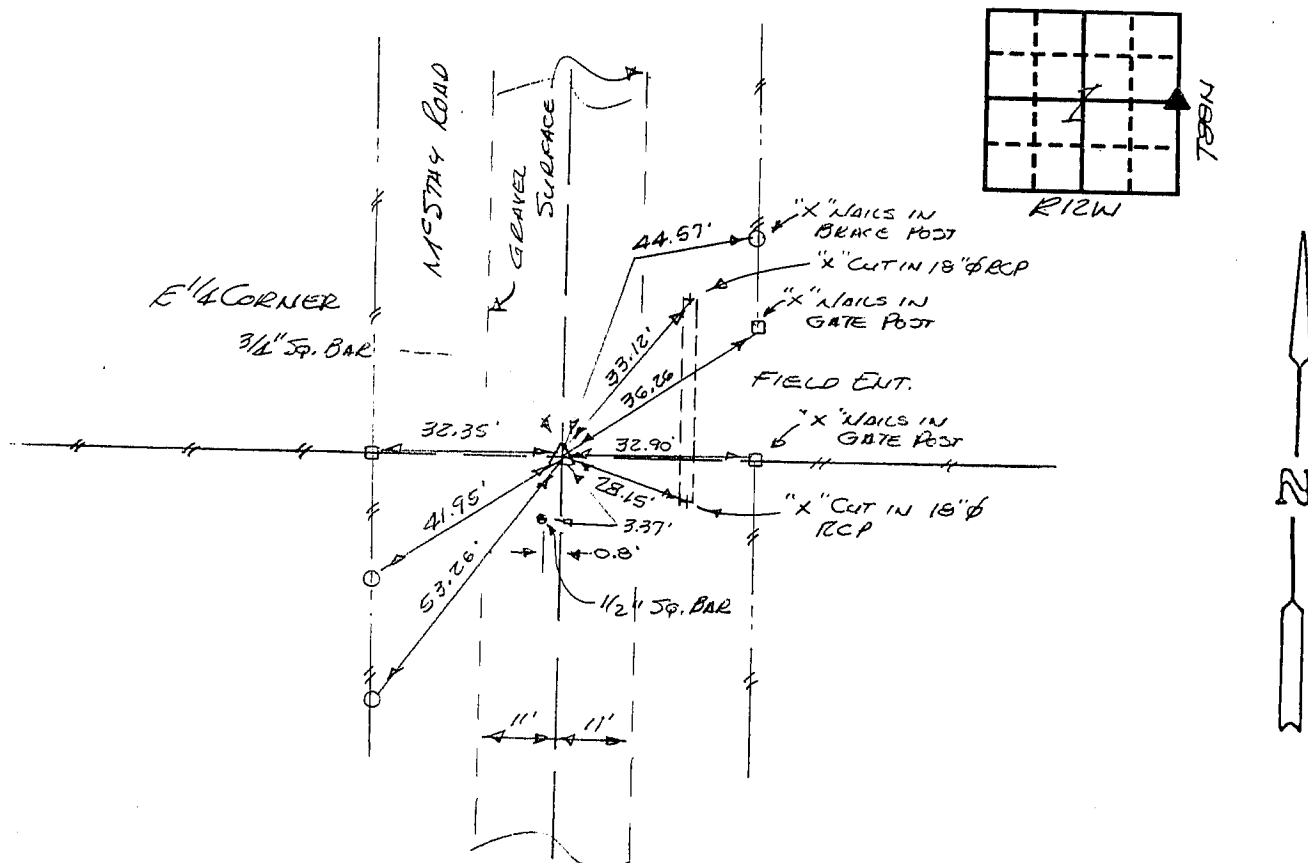
Land Survey Monuments situated in Section 1, Township 88N, Range 12W, of the Fifth Principal Meridian, BLACK HAWK County, Iowa.
Previously recorded in N/A (book, page, document number, etc.) in County Recorder's Office.

(Show reason for preparing this certificate, the evidence and detailed procedures used in establishing the corner positions and monumentation found or placed.)

Monument Description and Remarks: FOUND 3/4" SQUARE BAR. 15" DEEP IN GRAVEL ROAD
USING COUNTRY TIES OF 1972. ALSO FOUND 1/2" SQUARE BAR 3.37' SW OF
3/4" BAR.

PLAN - VIEW

(Show a minimum of three reference ties to durable physical objects, relevant monuments and physical conditions that will enable recovery of the corner.)



I hereby certify that the survey work was completed and this certificate was prepared by me or under my direct personal supervision and that I am a duly registered land surveyor under the laws of the state of Iowa.

Signature: F. William King
Name typed or printed: F. WILLIAM KING
Date: 5-24-1991 Reg. No. 8033

Corners	List Corners to be Indexed	Section	Twp	Range
E 1/4	1	88N	12W	



MISC. BK. 296 p. 129