

N.E. COR.

Sect. 13-88-11

"NOT" recorded ~~to~~ w/  
B.H. Co. Recorder

DEC 26 '02 09:57AM CRAWFORD ENGINEERING

DANIEL T. CRAWFORD P.E. & L.S. Crawford Engineering & Surveying, Inc., Independence, Iowa 319/334-7077

UNITED STATES PUBLIC LAND SURVEY CORNER CERTIFICATE  
OF

Land Survey Monuments situated in Section 18 Township 88 North Range  
10 West of the Fifth Principal Meridian, Buchanan County, Iowa.

Previously recorded in N/A in County Recorder's Office.

Monument Description and Remarks:

Reason for preparing certificate: Current certificate not on file.

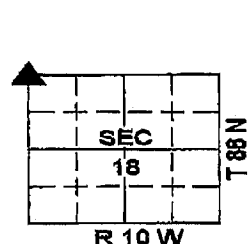
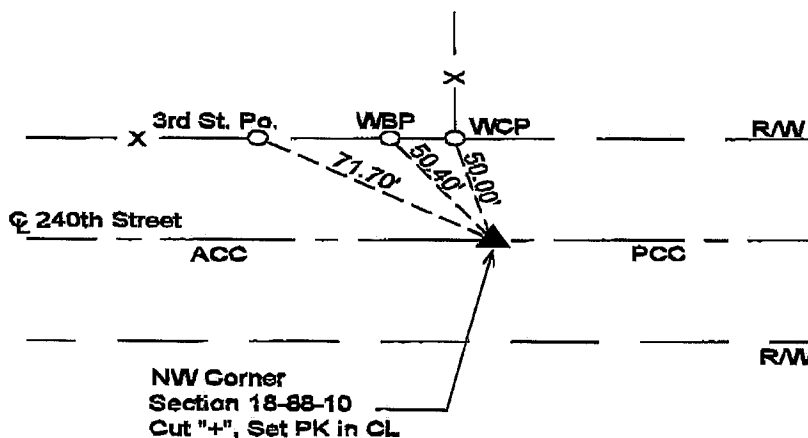
Evidence and detailed procedure used to establish corner position: Corner position determined from highway plans.

Monumentation found or placed: Placed P-K nail and cut "+" in PCC Pavement

Extent of search for monument: Monument likely obliterated when PCC pavement was placed.

PLAN-VIEW

(Show a minimum of three reference ties to durable physical objects, relevant monuments and physical conditions that will enable recovery of the corner).



I hereby certify that the survey work was completed and this land surveying document was prepared by me or under my direct personal supervision and that I am a duly licensed land surveyor under the laws of the State of Iowa.

Signature: Daniel T. Crawford

DANIEL T. CRAWFORD P.E. & L.S.

Date: 12-20-02 Reg. No. 8812

My license renewal date is December 31, 2003

Corners	Section	Twp.	Range
NW Corner	18	88 N	10 W

SEAL

