

UNITED STATES PUBLIC LAND SURVEY CORNER CERTIFICATE

OF

Land Survey Monuments situated in Section 7, Township 88 N, Range 10 W, of the Fifth Principal Meridian, Buchanan County, Iowa  
Previously recorded in Book N/A, Page . \*Black Hawk

Show reason for preparing this certificate, the evidence and detailed procedures used in establishing the corner positions and monumentation found or placed.)

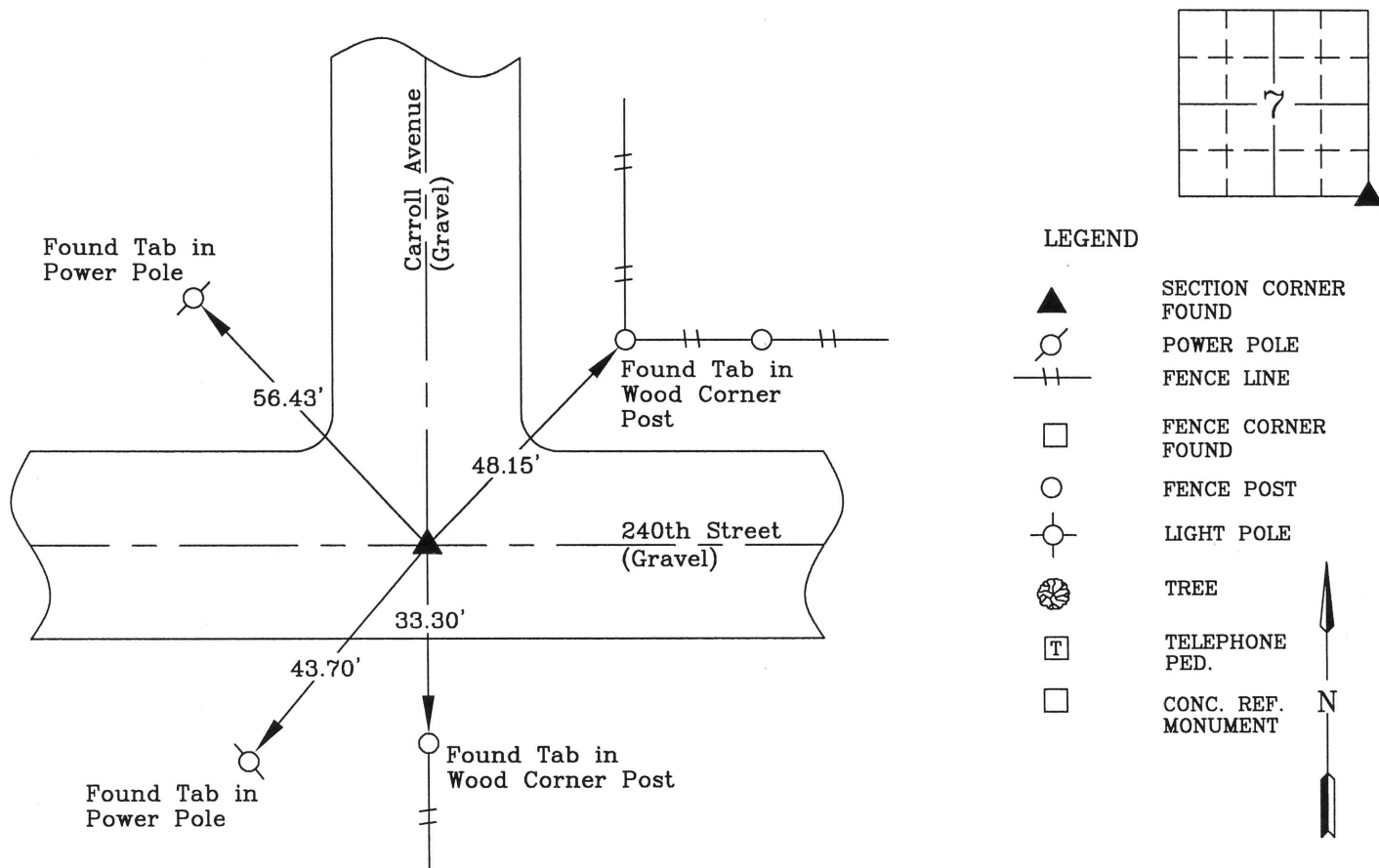
Monument Description and Remarks: Corner was used for a survey in the SE 1/4 of 7-88-10.

Searched area with metal locator, found Concrete Monument with 1/2"Ø Rebar per County Engineer Record Ties. The top of Rebar was bent over, cut notch at center of Rebar and used as location.

No previous corner certificate on file.

PLAN - VIEW

(Show a minimum of three reference ties to durable physical objects, relevant monuments and physical conditions recovery of the corner.)



I hereby certify that this land surveying document was prepared and the related survey work was performed by me or under my direct personal supervision and that I am a duly licensed Land Surveyor under the laws of the State of Iowa.



Wendell J. Lupkes 6-6-13  
WENDELL J. LUPKES, L.S. DATE  
License number 12088  
My license renewal date is December 31, 2014  
Pages or sheets covered by this seal: 1

List Corner to be Indexed

Corner	Section	Twp	Range
SE Corner	7	88 N	10 W



**VJ Engineering**  
1501 Technology Parkway  
Cedar Falls, Iowa - 319-266-5829

SECTION CORNER  
REFERENCE TIES

scale  
NONE  
drawn by  
MAK  
date  
6/4/13