

UNITED STATES PUBLIC LAND SURVEY CORNER CERTIFICATE
OF

Land Survey Monuments situated in Section 36, Township 88 N, Range 11 W, of the Fifth Principal Meridian, Black Hawk County, Iowa
Previously recorded in Book N/A, Page .

Show reason for preparing this certificate, the evidence and detailed procedures used in establishing the corner positions and monumentation found or placed.)

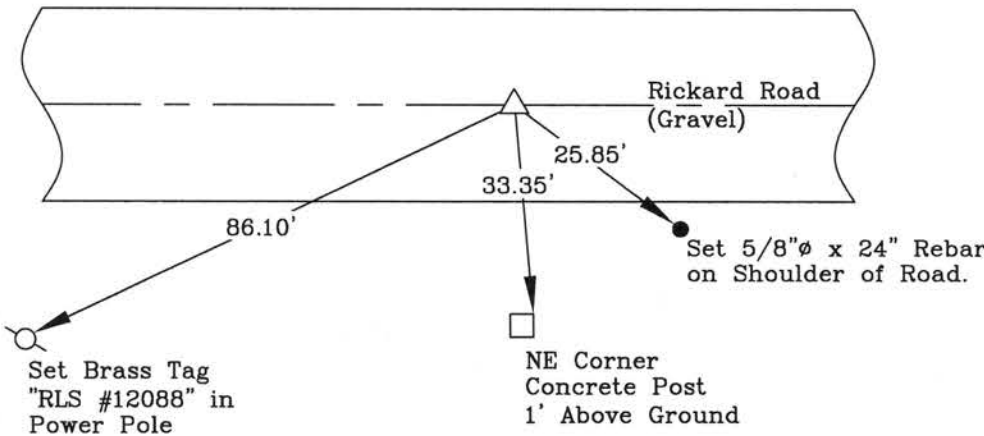
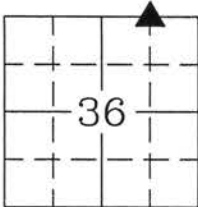
Monument Description and Remarks: Corner was used for a survey in the NE 1/4 of 36-88-11.

Set 5/8"Ø x 24" Rebar with 1½"Ø Aluminum Cap L.S. #12088 at the midpoint between the
NW Corner NE 1/4 and the NE Corner NE 1/4.

No previous corner certificate on file.

PLAN - VIEW

(Show a minimum of three reference ties to durable physical objects, relevant monuments and physical conditions recovery of the corner.)



LEGEND

- △ SECTION CORNER SET
- SET MONUMENT
- ⊙ POWER POLE
- +— FENCE LINE
- FENCE CORNER FOUND
- FENCE POST
- ⊙ LIGHT POLE
- ⊙ TREE
- ⊙ TELEPHONE PED.
- CONC. REF. MONUMENT

I hereby certify that this land surveying document was prepared and the related survey work was performed by me or under my direct personal supervision and that I am a duly licensed Land Surveyor under the laws of the State of Iowa.



Wendell J. Lupkes 6-6-13
WENDELL J. LUPKES, L.S. DATE
License number 12088
My license renewal date is December 31, 2014
Pages or sheets covered by this seal: 1

List Corner to be Indexed

Corner	Section	Twp	Range
NW Corner	36	88 N	11 W
NE 1/4			
NE 1/4			



VJ Engineering
1501 Technology Parkway
Cedar Falls, Iowa - 319-266-5829

SECTION CORNER
REFERENCE TIES

scale
NONE
drawn by
MAK
date
6/4/13