

BLACK HAWK COUNTY ENGINEER

PREPARED BY: BLACK HAWK COUNTY ENGINEERS OFFICE
316 E. FIFTH STREET, ROOM 211 WATERLOO, IOWA 50703PH.# (319) 833-3008
FAX.# (319) 833-3139SLSI 9-94
CERT 12-96

UNITED STATES PUBLIC LAND SURVEY CORNER CERTIFICATE OF
Land Survey Monuments situated in Section 34, Township 88 N,
Range 11 W, of the Fifth Principal Meridian, BLACK HAWK County, Iowa.
Previously recorded in Fee Book 2004, Page 13170, in County Recorder's Office.

(Show reason for preparing this certificate, the evidence and detailed procedures used in establishing the corner positions and monumentation found or placed.)

Monument Description and Remarks: FOUND 1/2" REBAR PRIOR TO RE-SURF,
LOCATED 3.3' EAST OF C.L. ACC PAVEMENT, w/ NEW 4.5" ACC MAT OVERLAY,
CORNER TEMP. REFERENCED, AND RESET w/ #5 REBAR LOCATED AS DENOTED.
ADDITIONAL REF. TIES PER CO. ENG. (FIELD) BK. #1000, DATED 6/10/83.
RECORD CLOSING CORNER DISTANCE E/W @ 15.32' PER PLS #6505 & @ 15.18'
PER WPA NOTES OF 7/15/1941. CORNER FILED TO UPDATE EXISTING RECORD.
P.I. REFERENCE DENOTED FROM COUNTY PLAN FILE RECORD, & WAS "NOT" SET.

(Show a minimum of three reference ties to durable physical objects, relevant monuments and physical conditions that will enable recovery of the corner.)

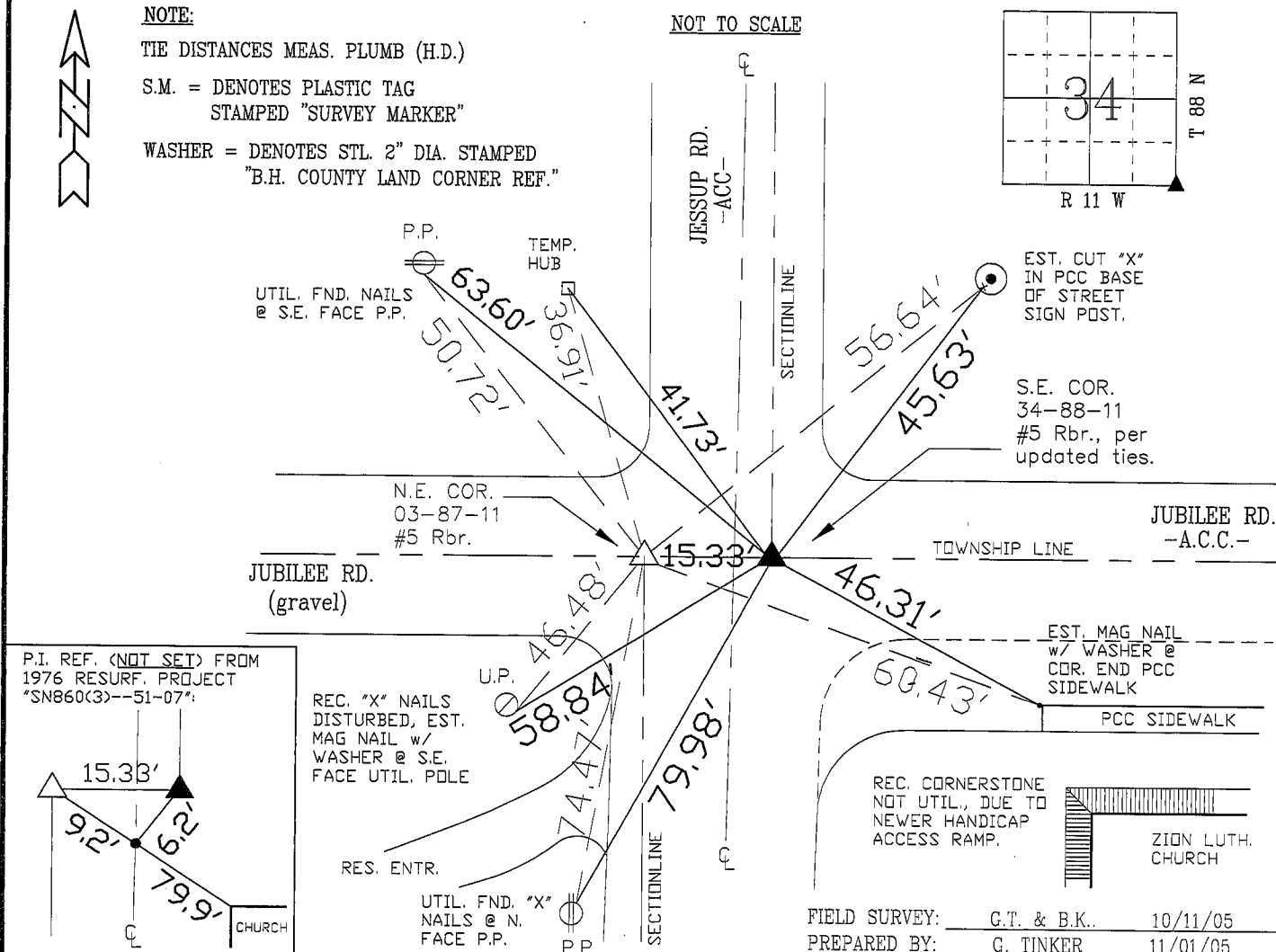
PLAN - VIEW

NOTE:

TIE DISTANCES MEAS. PLUMB (H.D.)

S.M. = DENOTES PLASTIC TAG
STAMPED "SURVEY MARKER"WASHER = DENOTES STL. 2" DIA. STAMPED
"B.H. COUNTY LAND CORNER REF."

NOT TO SCALE



CERTIFICATION

I hereby certify that this land surveying document was prepared and the related surveying work was performed by me or under my direct personal supervision and that I am a duly licensed Land Surveyor under the laws of the State of Iowa.

Richard L. King
License Number 3890

My license renewal date is December 31, 2005

Pages or sheets covered by this seal:

This Land Corner Certificate Only.

LIST CORNERS TO BE INDEXED

Corner	Section	Township	Range
S.E. COR.	34	88 N	11 W
S.W. COR.	35	88 N	11 W

