

PROOF FILED FOR RECORD NOV 22, 2005, AT 4:00 P.M. FEE N/C

COMPARED

BLACK HAWK COUNTY RECORDER

BLACK HAWK COUNTY ENGINEER

PREPARED BY: BLACK HAWK COUNTY ENGINEERS OFFICE
316 E. FIFTH STREET, ROOM 211 WATERLOO, IOWA 50703PH.# (319) 833-3008
FAX# (319) 833-3139SLSI 9-94
CERT 12-96

UNITED STATES PUBLIC LAND SURVEY CORNER CERTIFICATE OF
Land Survey Monuments situated in Section 34, Township 88 N,
Range 11 W, of the Fifth Principal Meridian, BLACK HAWK County, Iowa.
Previously recorded in Misc. Book 346, Page 605, in County Recorder's Office.

(Show reason for preparing this certificate, the evidence and detailed procedures used in establishing the corner positions and monumentation found or placed.)

Monument Description and Remarks: FND. 1/2" REBAR PRIOR TO RE-SURF.
w/ NEW 4.5" ACC MAT OVERLAY.

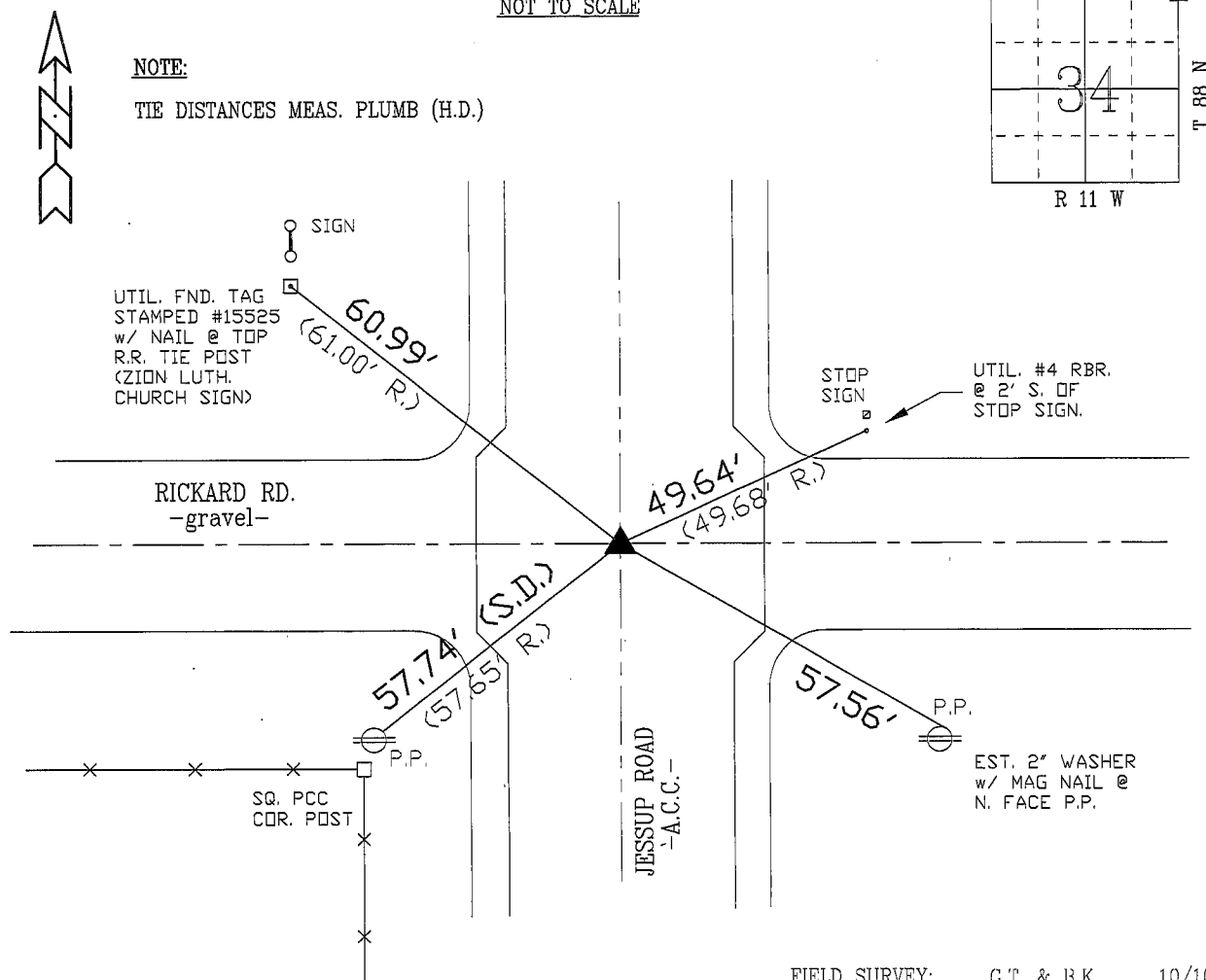
CORNER TEMP. REFERENCED, AND RESET w/ #5 REBAR LOCATED AS DENOTED
& LOCATED 0.40' E. OF C.L. ACC JOINT AND ALIGNED w/ C.L. S.R. E/W.

ADDITIONAL REF. TIES PER CD. ENGINEERS (FIELD) BK. #1001 (ASSUME 1976),
ARE NOT SHOWN. CORNER UPDATED FROM EXISTING RECORD, PER PLS #15525

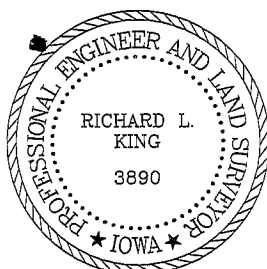
PLAN - VIEW

(Show a minimum of three reference ties to durable physical objects, relevant monuments and physical conditions that will enable recovery of the corner.)

NOT TO SCALE

FIELD SURVEY: G.T. & B.K. 10/10/05
PREPARED BY: G. TINKER 10/21/05

CERTIFICATION



I hereby certify that this land surveying document was prepared and the related survey work was performed by me or under my direct personal supervision and that I am a duly licensed Land Surveyor under the laws of the State of Iowa.

Richard L. King (date) 10/16/05
License Number 3890

My license renewal date is December 31, 2005

Pages or sheets covered by this seal:

This Land Corner Certificate Only.

LIST CORNERS TO BE INDEXED

Corner	Section	Township	Range
N.E. COR.	34	88 N	11 W
N.W. COR.	35	88 N	11 W
S.E. COR.	27	88 N	11 W
S.W. COR.	26	88 N	11 W