

Jeffrey P. Helland, 1107 Technology Parkway, Cedar Falls, Iowa 50613-6951, (319)-266-0161

# UNITED STATES PUBLIC LAND SURVEY CORNER CERTIFICATE OF

LAND SURVEY MONUMENTS SITUATED IN SECTION NO. 33, TOWNSHIP NO. 88 NORTH, RANGE NO. 11 WEST OF THE FIFTH PRINCIPAL MERIDIAN, BLACK HAWK COUNTY, IOWA.  
PREVIOUSLY RECORDED IN BOOK 333 PAGE 22.

(SHOW REASON FOR PREPARING THIS CERTIFICATE, THE EVIDENCE AND DETAILED PROCEDURES USED IN ESTABLISHING THE CORNER POSITIONS AND MONUMENTATION FOUND OR PLACED.)

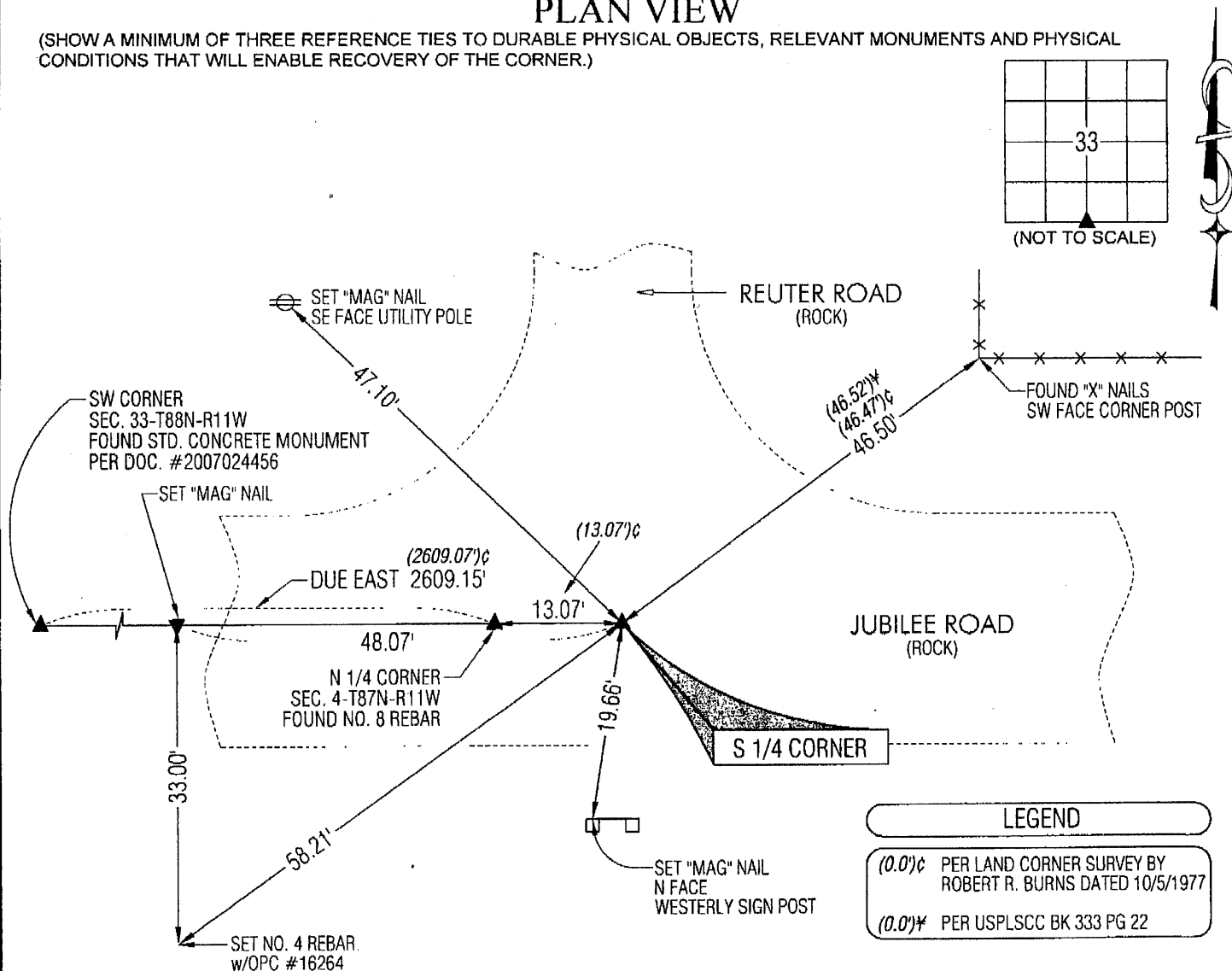
## MONUMENT DESCRIPTION AND REMARKS:

USPLSCC BOOK 333 PAGE 22 REFERENCE TIES HAVE CHANGED. SURVEY COMPLETED IN THE NW FRL 1/4 OF SEC. 4-T87N-R11W.

→ S 1/4 CORNER: LAND CORNER SURVEY BY ROBERT R. BURNS DATED 10/5/1977 CALLS FOR [FOUND CONCRETE MONUMENT 18" DEEP, SET IRON PIN OVER.]. USPLSCC BOOK 333 PAGE 22 DATED 10/15/1998 CALLS FOR [FND 1/2" SQUARE IRON PIN]. FOUND 1/2" SQUARE IRON TWIST PIN (0.2'± DEEP) CORRESPONDING TO TWO REMAINING TIES. CORNER IS IN APPROXIMATE CENTER LINES OF REUTER ROAD AND JUBILEE ROAD.

## PLAN VIEW

(SHOW A MINIMUM OF THREE REFERENCE TIES TO DURABLE PHYSICAL OBJECTS, RELEVANT MONUMENTS AND PHYSICAL CONDITIONS THAT WILL ENABLE RECOVERY OF THE CORNER.)

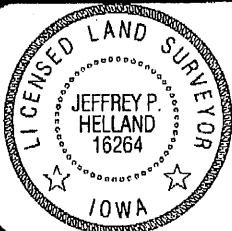


(BEARINGS ARE ASSUMED)



HELLAND ENGINEERING & SURVEYING, LTD.  
1107 Technology Parkway  
Cedar Falls, Iowa 50613-6951  
(319)-266-0161

SHINER = 8D NAIL & 1 5/16"Ø METAL SHINER  
BRASS TAG = 8D NAIL & 13/16"Ø BRASS TAG  
OPC = PLASTIC CAP (O=ORANGE, R=RED, Y=YELLOW)  
(00') RECORDED AS FILE NAME: 11-117C2.DWG



I hereby certify that this land surveying document was prepared and the related survey work was performed by me or under my direct personal supervision and that I am a duly licensed Land Surveyor under the laws of the State of Iowa.  
Jeffrey P. Helland 2/16/11  
Jeffrey P. Helland  
License Number 16264  
My license renewal date is December 31, 2011.  
All pages or sheets are covered by this seal except:

LIST CORNERS TO BE INDEXED			
CORNER	SECTION	TOWNSHIP	RANGE
S 1/4 CORNER	33	88N	11W