

Paul H. Helland, 1107 Technology Parkway, Cedar Falls, Iowa 50613-6951, (319)-266-0161

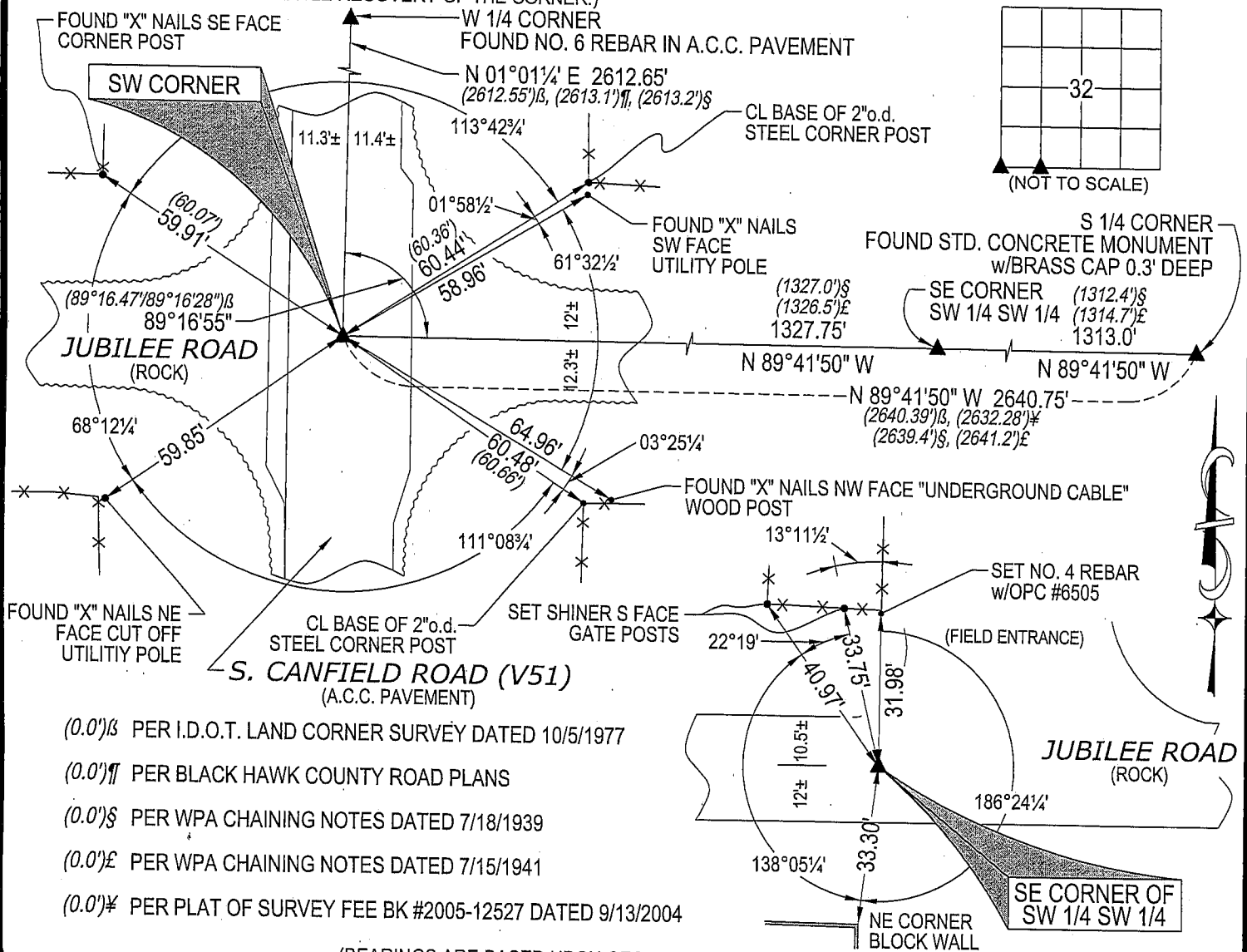
UNITED STATES PUBLIC LAND SURVEY CORNER CERTIFICATE
OFLAND SURVEY MONUMENTS SITUATED IN SECTION NO. 32, TOWNSHIP NO. 88 NORTH, RANGE
NO. 11 WEST OF THE FIFTH PRINCIPAL MERIDIAN, BLACK HAWK COUNTY, IOWA.
PREVIOUSLY RECORDED IN N/A(SHOW REASON FOR PREPARING THIS CERTIFICATE, THE EVIDENCE AND DETAILED PROCEDURES USED IN ESTABLISHING THE
CORNER POSITIONS AND MONUMENTATION FOUND OR PLACED.)

MONUMENT DESCRIPTION AND REMARKS:

NO USPLSCC ON FILE. SURVEY COMPLETED IN THE SE 1/4 OF THE SW 1/4 SEC. 32-T88N-R11W.

→ **SW CORNER:** BLACK HAWK COUNTY ENGINEER REFERENCE TIES DATED 7/18/39 CALL FOR [FOUND IRON BAR
1/2" x 24" LONG. SET C.M. 12" DEEP]. W.P.A. CHAINING NOTES DATED 7/15/41 CALL FOR [S.C.M.]. I.D.O.T. LAND
CORNER SURVEY DATED 10/5/1977 CALL FOR [FOUND IRON PIN IN ASPHALT]. FOUND NO. 6 REBAR IN A.C.C.
PAVEMENT.→ **SE CORNER SW 1/4 SW 1/4:** NO BLACK HAWK COUNTY ENGINEER REFERENCE TIES AVAILABLE. SET NO. 4
REBAR ON LINE BETWEEN THE SW CORNER AND THE S 1/4 CORNER AND IN LINE WITH THE FENCE RUNNING
NORTH. THIS CORRESPONDS WITHIN REASON TO W.P.A. CHAINING NOTES DATED 7/15/41.

PLAN VIEW

(SHOW A MINIMUM OF THREE REFERENCE TIES TO DURABLE PHYSICAL OBJECTS, RELEVANT MONUMENTS AND PHYSICAL
CONDITIONS THAT WILL ENABLE RECOVERY OF THE CORNER.)(0.0') β PER I.D.O.T. LAND CORNER SURVEY DATED 10/5/1977(0.0') η PER BLACK HAWK COUNTY ROAD PLANS(0.0') \S PER WPA CHAINING NOTES DATED 7/18/1939(0.0') \S PER WPA CHAINING NOTES DATED 7/15/1941(0.0') η PER PLAT OF SURVEY FEE BK #2005-12527 DATED 9/13/2004

(BEARINGS ARE BASED UPON GEODETIC NORTH)

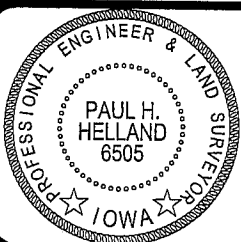
HELLAND ENGINEERING & SURVEYING, LTD.
1107 Technology Parkway
Cedar Falls, Iowa 50613-6951
(319)-266-0161SHINER = 8D NAIL & 1 15/16"Ø METAL SHINER
OPC = PLASTIC CAP (O=ORANGE, R=RED, Y=YELLOW)

(00') RECORDED AS

FILE NAME: 07-156C2.DWG

LIST CORNERS TO BE INDEXED

CORNER	SECTION	TOWNSHIP	RANGE
SW CORNER	32	88N	11W
SE CORNER SW 1/4 SW 1/4	32	88N	11W

I hereby certify that this land surveying document was prepared
and the related survey work was performed by me or under my
direct personal supervision and that I am a duly licensed Land
Surveyor under the laws of the State of Iowa.Paul H. Helland
License Number 6505
My license renewal date is December 31, 2007.
All pages or sheets are covered by this seal except: