

Kyle J. Helland, 6109 Chancellor Drive, Cedar Falls, Iowa 50613-6916, (319)-266-0161

# UNITED STATES PUBLIC LAND SURVEY CORNER CERTIFICATE OF

LAND SURVEY MONUMENTS SITUATED IN SECTION NO. 32, TOWNSHIP NO. 88 NORTH, RANGE NO. 11 WEST OF THE FIFTH PRINCIPAL MERIDIAN, BLACK HAWK COUNTY, IOWA.  
PREVIOUSLY RECORDED IN #2007024456

(SHOW REASON FOR PREPARING THIS CERTIFICATE, THE EVIDENCE AND DETAILED PROCEDURES USED IN ESTABLISHING THE CORNER POSITIONS AND MONUMENTATION FOUND OR PLACED.)

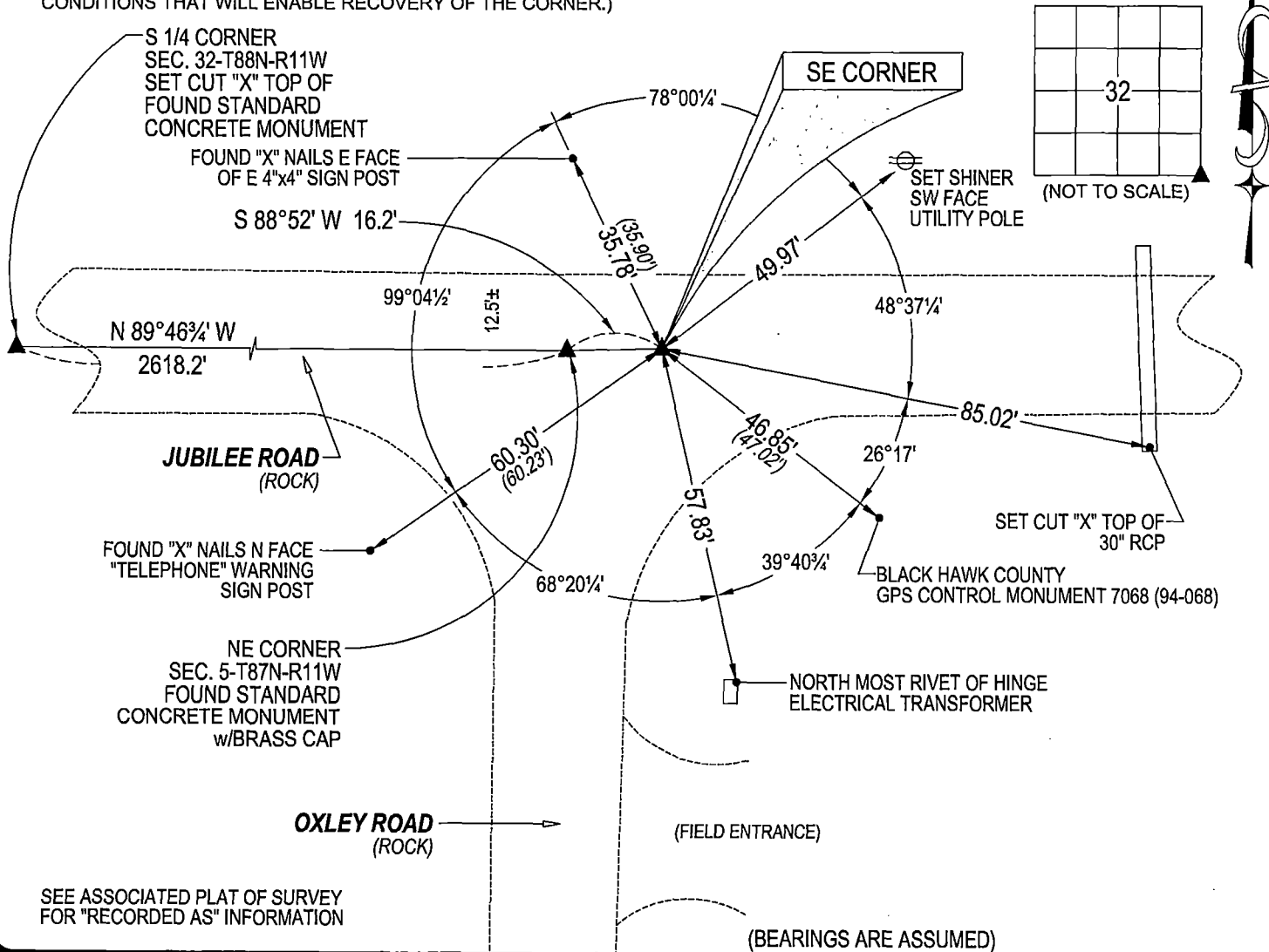
MONUMENT DESCRIPTION AND REMARKS:

REFERENCE TIES HAVE CHANGED. SURVEY COMPLETED IN THE SE 1/4 OF SEC. 32-T88N-R11W.

SE CORNER: USPLSCC RECORDED IN #2007024456 DATED 05/16/2007 CALLS FOR [NO CURRENT CORNER CERTIFICATE ON FILE IN THE BLACK HAWK COUNTY RECORDER'S OFFICE. FOUND CONCRETE WPA MONUMENT 12 INCHES BELOW ROAD SURFACE WITH IRON PIN ALONG THE SOUTHWEST SIDE OF THE MONUMENT 3 INCHES BELOW THE FACE OF THE MONUMENT. MONUMENT USED FOR SURVEY IN SE 1/4 OF SECTION 32.] FOUND STANDARD CONCRETE MONUMENT w/BRASS CAP 0.7± DEEP AND UTILIZED AS THE CORNER.

## PLAN VIEW

(SHOW A MINIMUM OF THREE REFERENCE TIES TO DURABLE PHYSICAL OBJECTS, RELEVANT MONUMENTS AND PHYSICAL CONDITIONS THAT WILL ENABLE RECOVERY OF THE CORNER.)



SEE ASSOCIATED PLAT OF SURVEY FOR "RECORDED AS" INFORMATION



HELLAND ENGINEERING & SURVEYING, LTD.  
6109 Chancellor Drive  
Cedar Falls, Iowa 50613-6916  
(319)-266-0161

SHINER = 4d. NAIL & 1 5/16"Ø METAL SHINER DRAWN BY: JPH  
BRASS TAG = 4d. NAIL & 13/16"Ø BRASS TAG  
OPC = PLASTIC CAP (O=ORANGE, R=RED, Y=YELLOW)  
(00') RECORDED AS FILE NAME: 24-122-23.DWG



I hereby certify that this land surveying document was prepared and the related survey work was performed by me or under my direct personal supervision and that I am a duly licensed Professional Land Surveyor under the laws of the State of Iowa.

Kyle J. Helland  
License Number 23212  
My license renewal date is December 31, 2025.  
All pages or sheets are covered by this seal except:

### LIST CORNERS TO BE INDEXED

CORNER	SECTION / TOWNSHIP / RANGE		
SE CORNER	32	88N	11W
SW CORNER	33	88N	11W