

Paul H. Helland, 1107 Technology Parkway, Cedar Falls, Iowa 50613-6951, (319)-266-0161

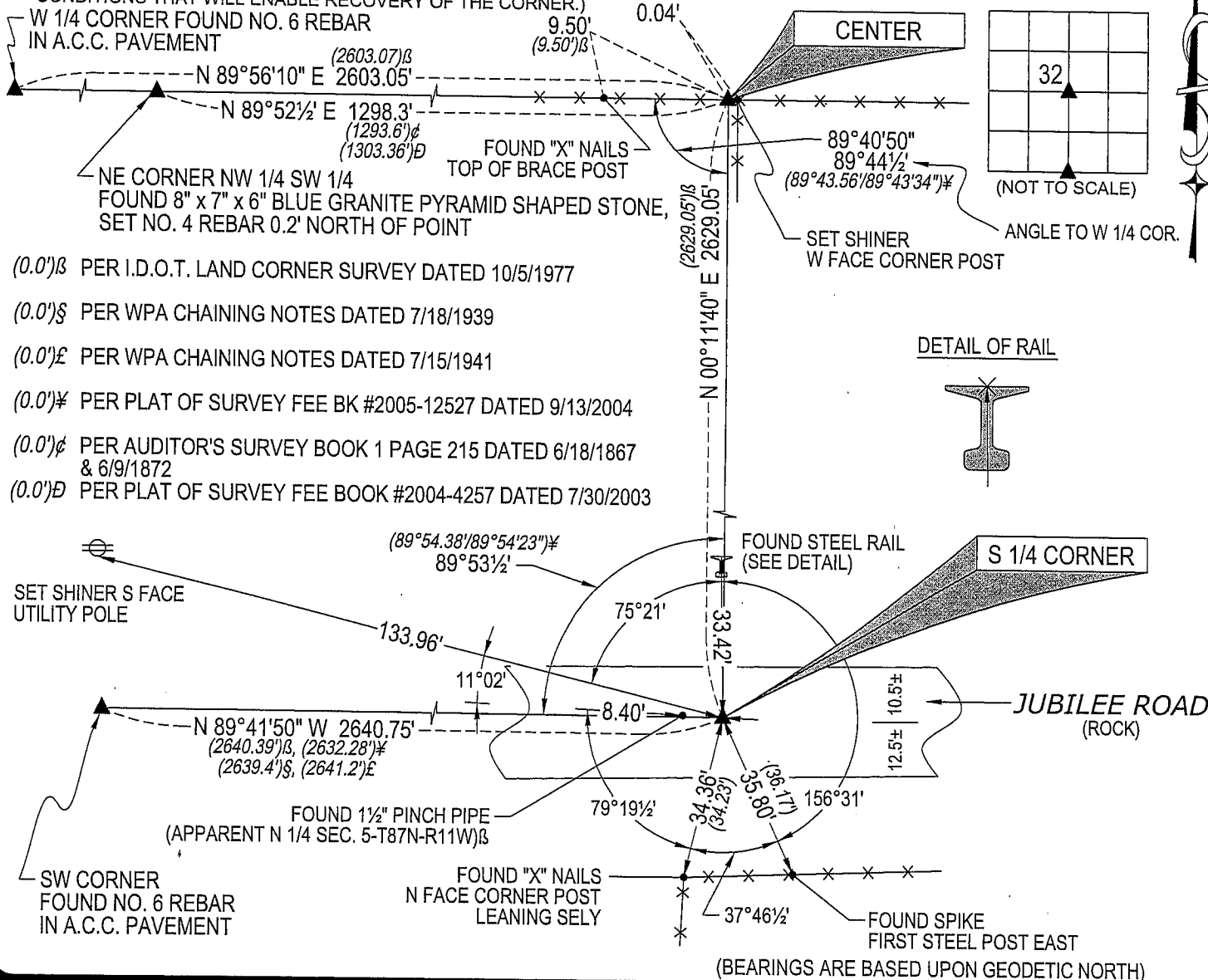
UNITED STATES PUBLIC LAND SURVEY CORNER CERTIFICATE
OFLAND SURVEY MONUMENTS SITUATED IN SECTION NO. 32, TOWNSHIP NO. 88 NORTH, RANGE
NO. 11 WEST OF THE FIFTH PRINCIPAL MERIDIAN, BLACK HAWK COUNTY, IOWA.PREVIOUSLY RECORDED IN N/A(SHOW REASON FOR PREPARING THIS CERTIFICATE, THE EVIDENCE AND DETAILED PROCEDURES USED IN ESTABLISHING THE
CORNER POSITIONS AND MONUMENTATION FOUND OR PLACED.)

MONUMENT DESCRIPTION AND REMARKS:

NO USPLSCC ON FILE. SURVEY COMPLETED IN THE SE 1/4 OF THE SW 1/4 SEC. 32-T88N-R11W.

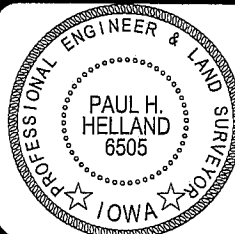
- **S 1/4 CORNER:** BLACK HAWK COUNTY ENGINEER REFERENCE TIES DATED 7/18/39 CALL FOR [FOUND IRON BAR 1/2" x 24" LONG, LOWERED EVIDENCE AND SET C.M. 12" DEEP]. W.P.A. CHAINING NOTES DATED 7/15/41 CALL FOR [S.C.M.]. I.D.O.T. LAND CORNER SURVEY DATED 10/5/1977 CALL FOR [FOUND CONCRETE MONUMENT 3" DEEP. SET IRON PIN ON NORTH SIDE]. FOUND STD. CONCRETE MONUMENT w/BRASS CAP 0.3" DEEP & UTILIZED AS THE S 1/4 CORNER OF 32-T88N-R11W. ALSO FOUND 1 1/2" OPEN PIPE 8.4' WEST OF SAID CONCRETE MONUMENT. SAID I.D.O.T. LAND CORNER SURVEY CALLS SAID 1 1/2" OPEN PIPE THE N 1/4 CORNER OF SEC. 5-T87N-R11W.
- **CENTER:** NO BLACK HAWK COUNTY ENGINEER REFERENCE TIES AVAILABLE. AUDITOR'S SURVEY BOOK 1 PAGE 215 DATED 6/18/1867 & 6/9/1872 CALLS FOR [STONE]. I.D.O.T. LAND CORNER SURVEY DATED 10/5/1977 CALL FOR [FOUND 8x10x10 STONE 2" DEEP]. FOUND MULTIPLE STONES AROUND A NEW CORNER POST. ORIGINAL STONE APPEARS TO HAVE BEEN REMOVED DURING THE SETTING OF THE NEW CORNER POST. SET NO. 4 REBAR w/OPC #6505 AT RECORDED DISTANCES FROM THE W 1/4 AND THE S 1/4 PER SAID I.D.O.T. LAND CORNER SURVEY. POSITION FITS LONE REMAINING TIE.

PLAN VIEW

(SHOW A MINIMUM OF THREE REFERENCE TIES TO DURABLE PHYSICAL OBJECTS, RELEVANT MONUMENTS AND PHYSICAL
CONDITIONS THAT WILL ENABLE RECOVERY OF THE CORNER.)HELLAND ENGINEERING & SURVEYING, LTD.
1107 Technology Parkway
Cedar Falls, Iowa 50613-6951
(319)-266-0161SHINER = 8D NAIL & 1 15/16" Ø METAL SHINER
OPC = PLASTIC CAP (O=ORANGE, R=RED, Y=YELLOW)

(00') RECORDED AS

FILE NAME: 07-156C3.DWG

I hereby certify that this land surveying document was prepared
and the related survey work was performed by me or under my
direct personal supervision and that I am a duly licensed Land
Surveyor under the laws of the State of Iowa.Paul H. Helland
License Number 6505
My license renewal date is December 31, 2007.
All pages or sheets are covered by this seal except:

LIST CORNERS TO BE INDEXED

CORNER	SECTION	TOWNSHIP	RANGE
S 1/4 CORNER	32	88N	11W
CENTER	32	88N	11W