

PROOF FILED FOR RECORD DEC 10, 2004, AT 4:00 P. M. FEE 1-5.00-1.00/

COMPARED

*Patricia A. Jess*

BLACK HAWK COUNTY RECORDER

ENV KESS &amp; ASSOCIATES

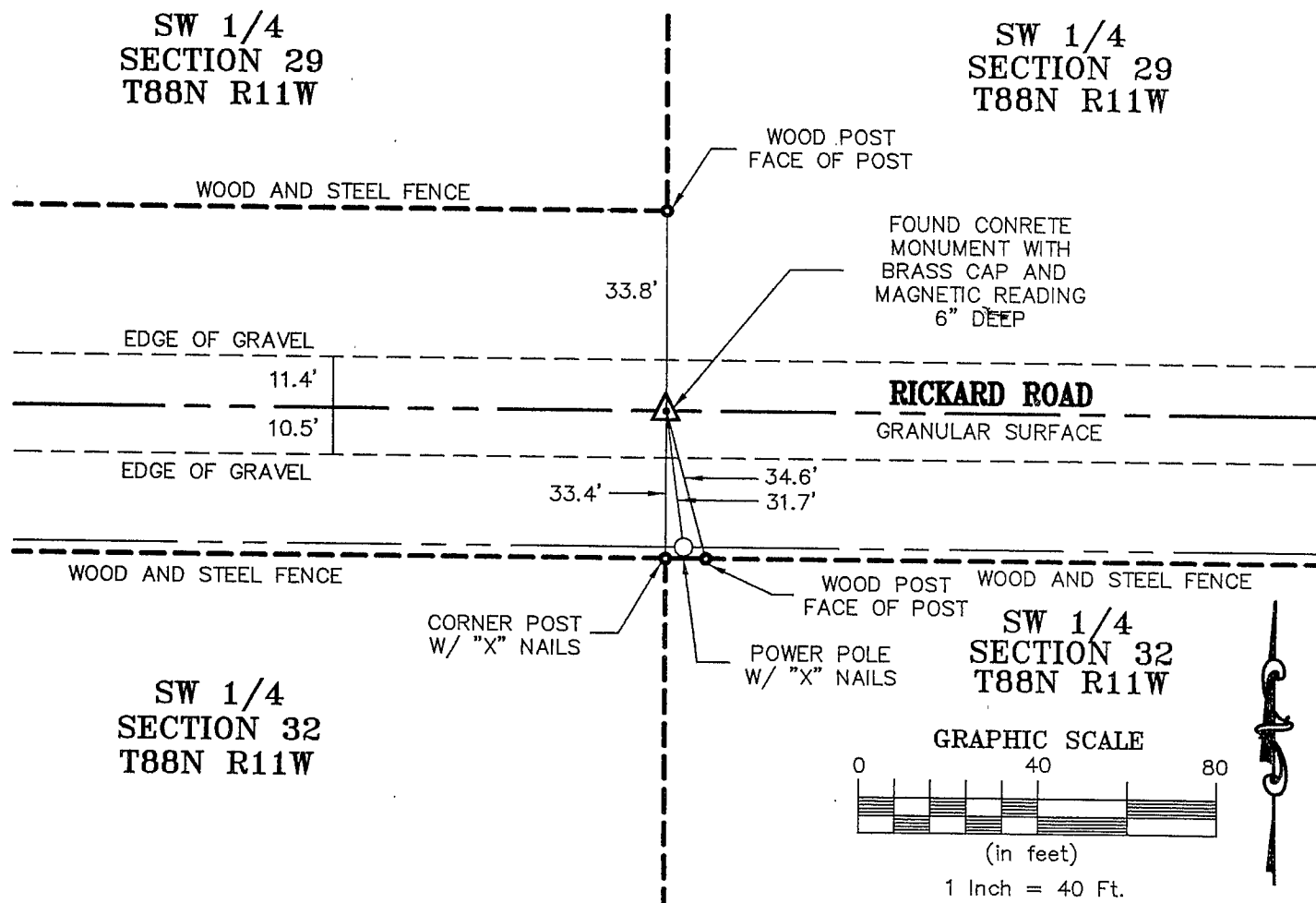
Kirk D. Eschliman, P.L.S. Iowa Lic. No. 9961, 723 Broadway Street, Waterloo, Iowa 50703 - Phone: 319-234-0509

UNITED STATES PUBLIC LAND SURVEY CORNER CERTIFICATE  
OFLAND SURVEY MONUMENTS SITUATED IN SECTION 32, TOWNSHIP 88 NORTH  
RANGE 11 WEST, OF THE FIFTH PRINCIPAL MERIDIAN, BLACK HAWK COUNTY, IOWA.  
PREVIOUSLY RECORDED IN \_\_\_\_\_ (BOOK, PAGE, DOCUMENT NUMBER, ETC.) IN THE COUNTY RECORDER'S OFFICE.

(SHOW REASON FOR PREPARING THIS CERTIFICATE, THE EVIDENCE AND DETAILED PROCEDURES USED IN ESTABLISHING THE CORNER POSITIONS AND MONUMENTATION FOUND OR PLACED.)

MONUMENT DESCRIPTION AND REMARKS: FOUND CONCRETE MONUMENT WITH BRASS CAP AND MAGNETIC  
READING 6" DEEP

## PLAN - VIEW

I HEREBY CERTIFY THAT THIS LAND SURVEYING DOCUMENT  
WAS PREPARED AND RELATED SURVEY WORK WAS  
PERFORMED BY ME OR UNDER MY DIRECT PERSONAL  
SUPERVISION AND THAT I AM A DULY LICENSED LAND  
SURVEYOR UNDER THE LAWS OF THE STATE OF IOWA.*Kirk D. Eschliman*

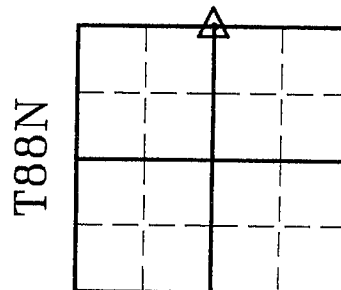
DATE: 08/07/2003

KIRK D. ESCHLIMAN, P.L.S. IOWA LIC. NO. 9961  
MY LICENSE RENEWAL DATE IS DECEMBER 31, 2003  
PAGES OR SHEETS COVERED BY THIS SIGNATURE & SEAL: SHEET 1 OF 1FOR: JERRY & CHERYL SCHMITZ  
9406 RICKARD ROAD  
JESUP, IOWA 50648REQ. BY: JERRY SCHMITZ  
JESUP, IOWA**KESS & ASSOCIATES, INC.**  
PROFESSIONAL LAND SURVEYORS : 723 BROADWAY, WATERLOO, IOWA 50703-5811  
DATE: 08/07/2003 C.A.D.D. FILE: 03A83CC1.DWG PROJECT NO.: 03A83

## List of corners to be indexed:

Corners	Section	Township	Range
N 1/4	32	T88N	R11W

## SECTION 32



R11W