

Filed for record in Black Hawk County, Iowa
Judith A. McCarthy, County Recorder

Paul H. Helland, 1107 Technology Parkway, Cedar Falls, Iowa 50613-6951, (319)-266-0161

UNITED STATES PUBLIC LAND SURVEY CORNER CERTIFICATE OF

LAND SURVEY MONUMENTS SITUATED IN SECTION NO. 32, TOWNSHIP NO. 88 NORTH, RANGE
NO. 11 WEST OF THE FIFTH PRINCIPAL MERIDIAN, BLACK HAWK COUNTY, IOWA.

PREVIOUSLY RECORDED IN N/A

(SHOW REASON FOR PREPARING THIS CERTIFICATE, THE EVIDENCE AND DETAILED PROCEDURES USED IN ESTABLISHING THE CORNER POSITIONS AND MONUMENTATION FOUND OR PLACED.)

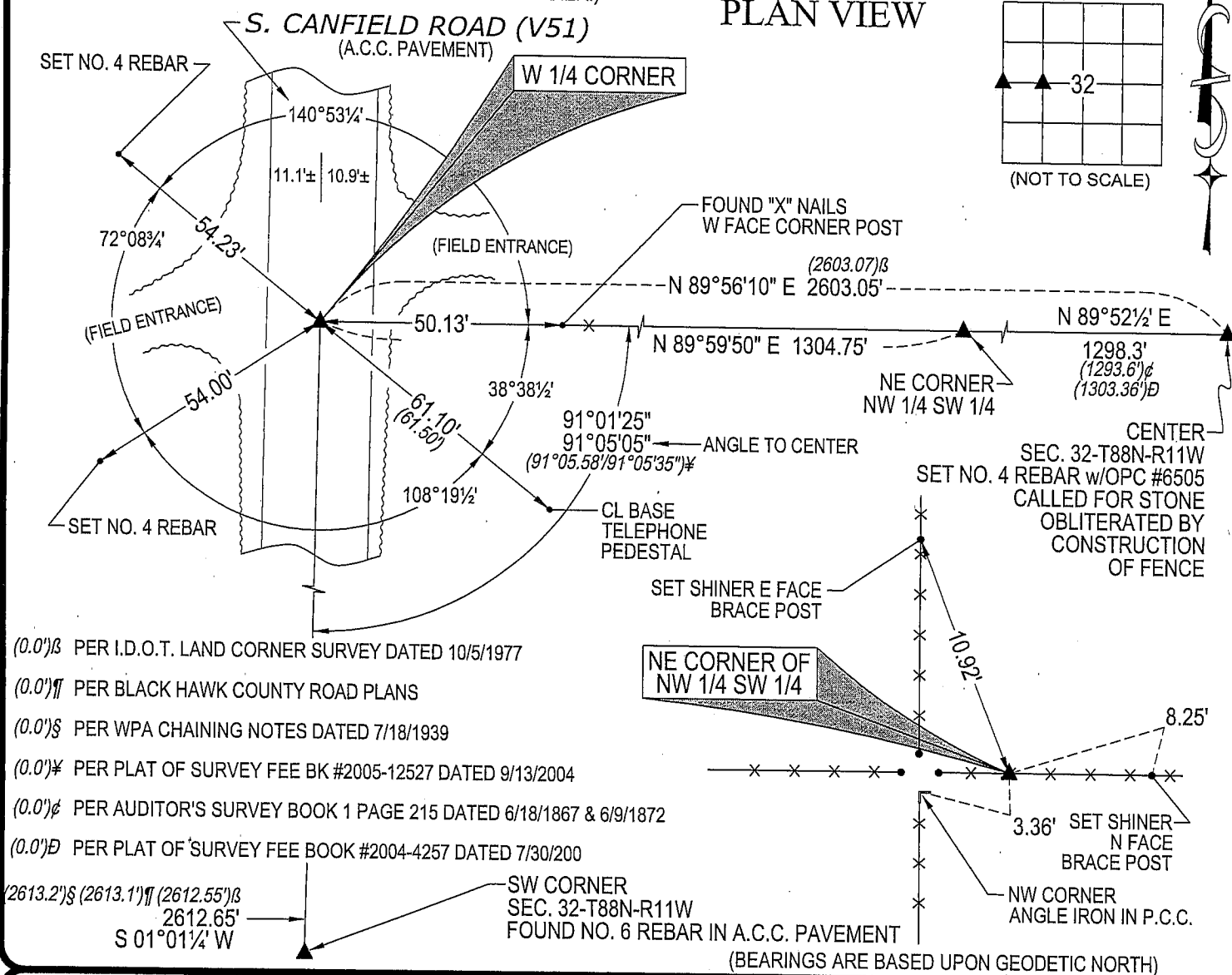
MONUMENT DESCRIPTION AND REMARKS:

NO USPLSCC ON FILE. SURVEY COMPLETED IN THE SE 1/4 OF THE SW 1/4 OF SEC. 32-T88N-R11W,
W 1/4 CORNER. AUDITOR'S SURVEY BOOK 111 P. 13

W 1/4 CORNER: AUDITOR'S SURVEY BOOK 1 PAGE 215 DATED 6/18/1867 & 6/9/1872 CALLS FOR [STONE]. BLACK HAWK COUNTY ENGINEER REFERENCE TIES DATED 7/18/39 CALL FOR [S.C.M.]. I.D.O.T. LAND CORNER SURVEY DATED 10/5/1977 CALL FOR [FOUND IRON PIN IN ASPHALT]. FOUND NO. 6 REBAR IN A.C.C. PAVEMENT.

NE CORNER NW 1/4 SW 1/4: NO BLACK HAWK COUNTY ENGINEER REFERENCE TIES AVAILABLE. AUDITOR'S SURVEY BOOK 1 PAGE 215 DATED 6/18/1867 & 6/9/1872 CALLS FOR [STONE]. PLAT OF SURVEY FEE BK #2005-12527 BY KIRK D. ESCHLIMAN DATED 9/13/2004 HAS A SYMBOL AT THIS LOCATION REPRESENTING "1/2" IRON PIN & CAP SET". AFTER CONTACTING MR. ESCHLIMAN, HE STATED THAT A STONE WAS FOUND. SEARCHED AREA PER LOCATION OF SAID PLAT, NO STONE WAS FOUND. CONTINUED SEARCHING, FOUND A 8" x 7" x 6" BLUE GRANITE STONE. SAID STONE WAS 0.1' DEEP, BEING PYRAMID SHAPED WITH THE POINT UP. UTILIZED SAID STONE AT HIGH POINT AND SET NO. 4 REBAR w/OPC #6505 (FOR MAGNETIC DETECTION ONLY) 0.2' NORTH OF SAID POINT.

(SHOW A MINIMUM OF THREE REFERENCE TIES TO DURABLE PHYSICAL OBJECTS, RELEVANT MONUMENTS AND PHYSICAL CONDITIONS THAT WILL ENABLE RECOVERY OF THE CORNER.)

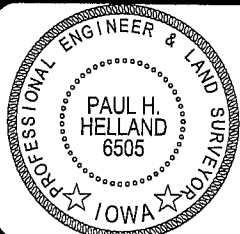


HELLAND ENGINEERING & SURVEYING, LTD.
1107 Technology Parkway
Cedar Falls, Iowa 50613-6951
(319)-266-0161

SHINER = 8D NAIL & 1 15/16"Ø METAL SHINER
OPC = PLASTIC CAP (O=ORANGE, R=RED, Y=YELLOW)

(00") RECORDED AS

FILE NAME: 07-156C1.DWG



I hereby certify that this land surveying document was prepared and the related survey work was performed by me or under my direct personal supervision and that I am a duly licensed Land Surveyor under the laws of the State of Iowa.

Paul H. Helland 5/9/07
License Number 6505
My license renewal date is December 31, 2007.
All pages or sheets are covered by this seal except:

LIST CORNERS TO BE INDEXED

CORNER	SECTION	TOWNSHIP	RANGE
W 1/4 CORNER	32	88N	11W
NE CORNER	32	88N	11W
NW 1/4 SW 1/4			