

File **2012-00005427**

SLSI 9-94
BHC0 03-09

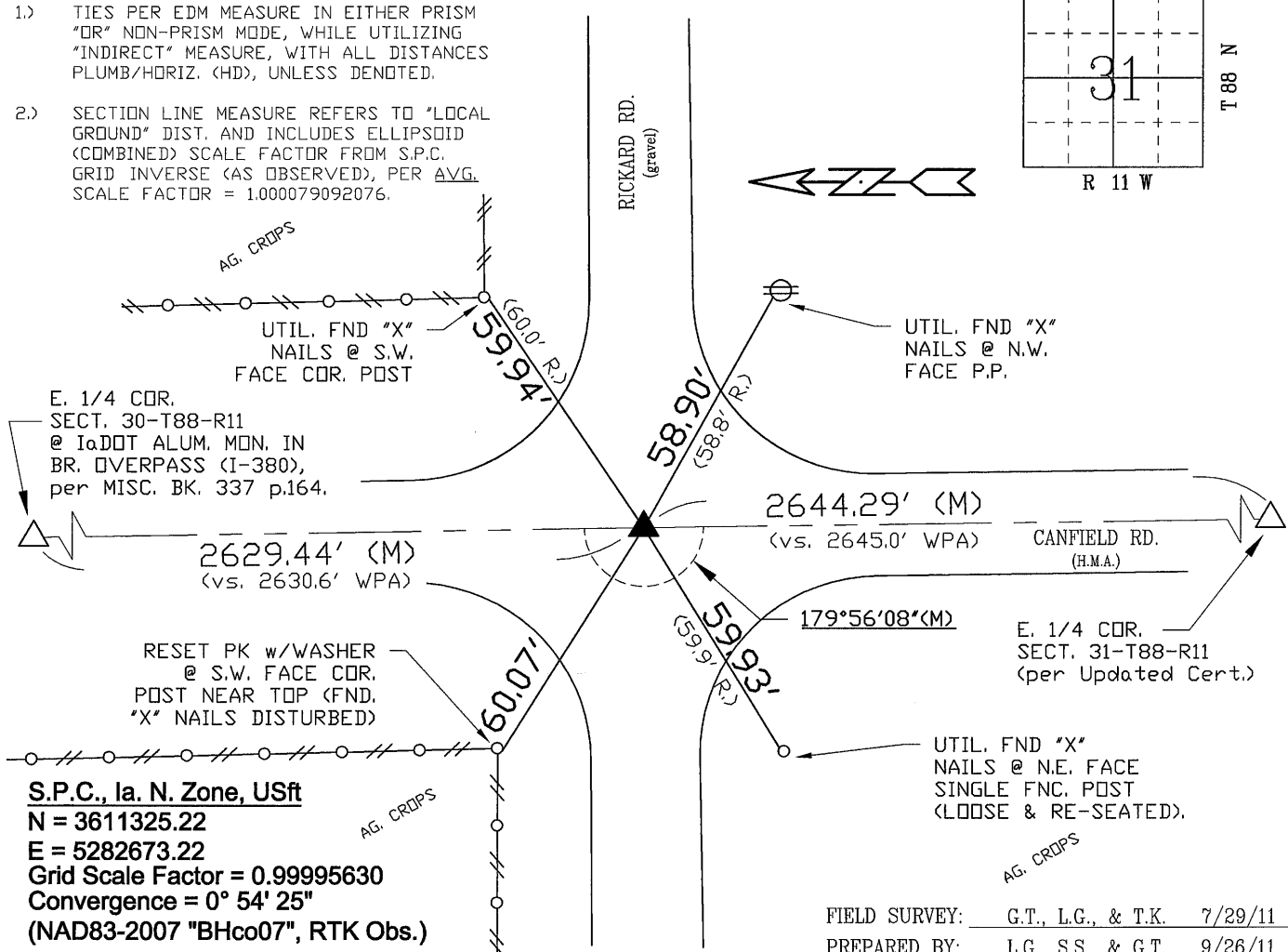
Land Survey Monuments situated in Section 31 , Township 88 N ,
Range 11 W , of the Fifth Principal Meridian, BLACK HAWK County, Iowa.
Previously recorded in FEE Book 2005 , Page 14334 , in County Recorder's Office.

(Evidence and detailed procedures used in establishing the corner position(s) and monumentation found or placed.)

CORNER RESET FOR COLD-IN-PLACE RECYL. & H.M.A. RESURF. PROJECT LFM-121--7X-07. PRIOR TO RESURF. PROJECT, FOUND 5/8" REBAR (IRON PIN) PER CURRENT RECORD AND TEMP. REF. COR. LOC. PER RTK GPS. AFTER 4" DP. MILL (RECYCLE), SOUNDING REMAINED. @ FND 1/2" SQUARE STEEL PIN x 5"L. (BENT & REMOVED), WITH ADDITIONAL EXCAVATION TO $\pm 6"$ DEEP w/SOUNDING REMAINING @ \pm RTK REFERENCE LOCATION. FINAL RESURF. w/ +3" H.M.A., THEN RESET CORNER w/ 5/8" x 6"L. REBAR LOCATED 0.25' EAST OF C.L. H.M.A. PVMT. JNT. AND ALIGNED w/ \pm C.L. SIDE ROAD INTERSECTION (E/W). DELF. (CORNER) ANGLE DENOTED FOR SECTION LINE TO N./S. PER COGO OF RTK GPS MEAS. CORNERS (AS OBSERVED).

FIELD BOOK: Ties per Topcon 7003i #Z0115

A 4x4 grid with a north arrow pointing up. The grid is labeled "R 11 W" at the bottom and "T 88 N" on the right. The number "31" is in the center cell.



PREPARED BY: L.G., S.S., & G.T. 9/26/11

I hereby certify that this land surveying document was prepared and the related survey work was performed by me or under my direct personal supervision and that I am a duly licensed Land Surveyor under the laws of the State of Iowa.

My license renewal date is December 31, 2012

Pages or sheets covered by this seal:

This Land Corner Certificate Only.



<u>Corner</u>	<u>Section</u> -	<u>Township</u> -	<u>Range</u>
N.E. Cor.	31	88 N	11 W
N.W. Cor.	32	88 N	11 W
S.E. Cor.	30	88 N	11 W
S.W. Cor.	29	88 N	11 W

(M) = "Measured" Dimension "NP" = Reflectorless EDM Meas.
(P) = "Platted" Dimension "MLM" = Indirect Measure
(R) = "Record" Dimension "CM" = Concrete Monument
(C) = "Calculated" Dimension "SM" = Survey Marker Spike/Tag
(GS) = Iowa Geodetic Survey "PK" = PK/MAG Nail Brand Style
(WPA) = Works Progress Admin. Survey
"Φ" = per George Miller Survey (BHCos Surveyor 1858-1860)
"S" = per John Ball Survey (BHCos Surveyor 1866-1891)
"N" = per Nathan Barber Survey (BHCos Surveyor 1906-1931)