

I RS  
P gr  
Z

Document Number: 2007024826

Date: May 22, 2007 4:30:00 pm

Aud Fee: 0.00 Rec Fee: 5.00

Trans Tax: 0.00 Rec Management Fee: 1.00

E-Com Fee: 1.00 Non-Standard Page Fee: 0.00

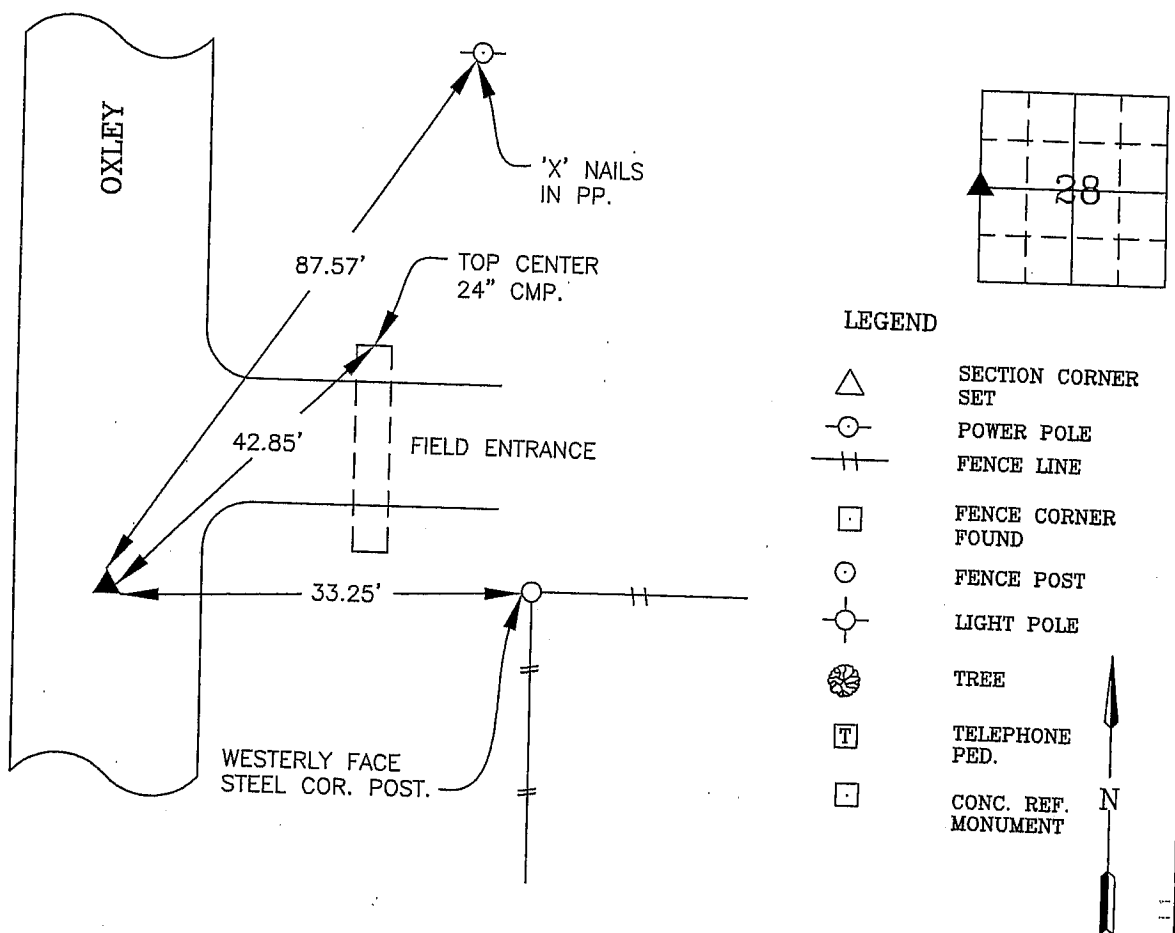
Filed for record in Black Hawk County, Iowa  
Judith A. McCarthy, County RecorderUNITED STATES PUBLIC LAND SURVEY CORNER CERTIFICATE  
OFLand Survey Monuments situated in Section 28, Township 88N, Range 11W, of the Fifth Principal Meridian, BLACK HAWK County, Iowa  
Previously recorded in Book N/A, Page .

Show reason for preparing this certificate, the evidence and detailed procedures used in establishing the corner positions and monumentation found or placed.)

Monument Description and Remarks: WEST QUARTER CORNER 28-88-11FOUND CONCRETE MONUMENT WITH BRASS CAP WITH A HEXAGONAL SHAPED AXLE ON SOUTHWEST SIDEFROM W.P.A. CHAINING NOTES IN COUNTY ENGINEER'S OFFICE.THIS CERTIFICATE WAS PREPARED BECAUSE THERE WAS NO PREVIOUS CORNER CERT. ON FILE

## PLAN - VIEW

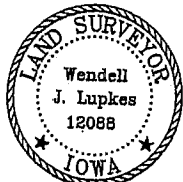
(Show a minimum of three reference ties to durable physical objects, relevant monuments and physical conditions recovery of the corner.)



## LEGEND

- SECTION CORNER SET
- POWER POLE
- FENCE LINE
- FENCE CORNER FOUND
- FENCE POST
- LIGHT POLE
- TREE
- TELEPHONE PED.
- CONC. REF. MONUMENT

I hereby certify that this land surveying document was prepared and the related survey work was performed by me or under my direct personal supervision and that I am a duly licensed Land Surveyor under the laws of the State of Iowa.

Wendell J. Lupkes 5-14-07  
WENDELL J. LUPKES, L.S. DATE

License number 12088

My license renewal date is December 31, 2008

Pages or sheets covered by this seal: \_\_\_\_\_

## List Corner to be Indexed

Corner	Section	Twp	Range
W QTR. COR.	28	88	11

SECTION CORNER  
REFERENCE TIESScale  
NONEdrawn by  
MAKdate  
4/9/07

T:\work\CORNERS\CORNERS.awa, 5/11/2007 10:40:35 AM, 1.1