

I AS  
P gw  
Z

Document Number: 2007024825

Date: May 22, 2007 4:30:00 pm

Aud Fee: 0.00 Rec Fee: \*5.00

Trans Tax: 0.00 Rec Management Fee: 1.00

E-Corn Fee: 1.00 Non-Standard Page Fee: 0.00

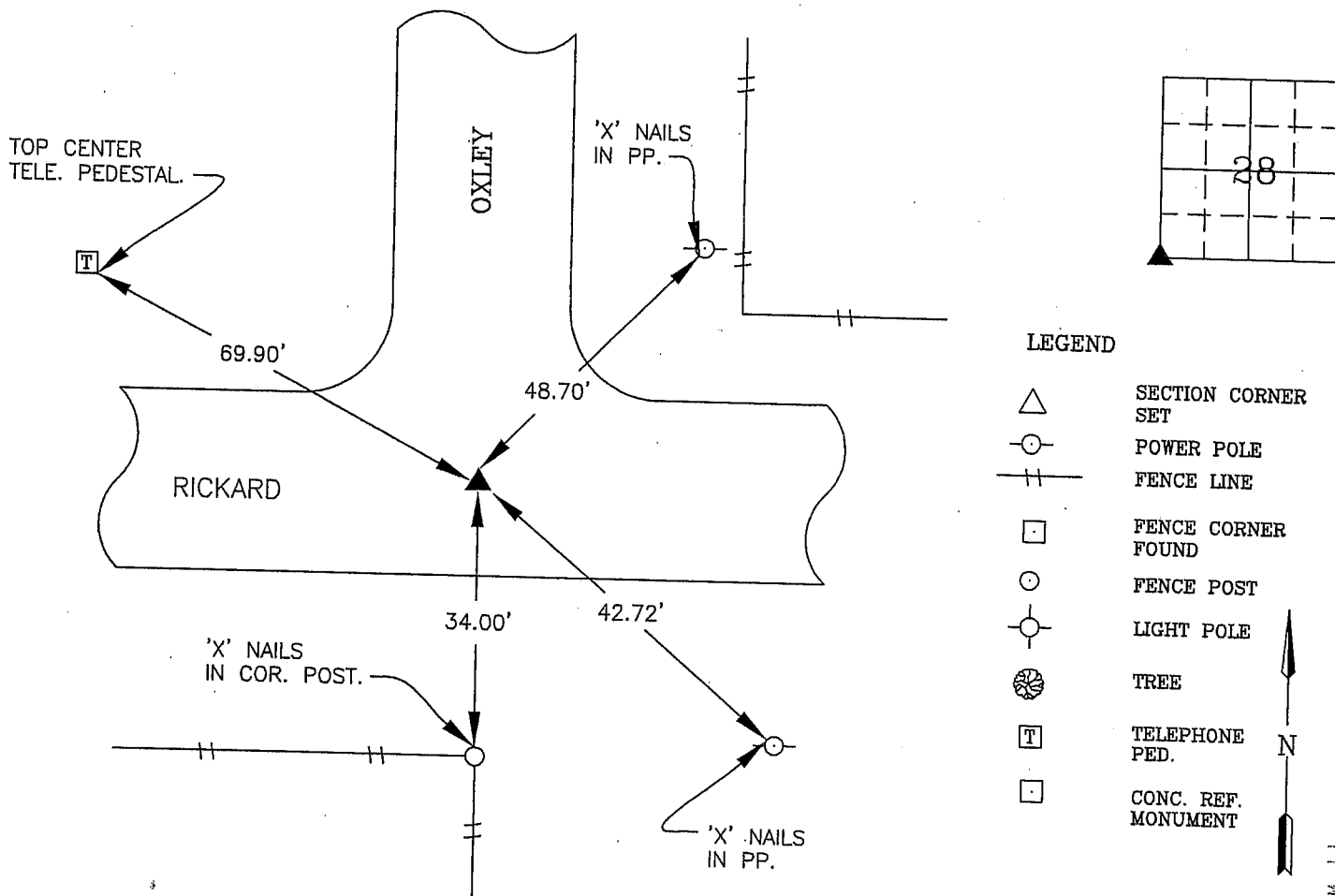
Filed for record in Black Hawk County, Iowa  
Judith A. McCarthy, County RecorderUNITED STATES PUBLIC LAND SURVEY CORNER CERTIFICATE  
OFLand Survey Monuments situated in Section 28, Township 88N, Range 11W, of the Fifth Principal Meridian, BLACK HAWK County, Iowa  
Previously recorded in Book N/A, Page 

Show reason for preparing this certificate, the evidence and detailed procedures used in establishing the corner positions and monumentation found or placed.)

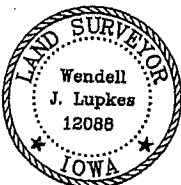
Monument Description and Remarks: SOUTHWEST CORNER 28-88-11FOUND CONCRETE MONUMENT WITH BRASS CAP WITH A 1/2" REBAR ON WEST SIDEFROM W.P.A. CHAINING NOTES IN COUNTY ENGINEER'S OFFICE.THIS CERTIFICATE WAS PREPARED BECAUSE THERE WAS NO PREVIOUS CORNER CERT. ON FILE

## PLAN - VIEW

(Show a minimum of three reference ties to durable physical objects, relevant monuments and physical conditions recovery of the corner.)



I hereby certify that this land surveying document was prepared and the related survey work was performed by me or under my direct personal supervision and that I am a duly licensed Land Surveyor under the laws of the State of Iowa.

Wendell J. Lupkes 5-14-07  
WENDELL J. LUPKES, L.S. DATE

License number 12088

My license renewal date is December 31, 2008

Pages or sheets covered by this seal: 

## List Corner to be Indexed

Corner	Section	Twp	Range
SW COR.	28	88	11

VJ Engineering  
1501 Technology Parkway  
Cedar Falls, Iowa - 319-266-5829SECTION CORNER  
REFERENCE TIES

Scale

None

drawn by

MAK

date

3/22/07

I:\CORNERS\WORKING\2007\5-11-2007 10:40:24 AM 1.1