

PROOF FILED FOR RECORD FEB 17, 2006, AT 11:00 A.M. FEE 1-5.00-1.00/

COMPARED

Patricia A. Schell

BLACK HAWK COUNTY RECORDER

ENV WAYNE CLAASSEN ENGINEERING AND SURVEYING INC

WAYNE CLAASSEN ENGINEERING AND SURVEYING, INC.
P.O. BOX 898 WATERLOO, IOWA 50704-0898PHONE: (VOICE) 319-235-6294
(FAX) 319-235-0028

UNITED STATES PUBLIC LAND SURVEY CORNER CERTIFICATE

Land Survey Monuments situated in Section 28, Township 88 North, Range 11 West, of the Fifth Principal Meridian, Black Hawk County, Iowa.Previously recorded in Doc. No. 2003-39870 in County Recorder's Office.
(book, page, document number, etc.)

(Show reason for preparing this certificate, the evidence and detailed procedures used in establishing the corner positions and monumentation found or placed.)

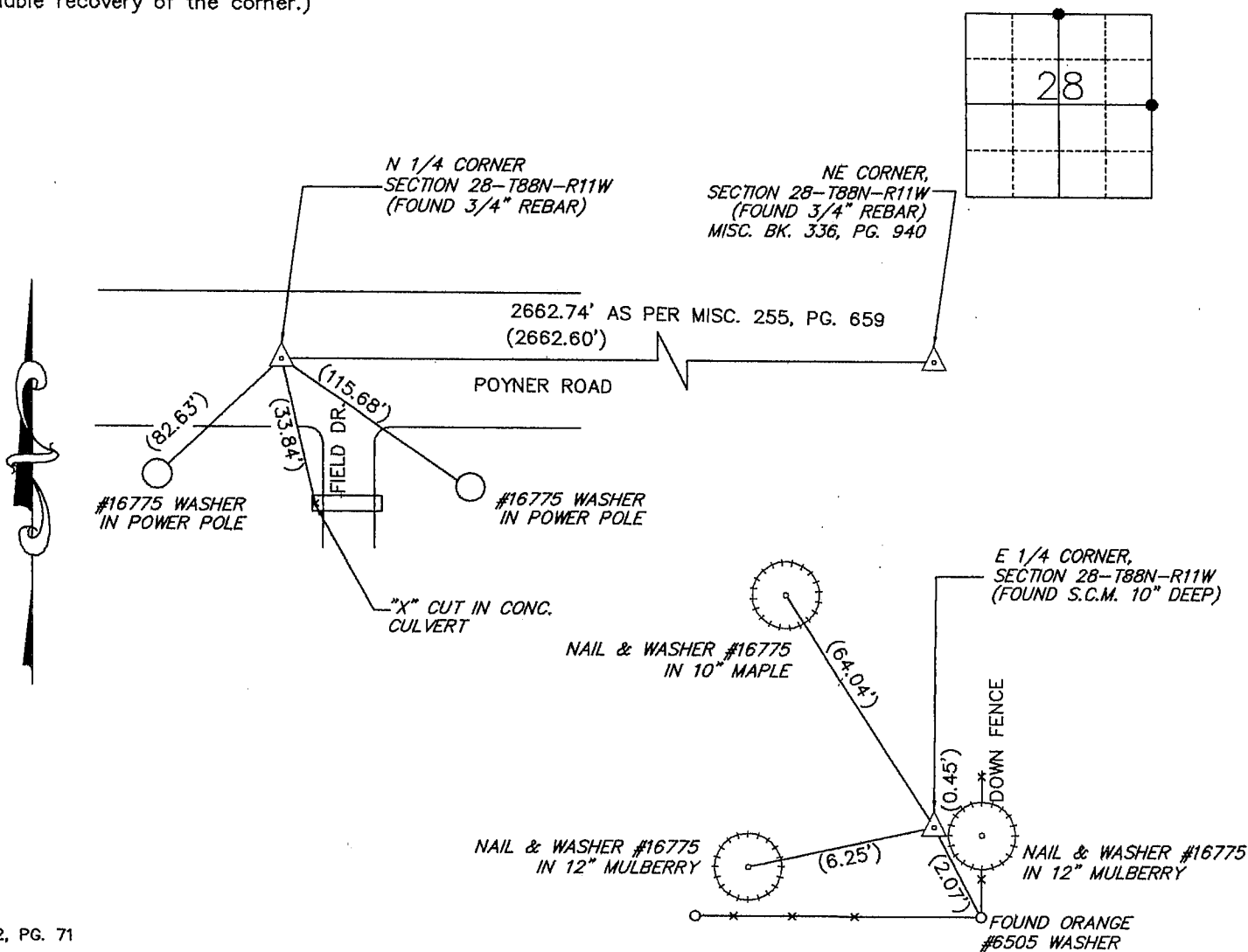
Monument Description and Remarks

N 1/4 Corner: No corner certificate on file. Found 3/4" diameter rebar that fits 1984 survey recorded in Misc. Bk. 255, pg. 659 of Black Hawk Recorder's office.

E 1/4 Corner: found S.C.M. as per Document No. 2003-39870 with some ties missing.

PLAN - VIEW

(Show a minimum of three reference ties to durable physical objects, relevant monuments and physical conditions that will enable recovery of the corner.)



I hereby certify that this land surveying document was prepared and the related survey work was performed by me or under my direct personal supervision and that I am a duly Licensed Land Surveyor under the laws of the State of Iowa.

Signature: *David L. Scheil*

David L. Scheil, L.S.

Date: FEB. 15, 2006 Lic. No. 18775

Pages or Sheets Covered by this Seal: THIS SHEET ONLY.

My license renewal date is December 31, 2006

SEAL

List Corners to be Indexed

Corners	Section	Twp	Range
N 1/4 CORNER,	28	88 N	11 W
E 1/4 CORNER,	28	88 N	11 W

