

Filed For Record 10/31/03

Fee Bk. 2004 014987 (J.T.)

DANIEL T. CRAWFORD P.E. & L.S. Crawford Engineering & Surveying, Inc., Independence, Iowa 319/334-7077

UNITED STATES PUBLIC LAND SURVEY CORNER CERTIFICATE
OF

Land Survey Monuments situated in Section 27, Township 88 North, Range 11 West, of the Fifth Principal Meridian, Black Hawk County, Iowa.

Previously recorded in N/A in County Recorder's Office.

Monument Description and Remarks:

Reason for preparing certificate: Current certificate not on file.

Evidence and detailed procedure used to establish corner position: _____

S 1/4 Corner - Corner position previously monumented with standard concrete monument.

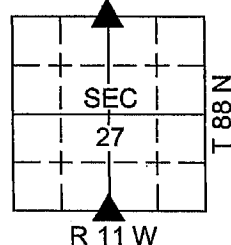
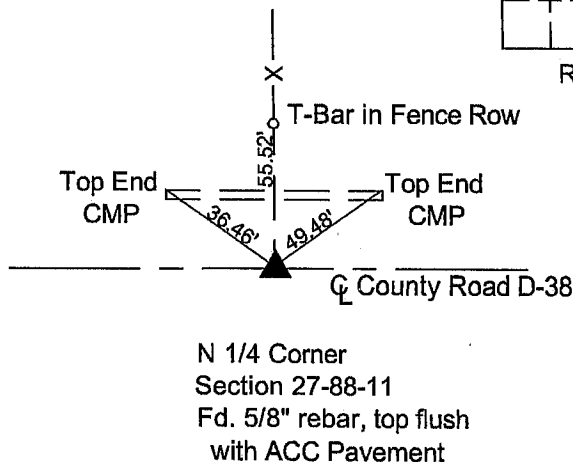
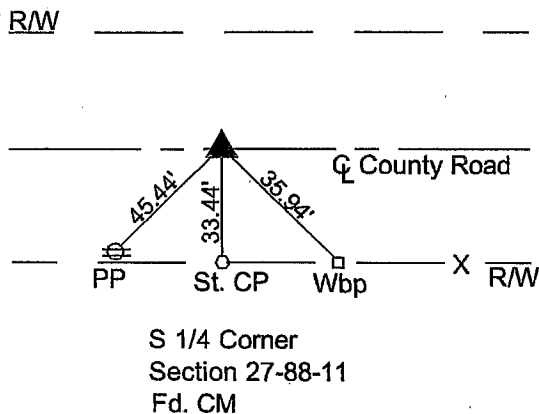
N 1/4 Corner - Corner position previously monumented with 5/8" rebar in ACC pavement surface.

Monumentation found or placed: S 1/4 Corner - Fd. SCM w/brass cap 27/34;

N 1/4 Corner - Fd. 5/8" rebar, top flush with ACC pavement surface.

PLAN-VIEW

(Show a minimum of three reference ties to durable physical objects, relevant monuments and physical conditions that will enable recovery of the corner).



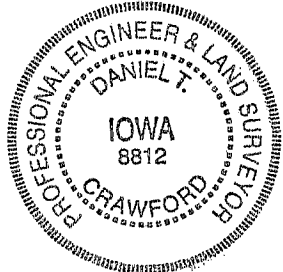
I hereby certify that the survey work was completed and this land surveying document was prepared by me or under my direct personal supervision and that I am a duly licensed land surveyor under the laws of the State of Iowa.

Signature: Daniel T. Crawford
DANIEL T. CRAWFORD P.E. & L.S.

Date: 10-30-03 Reg. No. 8812

My license renewal date is December 31, 2003

SEAL



List Corners to be Indexed

Corners	Section	Twp.	Range
S 1/4 Corner	27	88 N	11 W
N 1/4 Corner	27	88 N	11 W

S 1/4 COR. prev. recorded.

in Fee Book #2003 39870

per PLS #6505

J.T.

11-12-03