

TEKIPPE ENGINEERING PC 128 SOUTH VINE ST WEST UNION IA 52175

TEKIPPE ENGINEERING, P.C., 128 South Vine Street, West Union, Iowa 52175 Phone (563) 422-5131

UNITED STATES PUBLIC LAND SURVEY CORNER CERTIFICATE

OF

Land Survey Monuments situated in Section 26 , Township 88 North, Range 11 West of the Fifth Principal Meridian, BLACK HAWK County, Iowa.

Previously recorded in none in County Recorder's Office.
(book, page, document number, etc.)

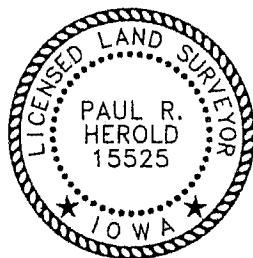
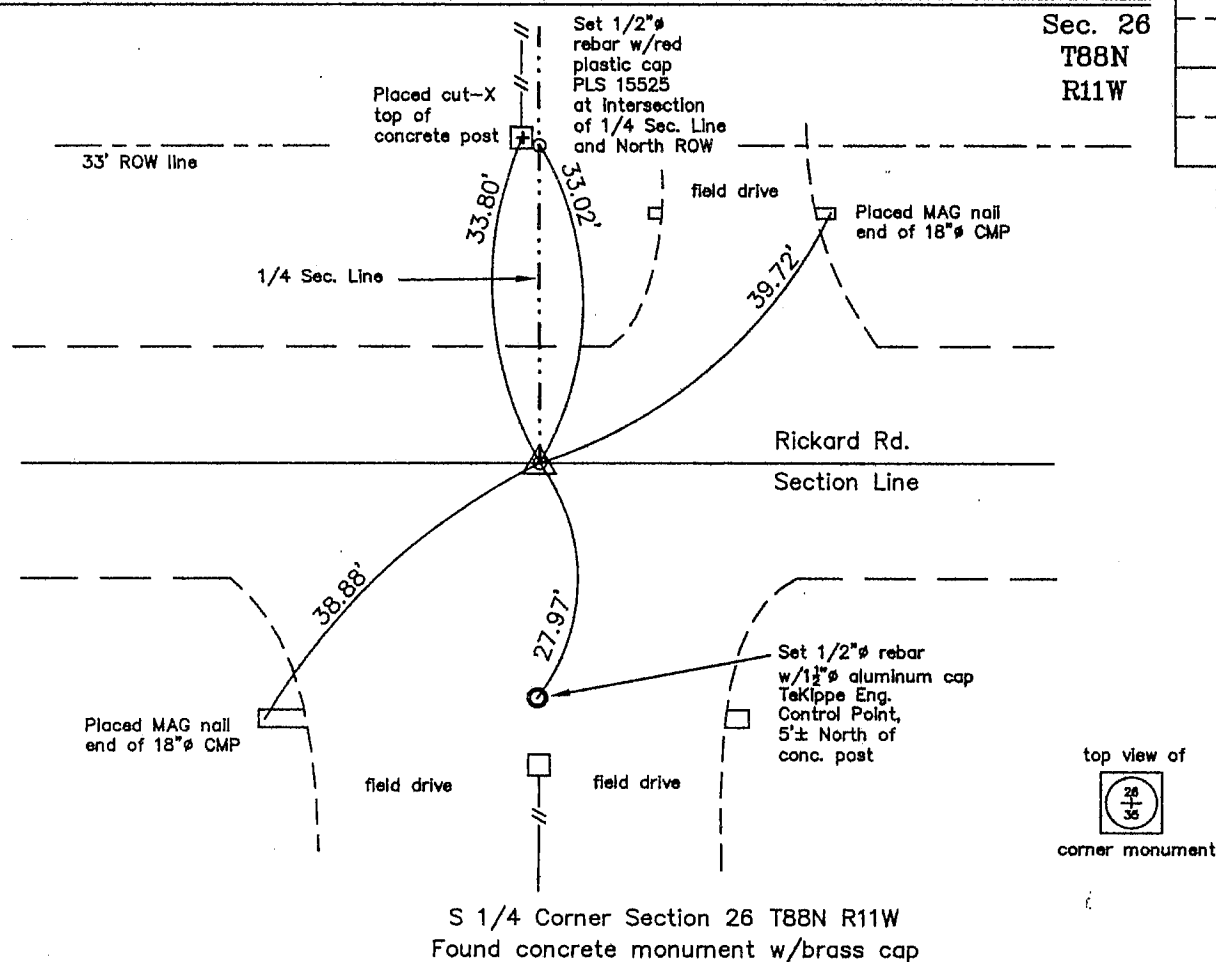
(Show reason for preparing this certificate, the evidence and detailed procedures used in establishing the corner positions and monumentation found or placed.)

Monument Description and Remarks: S 1/4 Corner Section 26 T88N R11W: Found concrete monument w/brass cap with information obtained from the Black Hawk County Engineer's Office on Page 32 of Field Book 10 for Township 88, Range 11.

PLAN - VIEW

268811w.dwg Project Number 02088.LS
FB. 52B PG. 1-2

(Show a minimum of three reference ties to durable physical objects, relevant monuments and physical conditions that will enable recovery of the corner.)



I hereby certify that this land surveying document was prepared and the related survey work was performed by me or under my direct personal supervision and that I am a duly licensed Land Surveyor under the laws of the State of Iowa.

Tane R. Hessel 5-2-02

Paul R. Herold

Date _____

License number 15525

My license renewal date is December 31, 2002.

Sheets covered by this seal: Individual

List Corners to be Indexed

Corners	Section	Twp.	Range
S 1/4	26	88N	11W