

Prepared By: Brian M. Crawford, PLS Crawford Engineering & Surveying, Inc., Independence, Iowa 319/334-7077

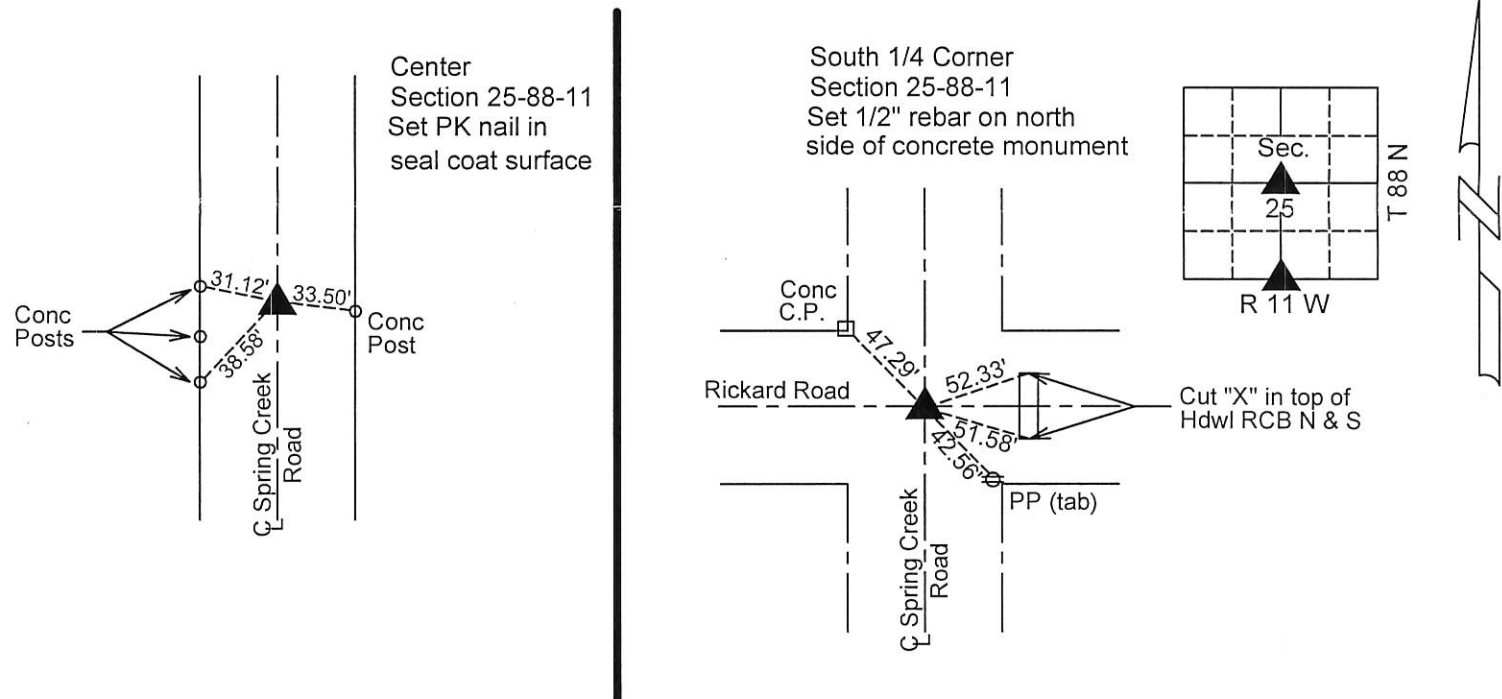
UNITED STATES PUBLIC LAND SURVEY CORNER CERTIFICATE
OF

Land Survey Monuments situated in Section 25, Township 88 N, Range 11 W, of the Fifth Principal Meridian, Black Hawk County, Iowa.
Previously recorded in _____ in County Recorder's Office.

Monument Description and Remarks:
Reason for preparing certificate: Certificates for Center 1/4 and South 1/4 corners are not on file.
Evidence and detailed procedure used to establish corner position: _____
Center - Position established at intersection of N-S 1/4 line and E-W 1/4 line.
South 1/4 Corner - Found concrete monument from County ties.
Monumentation found or placed: Center - Set 3" PK nail in seal coat road surface.
South 1/4 Corner - Found SCM 18" deep; set 1/2" rebar on north side of monument
within 6" of surface.

PLAN-VIEW

(Show a minimum of three reference ties to durable physical objects, relevant monuments and physical conditions that will enable recovery of the corner).



I hereby certify that the survey work was completed and this land surveying document was prepared by me or under my direct personal supervision and that I am a duly licensed land surveyor under the laws of the State of Iowa.

Signature: Brian M. Crawford
BRIAN M. CRAWFORD, PLS

Date: 2-22-16 Reg. No. 17344

My license renewal date is December 31, 2016

SEAL

List Corners to be Indexed			
Corners	Section	Twp.	Range
Center 1/4 Corner	25	88 N	11 W
South 1/4 Corner	25	88 N	11 W
North 1/4 Corner	36	88 N	11 W

