

BRIAN M. CRAWFORD, PLS Crawford Engineering & Surveying, Inc., Independence, Iowa 319/334-7077

UNITED STATES PUBLIC LAND SURVEY CORNER CERTIFICATE
OF

Land Survey Monuments situated in Section 25, Township 88 N, Range 11 W, of the Fifth Principal Meridian, Black Hawk County, Iowa.

Previously recorded in _____ in County Recorder's Office.

Monument Description and Remarks:

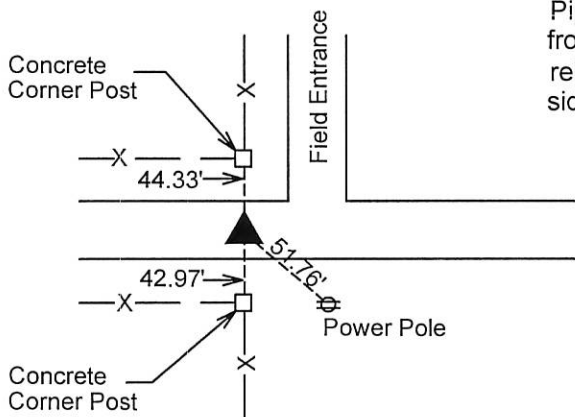
Reason for preparing certificate: Current certificate is not on file.

Evidence and detailed procedure used to establish corner position: Found monument as listed below from WPA notes (1939)

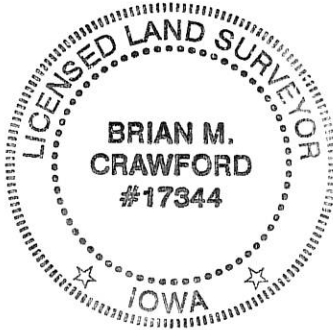
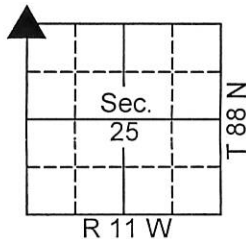
Monumentation found or placed: See notes below

PLAN-VIEW

(Show a minimum of three reference ties to durable physical objects, relevant monuments and physical conditions that will enable recovery of the corner).



NW Corner
Section 25-88-11
Dug and found SCM
Base 18" deep with 2" Dia.
Pipe 30-1/2" long laid over
from WPA notes. Set 1/2"
rebar at middle on north
side of SCM base, 4" deep.



I hereby certify that the survey work was completed and this land surveying document was prepared by me or under my direct personal supervision and that I am a duly licensed land surveyor under the laws of the State of Iowa.

Signature: Brian M. Crawford
BRIAN M. CRAWFORD, PLS

Date: 2-22-16 Reg. No. 17344

My license renewal date is December 31, 2016

Corners	List Corners to be Indexed		
	Section	Twp.	Range
NW Corner	25	88 N	11 W

SEAL