

MISC
INDEX 11
MARGIN
PROOF
COMPARE

FILED FOR RECORD Nov 17, 2000 AT 11:00 A.M., AND RECORDED IN BOOK 341 OF MISC PAGE 55
Catherine A. Lass RECORDER
FEE 1-5.00/
PAUL HELLAND

010602

Paul H. Helland, 1107 Technology Parkway, Cedar Falls, Iowa 50613-6951, (319)-266-0161

UNITED STATES PUBLIC LAND SURVEY CORNER CERTIFICATE OF

LAND SURVEY MONUMENTS SITUATED IN SECTION NO. 25, TOWNSHIP NO. 88 NORTH, RANGE NO. 11 WEST OF THE FIFTH PRINCIPAL MERIDIAN, BLACK HAWK COUNTY, IOWA.
PREVIOUSLY RECORDED IN BOOK _____, PAGE _____.

(SHOW REASON FOR PREPARING THIS CERTIFICATE, THE EVIDENCE AND DETAILED PROCEDURES USED IN ESTABLISHING THE CORNER POSITIONS AND MONUMENTATION FOUND OR PLACED.)

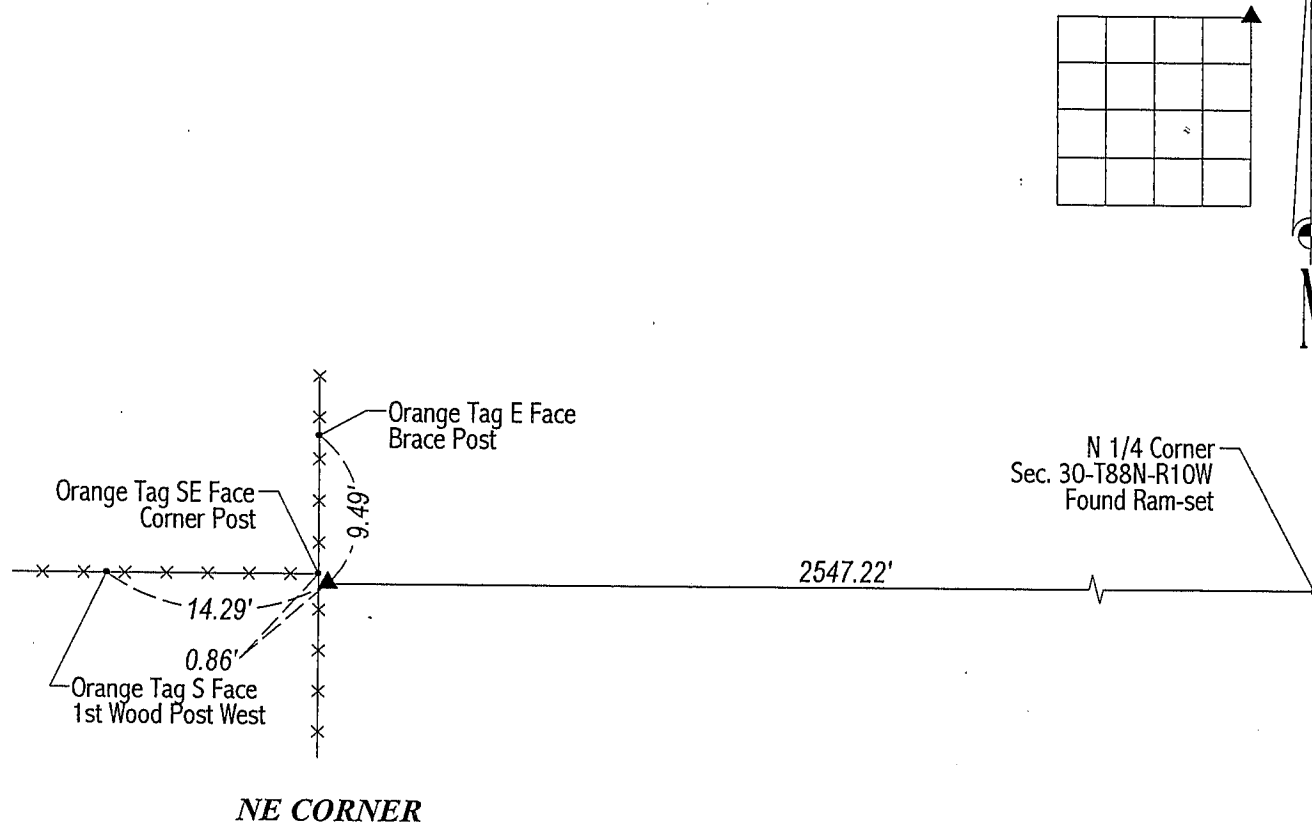
MONUMENT DESCRIPTION AND REMARKS:

SURVEY DONE IN NE 1/4 NW 1/4 OF SEC. 30-T88N-R10W & SE 1/4 SW 1/4 OF SEC. 19-T88N-R10W.

NE CORNER: Found concrete monument w/brass cap per Black Hawk County reference ties. C.M. is 1.5' deep.
Set No. 4 rebar on South side of C.M. for magnetic detection and set No. 4 rebar w/orange cap #6505 above.

PLAN VIEW

(SHOW A MINIMUM OF THREE REFERENCE TIES TO DURABLE PHYSICAL OBJECTS, RELEVANT MONUMENTS AND PHYSICAL CONDITIONS THAT WILL ENABLE RECOVERY OF THE CORNER.)



NE CORNER



HELLAND ENGINEERING & SURVEYING, LTD.
1107 Technology Parkway
Cedar Falls, Iowa 50613-6951
(319)-266-0161

FILE NAME: 00-313C2.DRG



I hereby certify that this land surveying document was prepared and the related survey work was performed by me or under my direct personal supervision and that I am a duly licensed Land Surveyor under the laws of the State of Iowa.

Paul H. Helland 11/8/00
Paul H. Helland
License Number 6505
My license renewal date is December 31, 2001.
All pages or sheets are covered by this seal except:

CORNER	SECTION	TOWNSHIP	RANGE
NE CORNER	25	88N	11W