

*Prepared by: Brian M. Crawford, PLS

Crawford Engineering & Surveying, Inc., Independence, Iowa

319/334-7077

UNITED STATES PUBLIC LAND SURVEY CORNER CERTIFICATE

OF

Land Survey Monuments situated in Section 25, Township 88 N, Range 11 W, of the Fifth Principal Meridian, Black Hawk County, Iowa.

Previously recorded in in County Recorder's Office.

Monument Description and Remarks:

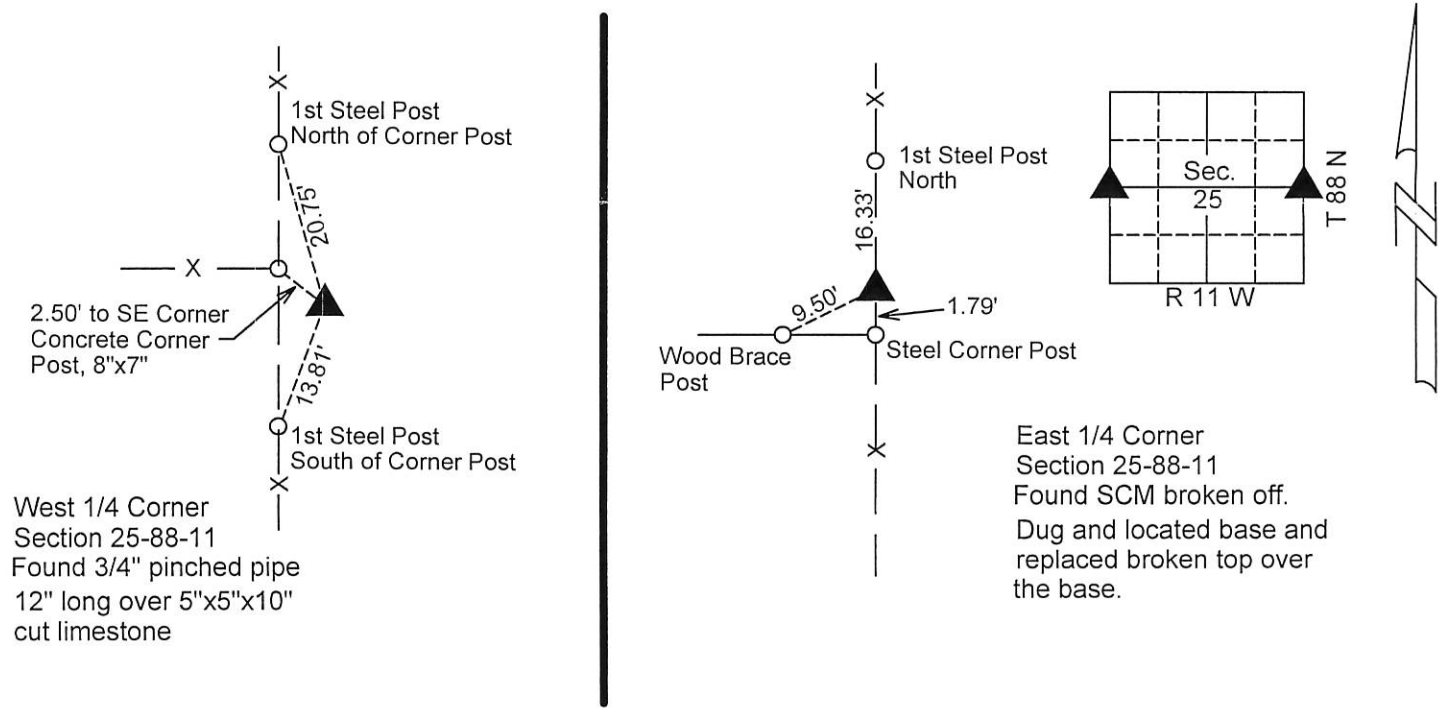
Reason for preparing certificate: Current certificate is not on file.

Evidence and detailed procedure used to establish corner position: Found existing corner monuments as listed below.

Monumentation found or placed: See description below.

PLAN-VIEW

(Show a minimum of three reference ties to durable physical objects, relevant monuments and physical conditions that will enable recovery of the corner).



I hereby certify that the survey work was completed and this land surveying document was prepared by me or under my direct personal supervision and that I am a duly licensed land surveyor under the laws of the State of Iowa.

Signature: Brian M. Crawford

BRIAN M. CRAWFORD, PLS

Date: 2-22-16 Reg. No. 17344

My license renewal date is December 31, 2016

SEAL

List Corners to be Indexed			
Corners	Section	Twp.	Range
East 1/4 Corner	25	88 N	11 W
West 1/4 Corner	25	88 N	11 W

