

UNITED STATES PUBLIC LAND SURVEY CORNER CERTIFICATE OF

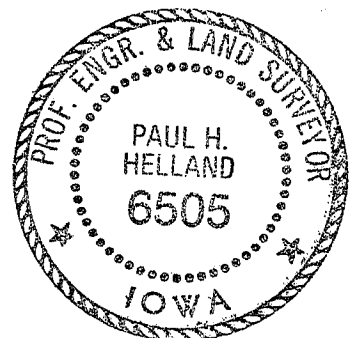
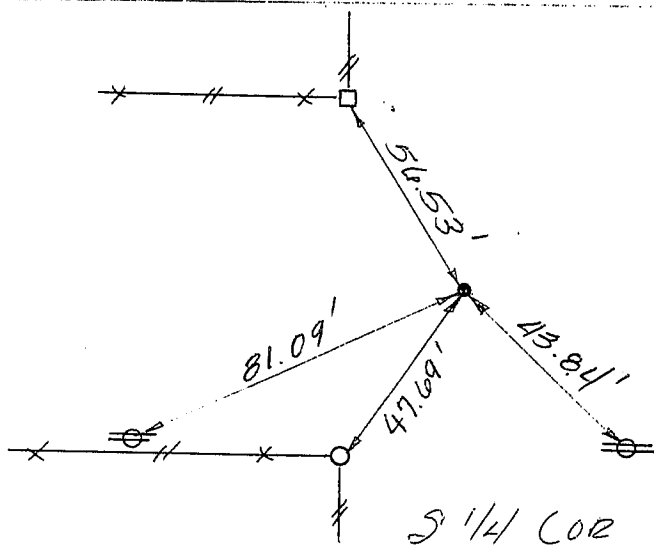
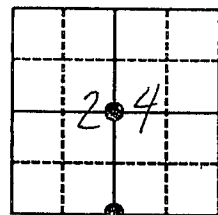
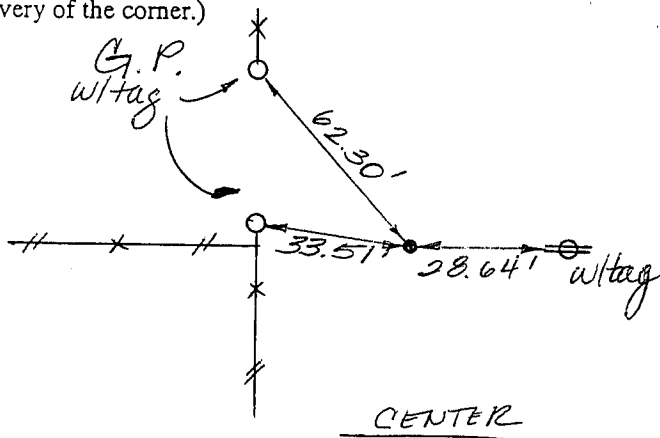
Land Survey Monuments situated in Section 24, Township 88, Range 11, of the Fifth Principal Meridian, Black Hawk County, Iowa.
Previously recorded in Book 292, Page 750. (CENTER CORNER)

(Show reason for preparing this certificate, the evidence and detailed procedures used in establishing the corner positions and monumentation found or placed.)

Monument Description and Remarks: Survey done in SE 1/4 Sec. 24.
Center → Fo. 1/2" Rebar w/flagging (flush)
SE 1/4 → Fo. Pin w/smashed yellow cap 0.5' deep

PLAN - VIEW

(Show a minimum of three reference ties to durable physical objects, relevant monuments and physical conditions that will enable recovery of the corner.)



96-142

I HEREBY CERTIFY THAT THIS PLAT, MAP, SURVEY OR REPORT WAS MADE BY ME OR UNDER MY DIRECT PERSONAL SUPERVISION AND THAT I AM A DULY REGISTERED LAND SURVEYOR UNDER THE LAWS OF THE STATE OF IOWA.
Paul H. Helland DATE 3/14/96
PAUL H. HELLAND, P.E. & R.L.S. IOWA REGISTRATION NO. 6505
MY REGISTRATION EXPIRES DECEMBER 31, 1997

HES

HELLAND ENGINEERING & SURVEYING, LTD.

THUNDER RIDGE BANK BUILDING
2322 WEST 1ST ST., SUITE B
CEDAR FALLS, IOWA 50613
319-266-0161

List Corners to be Indexed

Corners	Section	Twp	Range
CENTER	24	88	11
SE 1/4			

MISC. BK 319 p. 878