

HELLAND ENGINEERING & SURVEYING 1107 TECHNOLOGY PKWY CEDAR FALLS IA 50613

Paul H. Helland, 1107 Technology Parkway, Cedar Falls, Iowa 50613-6951, (319)-266-0161

UNITED STATES PUBLIC LAND SURVEY CORNER CERTIFICATE OF

LAND SURVEY MONUMENTS SITUATED IN SECTION NO. 24, TOWNSHIP NO. 88 NORTH, RANGE
NO. 11 WEST OF THE FIFTH PRINCIPAL MERIDIAN, BLACK HAWK COUNTY, IOWA.

PREVIOUSLY RECORDED IN BOOK 292, PAGE 752 (*N 1/4 CORNER*)

(SHOW REASON FOR PREPARING THIS CERTIFICATE, THE EVIDENCE AND DETAILED PROCEDURES USED IN ESTABLISHING THE
CORNER POSITIONS AND MONUMENTATION FOUND OR PLACED.)

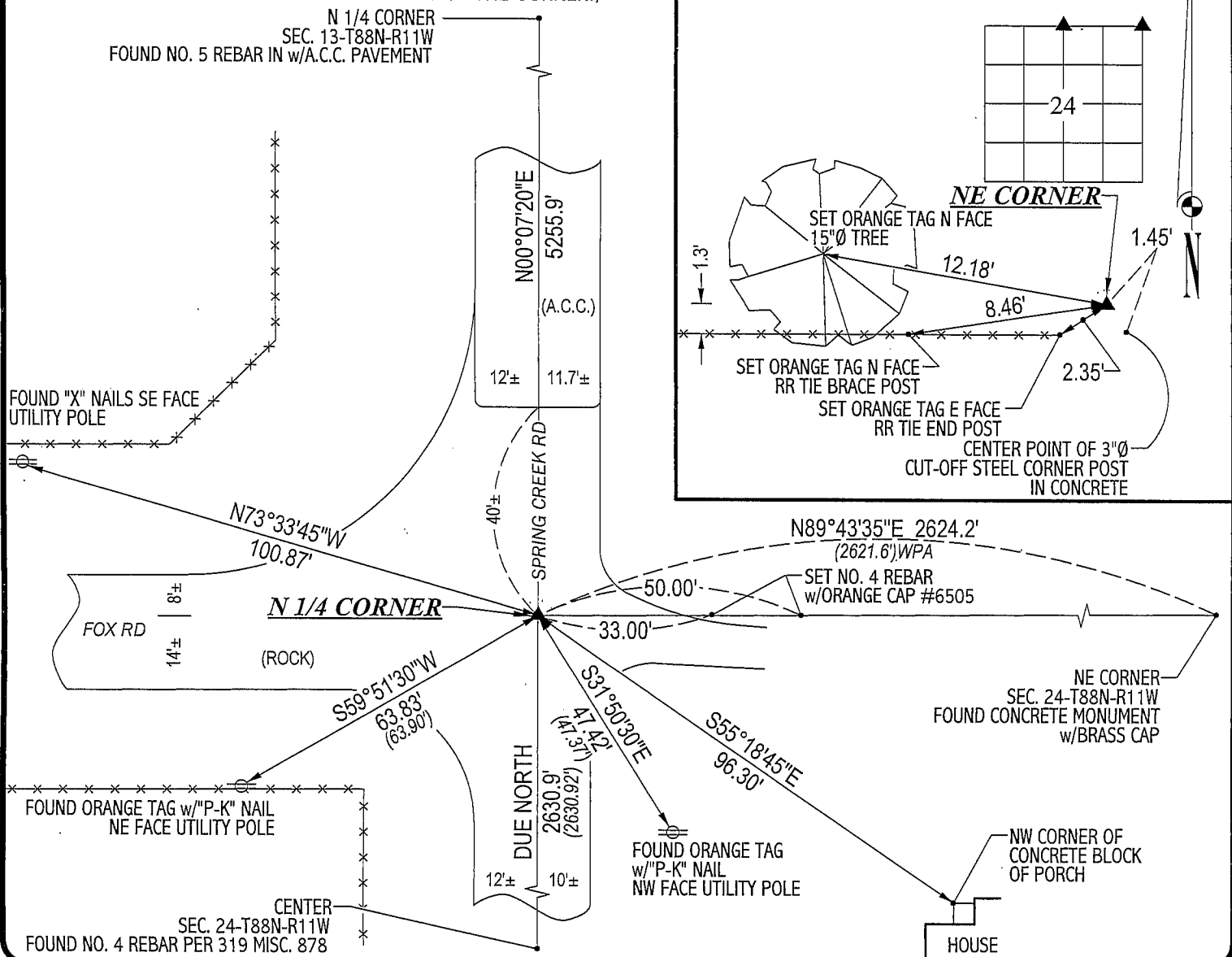
MONUMENT DESCRIPTION AND REMARKS:

NO CORNER CERTIFICATE ON FILE FOR NE CORNER. CORNER CERTIFICATE PER 292 MISC. 752 FOR N 1/4 CORNER, MONUMENTATION &
TIES HAVE CHANGED. SURVEY DONE IN SE 1/4 OF SEC. 13-T88N-R11W & NE 1/4 OF SEC. 24-T88N-R11W.

- N 1/4 CORNER: 292 MISC. 752 CALLS FOR "FOUND NAIL". FOUND SMALL MASONRY NAIL ABOVE A NO. 4 REBAR. NO. 4 REBAR CORRESPONDS
TO BLACK HAWK COUNTY ENGINEER REFERENCE TIES (NO DATE). NO. 4 REBAR IS 0.5' DEEP.
- NE CORNER: BLACK HAWK COUNTY ENGINEER REFERENCE TIES (NO DATE) CALLS FOR A CONCRETE MONUMENT. STARTED EXCAVATION NW OF
STEEL CORNER POST (CUT-OFF). FOUND TOP 1.6' OF BROKEN OFF CONCRETE MONUMENT w/BRASS CAP 0.9' DEEP LYING ON IT'S SIDE.
CONTINUED EXCAVATION TO FIND BOTTOM OF CONCRETE MONUMENT. LOWERED BOTTOM SECTION OF C.M. AND PLACED TOP SECTION OF C.M.
ON TOP. REINFORCED C.M. w/NO. 4 REBARS ON ALL FOUR SIDES. TOP OF C.M. IS 0.1' BELOW TOP OF CUT-OFF STEEL CORNER POST
IN CONCRETE.

PLAN VIEW

(SHOW A MINIMUM OF THREE REFERENCE TIES TO DURABLE PHYSICAL OBJECTS, RELEVANT MONUMENTS AND PHYSICAL
CONDITIONS THAT WILL ENABLE RECOVERY OF THE CORNER.)



HELLAND ENGINEERING & SURVEYING, LTD.
1107 Technology Parkway
Cedar Falls, Iowa 50613-6951
(319)-266-0161

(00.00) - RECORDED AS

FILE NAME: 02-306C1.DRG



I hereby certify that this land surveying document was prepared
and the related survey work was performed by me or under my
direct personal supervision and that I am a duly licensed Land
Surveyor under the laws of the State of Iowa.

Paul H. Helland 10/3/02
Paul H. Helland
License Number 6505
My license renewal date is December 31, 2003.
All pages or sheets are covered by this seal except:

LIST CORNERS TO BE INDEXED

CORNER	SECTION	TOWNSHIP	RANGE
N 1/4 CORNER	24	88N	11W
NE CORNER	24	88N	11W

Rec