

DANIEL T. CRAWFORD, P.E. & L.S.

* Crawford Engineering & Surveying, Inc., Independence, Iowa 319/334-7077

UNITED STATES PUBLIC LAND SURVEY CORNER CERTIFICATE

OF

Land Survey Monuments situated in Section 23, Township 88 N, Range 11 W, of the Fifth Principal Meridian, Black Hawk County, Iowa.

Previously recorded in N/A in County Recorder's Office.

Monument Description and Remarks:

Reason for preparing certificate: Current certificate is not on file.

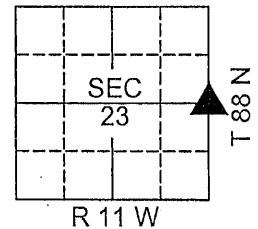
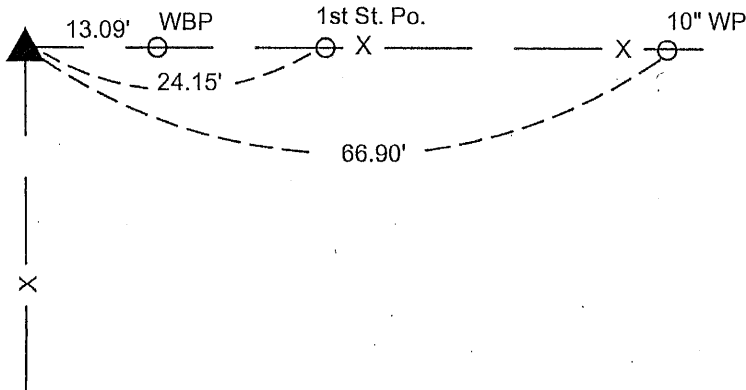
Evidence and detailed procedure used to establish corner position: Corner position established from WPA notes and local evidence. WPA SCM position likely obliterated during 1970's channel/straightening of stream.

Monumentation found or placed: Found sandstone and granite stone beside WCP.

PLAN-VIEW

(Show a minimum of three reference ties to durable physical objects, relevant monuments and physical conditions that will enable recovery of the corner).

East 1/4 Corner
Section 23-88-11
Fd. RR Tie WCP beside sandstone and granite stone
Set 1/2" rebar w/ypc #8812



I hereby certify that the survey work was completed and this land surveying document was prepared by me or under my direct personal supervision and that I am a duly licensed land surveyor under the laws of the State of Iowa.

Signature: Daniel T. Crawford
DANIEL T. CRAWFORD, P.E. & L.S.

Date: 6-3-2010 Reg. No. 8812

My license renewal date is December 31, 2011

SEAL



Corners	List Corners to be Indexed		
	Section	Twp.	Range
East 1/4 Corner	23	88 N	11 W

9-00' as