

Doc ID: 004611990001 Type: GEN
 Kind: CORNER
 Recorded: 10/24/2011 at 10:45:22 AM
 Fee Amt: \$7.00 Page 1 of 1
 Black Hawk County Iowa
 JUDITH A MCCARTHY RECORDER
 File **2012-00007322**

EW
 WAYNE CLAASSEN ENGINEERING AND SURVEYING, INC.
 P.O. BOX 898 WATERLOO, IOWA 50704-0898

PHONE: (VOICE) 319-235-6294
 (FAX) 319-235-0028

UNITED STATES PUBLIC LAND SURVEY CORNER CERTIFICATE

Land Survey Monuments situated in Section 23, Township 88 North, Range 11 West, of the Fifth Principal Meridian, Black Hawk County, Iowa.

Previously recorded in _____ in County Recorder's Office.
 (book, page, document number, etc.)

Monument Description and Remarks

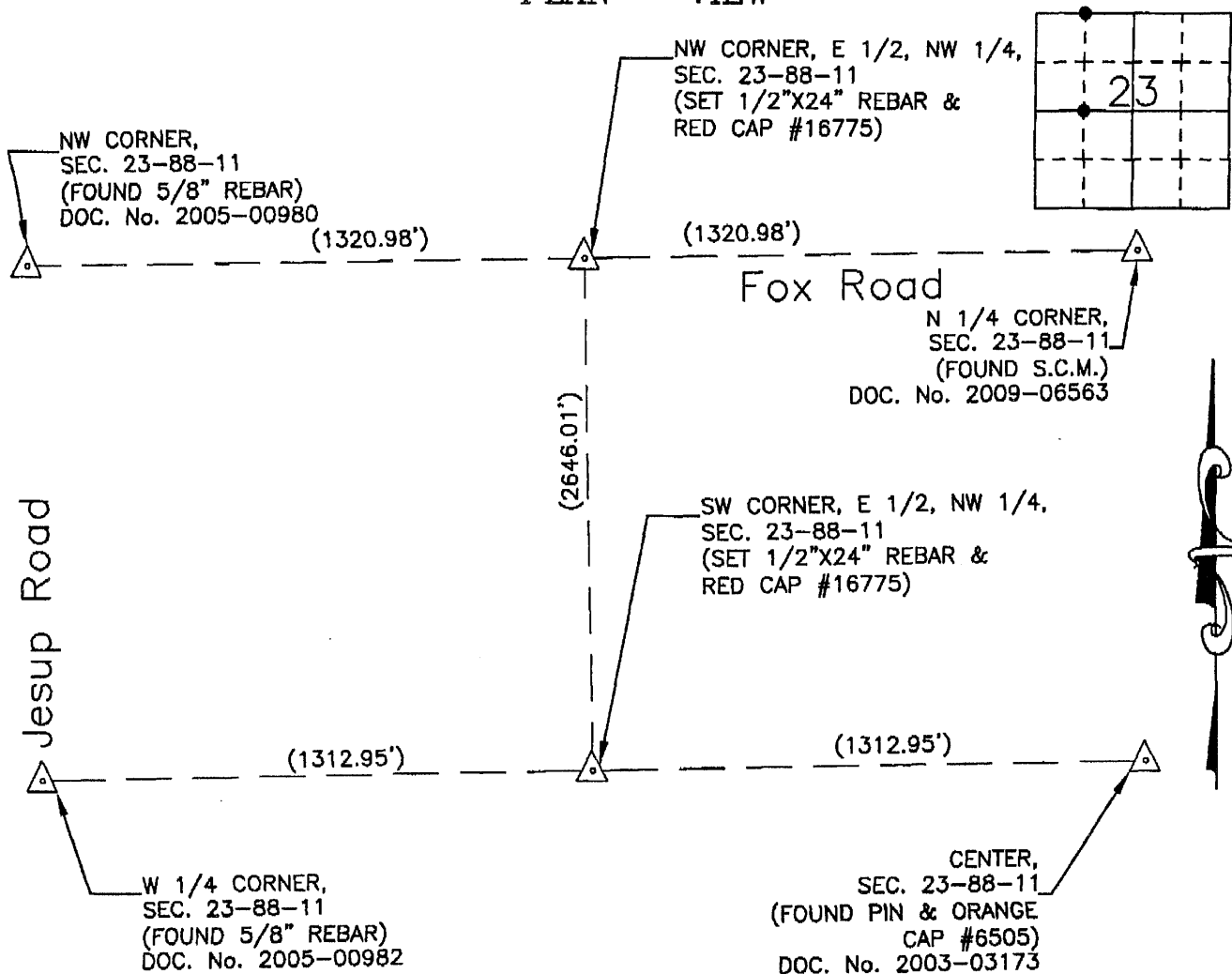
SW CORNER, E 1/2, NW 1/4:

Set 1/2"x24" Rebar & red cap #16775 at midpoint between center and the West 1/4 Corner.

NW CORNER, E 1/2, NW 1/4:

Set 1/2"x24" Rebar & red cap #16775 at midpoint between NW Corner and the North 1/4 Corner. This certificate was filed because there is no certificate on file.

PLAN - VIEW



I hereby certify that this land surveying document was prepared and the related survey work was performed by me or under my direct personal supervision and that I am a duly Licensed Land Surveyor under the laws of the State of Iowa.

Signature: *David L. Schell*
 David L. Schell, L.S.

Date: OCT 20 2011 Lic. No. 16775

Pages or Sheets Covered by this Seal: THIS SHEET ONLY.

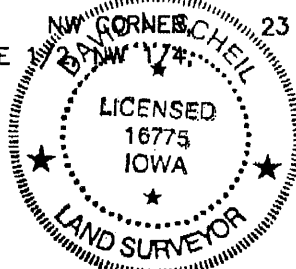
My license renewal date is December 31, 2012

SEAL

List Corners to be Indexed

Corners	Section	Twp	Range
SW CORNER, E 1/2, NW 1/4,	23	88 N	11 W

NW CORNER, E 1/2, NW 1/4,	23	88 N	11 W
---------------------------	----	------	------



2400 ✓

(7.00)

1