

PROOF *PH*

FILED FOR RECORD AUG 1, 2002, AT 4:00 P.M. FEE 1-5.00/

COMPARED

BLACK HAWK COUNTY RECORDER

HELLAND ENGINEERING & SURVEYING LTD

Paul H. Helland, 1107 Technology Parkway, Cedar Falls, Iowa 50613-6951, (319)-266-0161

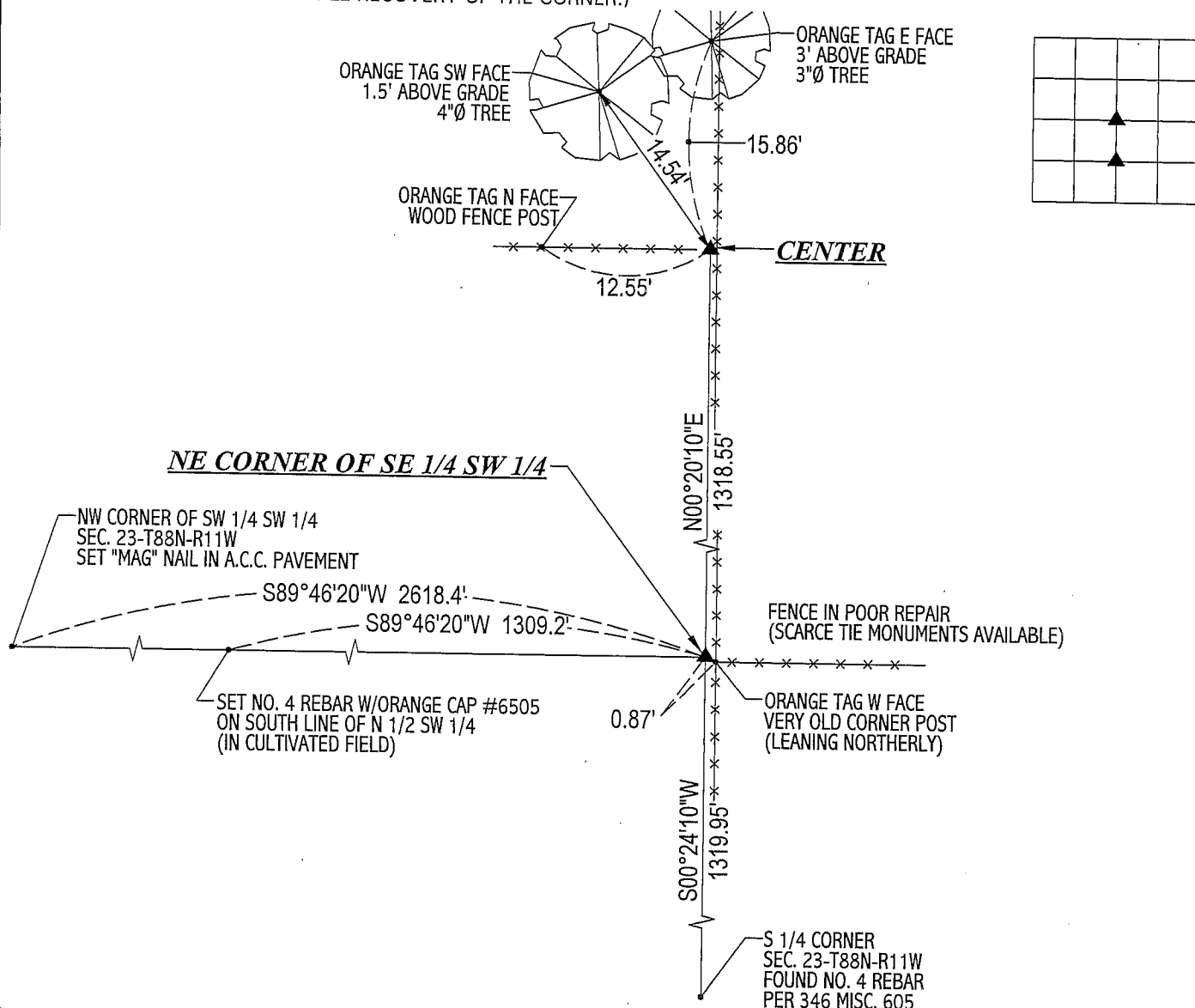
UNITED STATES PUBLIC LAND SURVEY CORNER CERTIFICATE
OFLAND SURVEY MONUMENTS SITUATED IN SECTION NO. 23, TOWNSHIP NO. 88 NORTH, RANGE
NO. 11 WEST OF THE FIFTH PRINCIPAL MERIDIAN, BLACK HAWK COUNTY, IOWA.
PREVIOUSLY RECORDED IN BOOK _____, PAGE _____.(SHOW REASON FOR PREPARING THIS CERTIFICATE, THE EVIDENCE AND DETAILED PROCEDURES USED IN ESTABLISHING THE
CORNER POSITIONS AND MONUMENTATION FOUND OR PLACED.)

MONUMENT DESCRIPTION AND REMARKS:

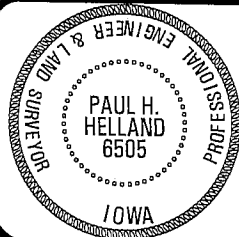
NO CORNER CERTIFICATE ON FILE. SURVEY DONE IN SW 1/4 OF SEC. 23-T88N-R11W.

CENTER: NO COUNTY ENGINEER REFERENCE TIES EXIST. FOUND VERY OLD CORNER POST W/ROTTED BASE (LEANING WESTERLY).
EXCAVATED AROUND CORNER POST FOR STONE OR OTHER EVIDENCE, NO STONE FOUND. SET NO. 4 REBAR W/ORANGE CAP #6505 AT
BASE OF SAID CORNER POST WHERE POST WOULD BE IF UPRIGHT.NE CORNER OF SE 1/4 SW 1/4: NO COUNTY ENGINEER REFERENCE TIES EXIST. STARTED EXCAVATION @ VERY OLD CORNER POST.
FOUND 5"x6" (TOP VIEW)x20"± DEEP LIMESTONE WEST OF SAID CORNER POST. TOP OF LIMESTONE IS 1.2' DEEP, SET NO. 4 REBAR W/ORANGE
CAP #6505 ABOVE CENTER OF STONE. SET "T-POST" WEST OF NO. 4 REBAR.

PLAN VIEW

(SHOW A MINIMUM OF THREE REFERENCE TIES TO DURABLE PHYSICAL OBJECTS, RELEVANT MONUMENTS AND PHYSICAL
CONDITIONS THAT WILL ENABLE RECOVERY OF THE CORNER.)HELLAND ENGINEERING & SURVEYING, LTD.
1107 Technology Parkway
Cedar Falls, Iowa 50613-6951
(319)-266-0161

FILE NAME: 02-223C1.DRG

I hereby certify that this land surveying document was prepared
and the related survey work was performed by me or under my
direct personal supervision and that I am a duly licensed Land
Surveyor under the laws of the State of Iowa.Paul H. Helland
License Number 6505
My license renewal date is December 31, 2003.
All pages or sheets are covered by this seal except:

LIST CORNERS TO BE INDEXED			
CORNER	SECTION	TOWNSHIP	RANGE
CENTER	23	88N	11W
NE CORNER SE 1/4 SW 1/4	23	88N	11W