

PROOF FILED FOR RECORD JUL 12, 2004, AT 3:00 P.M. FEE N/C

COMPARED

Christina S. Liss

BLACK HAWK COUNTY RECORDER

BLACK HAWK COUNTY ENGINEER

PREPARED BY: BLACK HAWK COUNTY ENGINEERS OFFICE
316 E. FIFTH STREET, ROOM 211 WATERLOO, IOWA 50703PH.# (319) 833-3008
FAX.# (319) 833-3139SLSI 9-94
CERT 12-96

UNITED STATES PUBLIC LAND SURVEY CORNER CERTIFICATE OF
Land Survey Monuments situated in Section 22, Township 88 N,
Range 11 W, of the Fifth Principal Meridian, BLACK HAWK County, Iowa.
Previously recorded in Fee Book 2003, Page 03174, in County Recorder's Office.

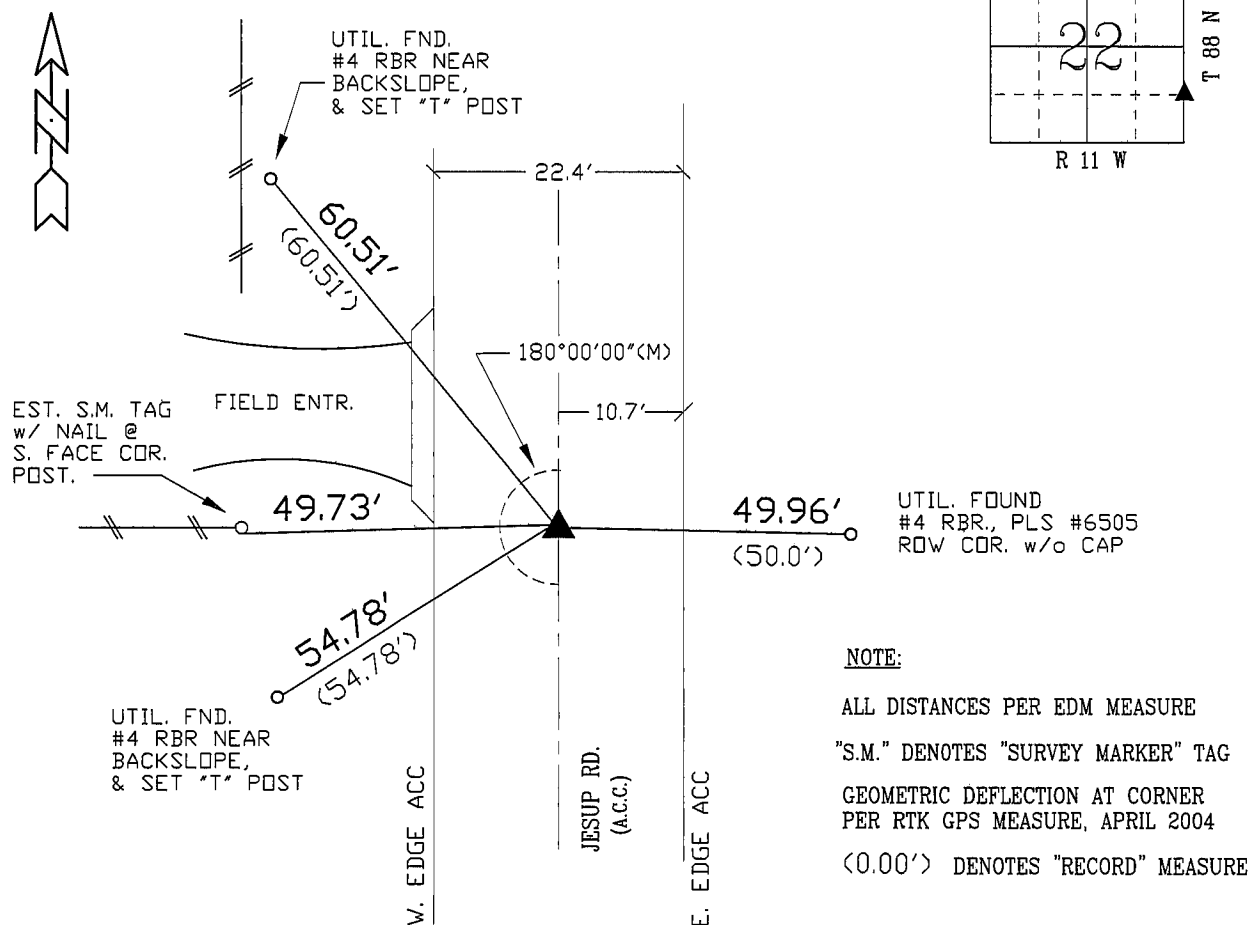
(Show reason for preparing this certificate, the evidence and detailed procedures used in establishing the corner positions and monumentation found or placed.)

Monument Description and Remarks: FND. MAG NAIL PRIOR TO RESURFACING.
RE-EST. #5 RBR x 5" L. FLUSH w/ ACC SURFACE, BEING ALIGNED WITH
FENCE TO WEST AND LOCATED 0.60' E. OF C.L. ACC JOINT.
CORNER LOCATED ON E. LINE OF S.E. 1/4, PER RTK GPS MEASURE DENOTED.
CORNER UPDATED DUE TO ACC RESURFACING PROJECT, MAY 2004.

PLAN - VIEW

(Show a minimum of three reference ties to durable physical objects, relevant monuments and physical conditions that will enable recovery of the corner.)

NOT TO SCALE



NOTE:

ALL DISTANCES PER EDM MEASURE

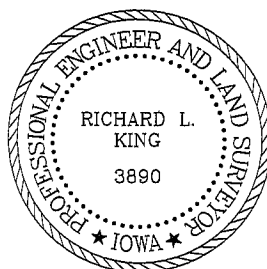
"S.M." DENOTES "SURVEY MARKER" TAG

GEOMETRIC DEFLECTION AT CORNER
PER RTK GPS MEASURE, APRIL 2004

<0.00'> DENOTES "RECORD" MEASURE

FIELD SURVEY: G.T. & K.E. 06/03/04
PREPARED BY: G. TINKER 07/09/04

CERTIFICATION



I hereby certify that this land surveying document
was prepared and the related survey work was
performed by me or under my direct personal
supervision and that I am a duly licensed Land
Surveyor under the laws of the State of Iowa.

Richard L. King (date)
Richard L. King

License Number 3890

My license renewal date is December 31, 2005

Pages or sheets covered by this seal:

This Land Corner Certificate Only.

LIST CORNERS TO BE INDEXED

Corner	Section	Township	Range
N.E. COR	22	88 N	11 W
SE1/4-SE1/4			
N.W. COR	23	88 N	11 W
SW1/4-SW1/4			