

SC
MISC
INDEX
MARGIN
PROOF
COMPARE

BLACK HAWK COUNTY IOWA:SS
Filed for record Jan 14, 2000 at 12:30 P.M. and recorded in Book 336 of MISC. Page 940
Richard G. Ehke RECORDER
FEE 1-5.00

The Schemmer Associates
3705 Utica Ridge Rd
Bettendorf IA 52722-1623
3705 Utica Ridge Road Bettendorf, IA 52722 (319) 344-0774

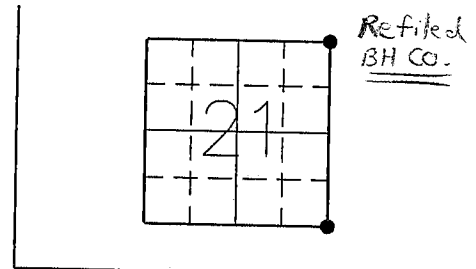
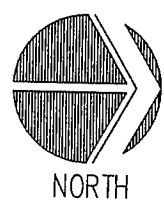
Richard G. Ehke, L.S. The Schemmer Associates

UNITED STATES PUBLIC LAND SURVEY CORNER CERTIFICATE
OF

Land Survey Monuments situated in Section 21, Township 88 NORTH, Range 11 WEST, of the Fifth Principal Meridian, BLACK HAWK County, Iowa.
Previously recorded in _____ in County Recorder's Office.
(book, page, document number, etc.)

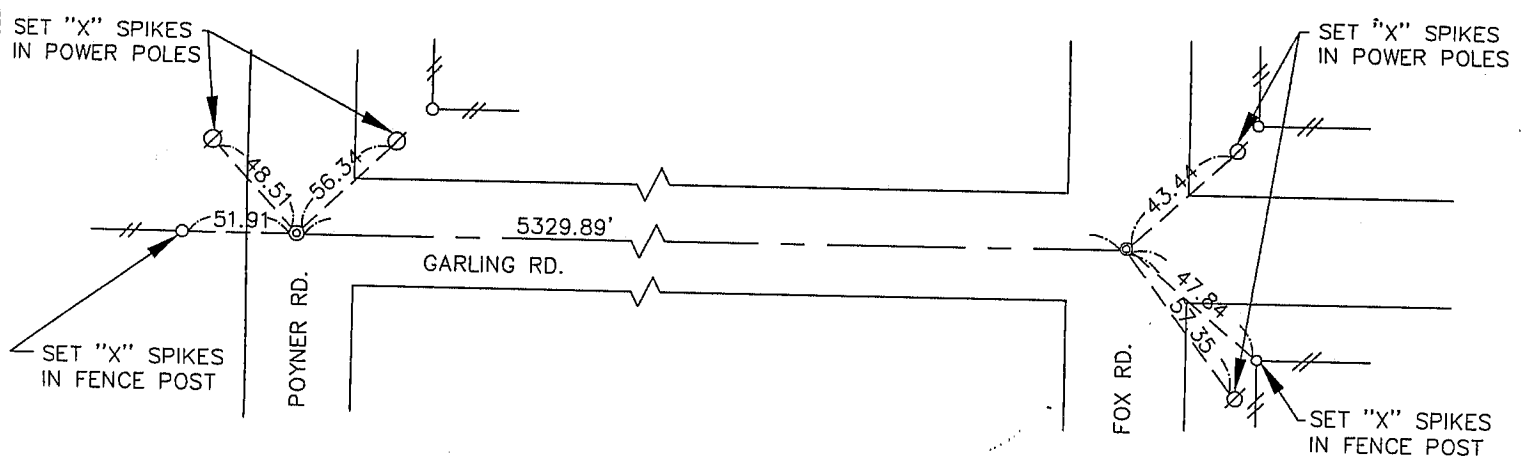
Monument Description and Remarks SE CORNER-FOUND 5/8" REBAR IN PAVING, AND SET THREE NEW TIES.
NE CORNER-FOUND 60 P NAIL, 1' DEEP, AND SET THREE NEW TIES. (Revised)

PLAN-VIEW



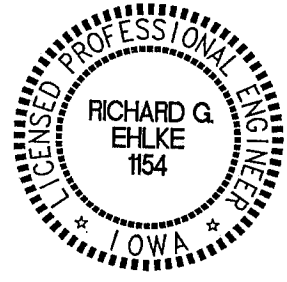
SE CORNER OF SECTION 21

NE CORNER OF SECTION 21



I hereby certify that the survey work was completed and this certificate was prepared by me or under my direct personal supervision and that I am a duly registered land surveyor under the laws of the state of Iowa.

Signature: *Richard G. Ehke*
Richard G. Ehke
Date: *Jan. 11, 2000* Reg. No. 11554
My license expires 12-31-2000



Corners	List Corners to be Indexed		
	Section	Twp	Range
SE	21	88N	11W
NE	21	88N	11W