

2024-25086  
RECORDED: 12/19/2024 11:47:29 AM  
RECORDING FEE: \$7.00  
REVENUE TAX: \$  
COMBINED FEE: \$7.00  
SANDIE L. SMITH, RECORDER  
BLACK HAWK COUNTY, IOWA

Prepared By Lawrence G Crawford, PE & PLS      Crawford Engineering & Surveying, Inc , Independence, Iowa      319/334-7077  
PO Box 793  
UNITED STATES PUBLIC LAND SURVEY CORNER CERTIFICATE  
Land Survey Monuments situated in Section 19, Township 88 North, Range 11W, of the Fifth Principal Meridian,  
Black Hawk County, Iowa Previously recorded in Misc Bk 334, Pg 686 in County Recorder's Office

Monument Description and Remarks

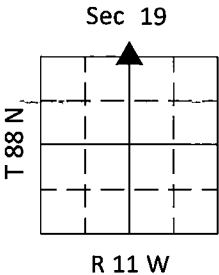
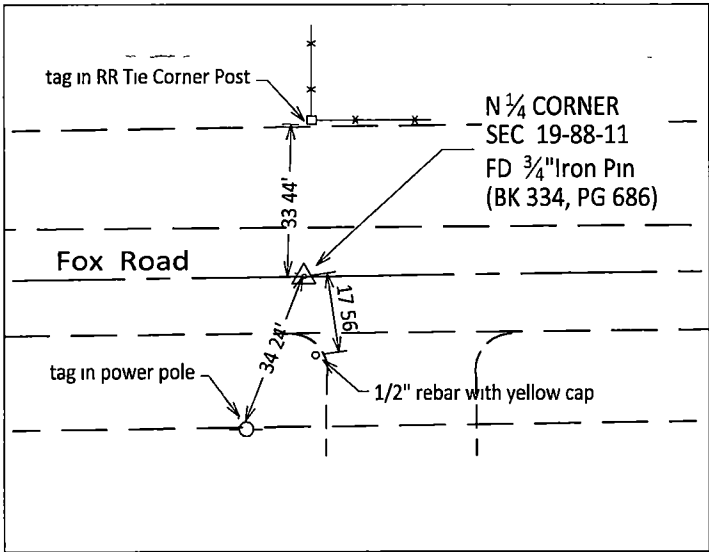
Reason for preparing certificate Corner tie references no longer exist.

Evidence and detailed procedure used to establish corner position

N 1/4 Corner - Sec 19 -- Conducted corner search in vicinity of the N 1/4 Corner of Section 19 Found monument described in Ref Tie Bk 334, Pg 686, 0 1 ft deep The corner monument is a 3/4" iron pin

PLAN-VIEW

(Show a minimum of three reference ties to durable physical objects, relevent monuments and physical conditions that will enable recovery of the corner)



I hereby certify that this land surveying document was prepared and related survey work was performed by me or under my direct personal supervision and that I am a duly licensed land surveyor under the laws of the state of Iowa  
License renewal date 12-31-2026 License No 11572  
*Lawrence G. Crawford* 12-16-24  
Lawrence G Crawford PE & PLS DATE  
SEAL

List Corners to be Indexed			
Corner	Section	Twp	Range
North 1/4 Corner	19	88N	11W
South 1/4 Corner	18	88N	11W