

File **2012-00005425**

SLSI 9-94
BHC0 03-09

Land Survey Monuments situated in Section 19 , Township 88 N ,
Range 11 W , of the Fifth Principal Meridian, BLACK HAWK County, Iowa.
Previously recorded in Misc Book N/A, Page N/A , in County Recorder's Office.
(Show reason for preparing this certificate): The corner monument has been Replaced or Modified, per Ia. Code 355.11(1)(c)

(Evidence and detailed procedures used in establishing the corner position(s) and monumentation found or placed.)

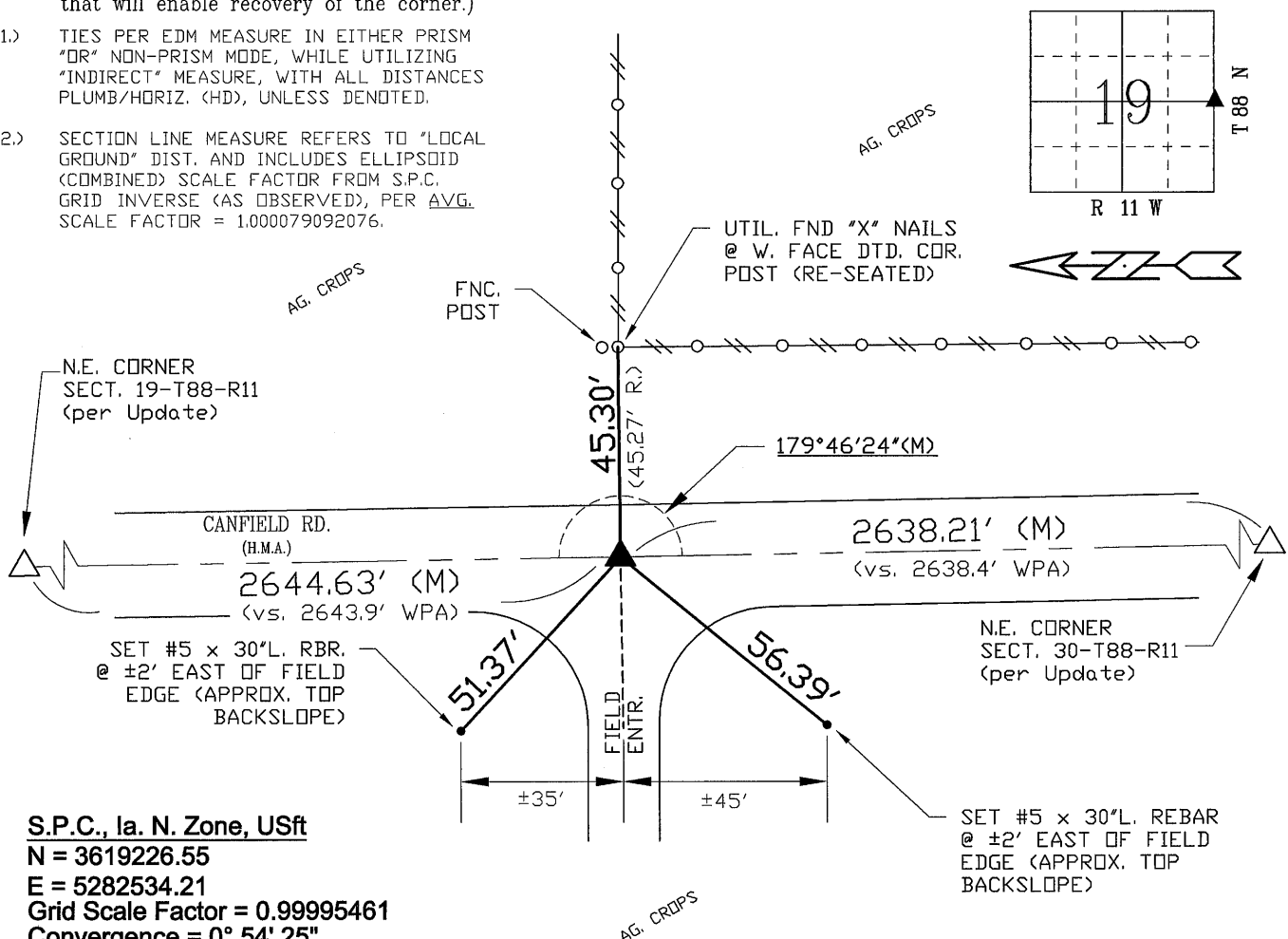
CORNER RESET FOR COLD-IN-PLACE RECYCL. & H.M.A. RESURF. PROJECT LFM-121--7X-07,
PRIOR TO RESURF. PROJECT, FOUND 1/2" REBAR w/ NO COR. CERT. OF RECORD & REF. HIST.
B.H. CO. ENG. TIES (ONLY ONE TIE REMAINED, DTD. 1984). TEMP. REF. COR. LOC. PER RTK
GPS. AFTER 4" DP. MILL (RECYCLE), SOUNDING REMAINED @ COR. LOCATION. EXCAVATED
ADDITIONAL -0.80' DP. TO A.C.C. PAVEMENT (SOLID), w/SOUNDING STILL REMAINING & w/o
FURTHER EXCAVATION @ LOCATION. FILLED PRIOR TO FINAL 3" DP. HMA PVMT. OVERLAY,
THEN RESET CORNER w/ 5/8" (#5) x ±6" L. REBAR & LOCATED 0.10' EAST OF C.L. HMA
PVMT. AND ALIGNED @ ±1' N. OF EXIST. FENCE TO EAST. DELF. (CORNER) ANGLE DENOTED
FOR SECTION LINE TO N./S. PER COGO OF RTK GPS MEAS. CORNERS (AS OBSERVED).

"NOT TO SCALE"

FIELD BOOK: Ties per Topcon 7003i #Z0115

(Show a minimum of three reference ties to durable physical objects, relevant monuments and physical conditions that will enable recovery of the corner.)

- 1.) TIES PER EDM MEASURE IN EITHER PRISM "OR" NON-PRISM MODE, WHILE UTILIZING "INDIRECT" MEASURE, WITH ALL DISTANCES PLUMB/HORIZ. (HD), UNLESS DENOTED.
- 2.) SECTION LINE MEASURE REFERS TO "LOCAL GROUND" DIST. AND INCLUDES ELLIPSOID (COMBINED) SCALE FACTOR FROM S.P.C. GRID INVERSE (AS OBSERVED), PER AVG. SCALE FACTOR = 1.000079092076.



S.P.C., Ia. N. Zone, USft
N = 3619226.55
E = 5282534.21
Grid Scale Factor = 0.99995461
Convergence = 0° 54' 25"
(NAD83-2007 "BHco07", RTK Obs.)

FIELD SURVEY: G.T., L.G., & T.K. 7/29/11

PREPARED BY: L.G., S.S., & G.T. 9/26/11

I hereby certify that this land surveying document was prepared and the related survey work was performed by me or under my direct personal supervision and that I am a duly licensed Land Surveyor under the laws of the State of Iowa.

Geoffrey Allen Tinker 9/26/2011
(date)

License Number 15748

My license renewal date is December 31, 2012

Pages or sheets covered by this seal:

This Land Corner Certificate Only.



<u>Corner</u>	<u>Section</u>	<u>Township</u>	<u>Range</u>
E. 1/4 Cor.	19	88 N	11 W
W. 1/4 Cor.	20	88 N	11 W

INDEX OF ABBREVIATIONS

(M) = "Measured" Dimension "NP" = Reflectorless EDM Meas.
(P) = "Platted" Dimension "MLM" = Indirect Measure
(R) = "Record" Dimension "CM" = Concrete Monument
(C) = "Calculated" Dimension "SM" = Survey Marker Spike/Tag
"IGS" = Iowa Geodetic Survey "PK" = PK/MAG Nail Brand Style
"WPA" = Works Progress Admin. Survey
"G" = per George Miller Survey (BHC Surveyor 1858-1860)
"B" = per John Ball Survey (BHC Surveyor 1866-1891)
"N" = per Nathan Barber Survey (BHC Surveyor 1908-1931)