

## UNITED STATES PUBLIC LAND SURVEY CORNER CERTIFICATE OF

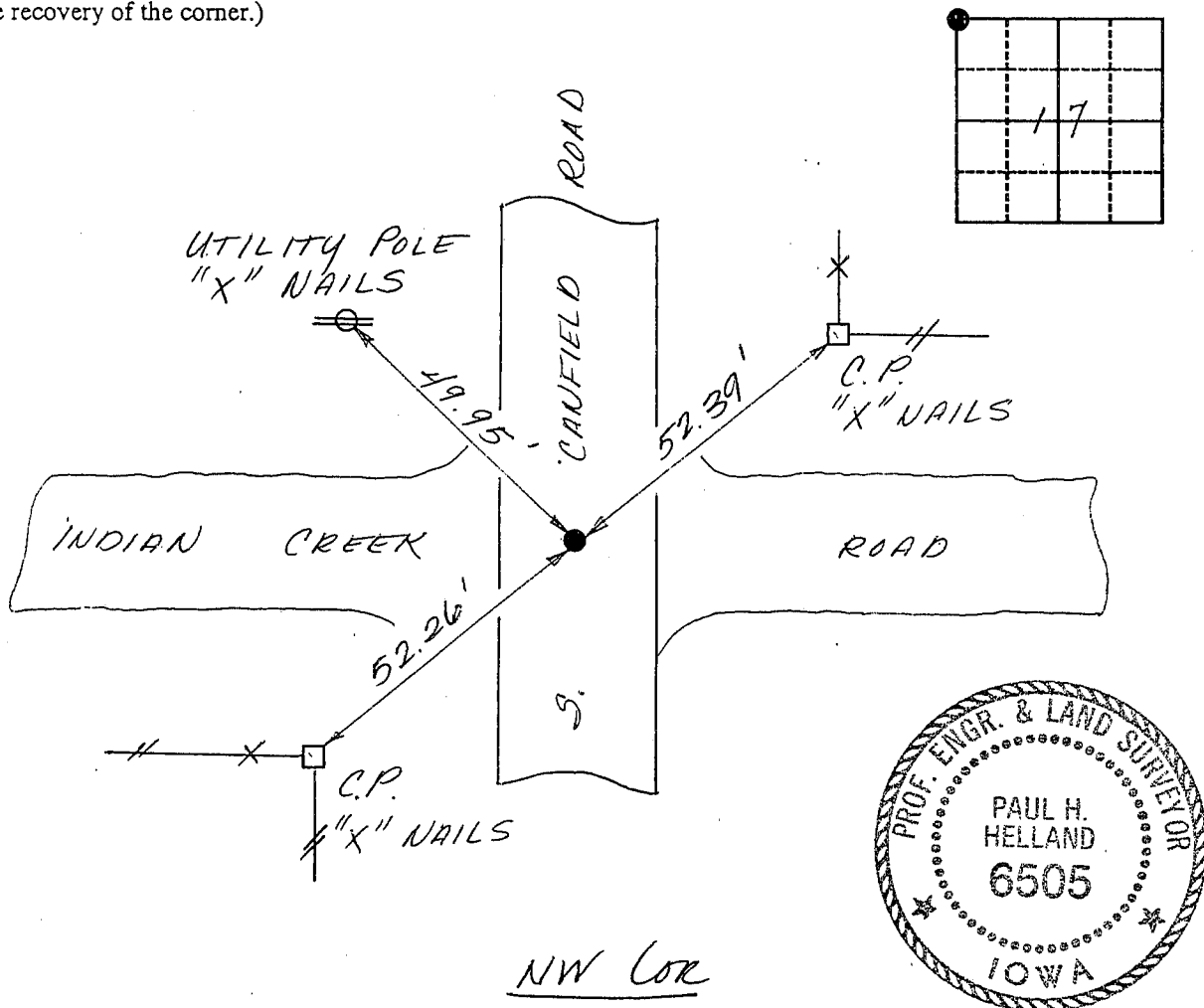
Land Survey Monuments situated in Section 17, Township 88, Range 11, of the Fifth Principal Meridian, BLACK HAWK County, Iowa.  
Previously recorded in Book 295, Page 391.

(Show reason for preparing this certificate, the evidence and detailed procedures used in establishing the corner positions and monumentation found or placed.)

Monument Description and Remarks: Survey done in SE 1/4 SE 1/4  
Sec. 7-88-11  
NW COR (Sec. 17) - FOUND 5/8" Ø REBAR IN A.C. MAT

### PLAN - VIEW

(Show a minimum of three reference ties to durable physical objects, relevant monuments and physical conditions that will enable recovery of the corner.)



96-133

I HEREBY CERTIFY THAT THIS PLAT, MAP, SURVEY OR REPORT WAS MADE BY ME OR UNDER MY DIRECT PERSONAL SUPERVISION AND THAT I AM A DULY REGISTERED LAND SURVEYOR UNDER THE LAWS OF THE STATE OF IOWA.

Paul H. Helland DATE 3/5/96  
PAUL H. HELLAND, P.E. & R.L.S. IOWA REGISTRATION NO. 6505  
MY REGISTRATION EXPIRES DECEMBER 31, 1997

**HES**  
HELLAND ENGINEERING & SURVEYING, LTD.  
THUNDER RIDGE BANK BUILDING  
2322 WEST 1ST ST., SUITE B  
CEDAR FALLS, IOWA 50613  
319-266-0161

#### List Corners to be Indexed

Corners	Section	Twp	Range
NW	17	88	11

MISC. BK. 319 p. 877

320 p. 54 4/02/96