

Reserved for County Recorder's use.



Doc ID: 011992630001 Type: GEN
Recorded: 08/16/2023 at 09:11:15 AM
Fee Amt: \$7.00 Page 1 of 1
Black Hawk County Iowa
SANDIE L. SMITH RECORDER

File 2024-00002268

Jeffrey P. Helland, 6109 Chancellor Drive, Cedar Falls, Iowa 50613-6916, (319)-266-0161

UNITED STATES PUBLIC LAND SURVEY CORNER CERTIFICATE
OF

LAND SURVEY MONUMENTS SITUATED IN SECTION NO. 17, TOWNSHIP NO. 88 NORTH, RANGE
NO. 11 WEST OF THE FIFTH PRINCIPAL MERIDIAN, BLACK HAWK COUNTY, IOWA.
PREVIOUSLY RECORDED IN #2008010688.

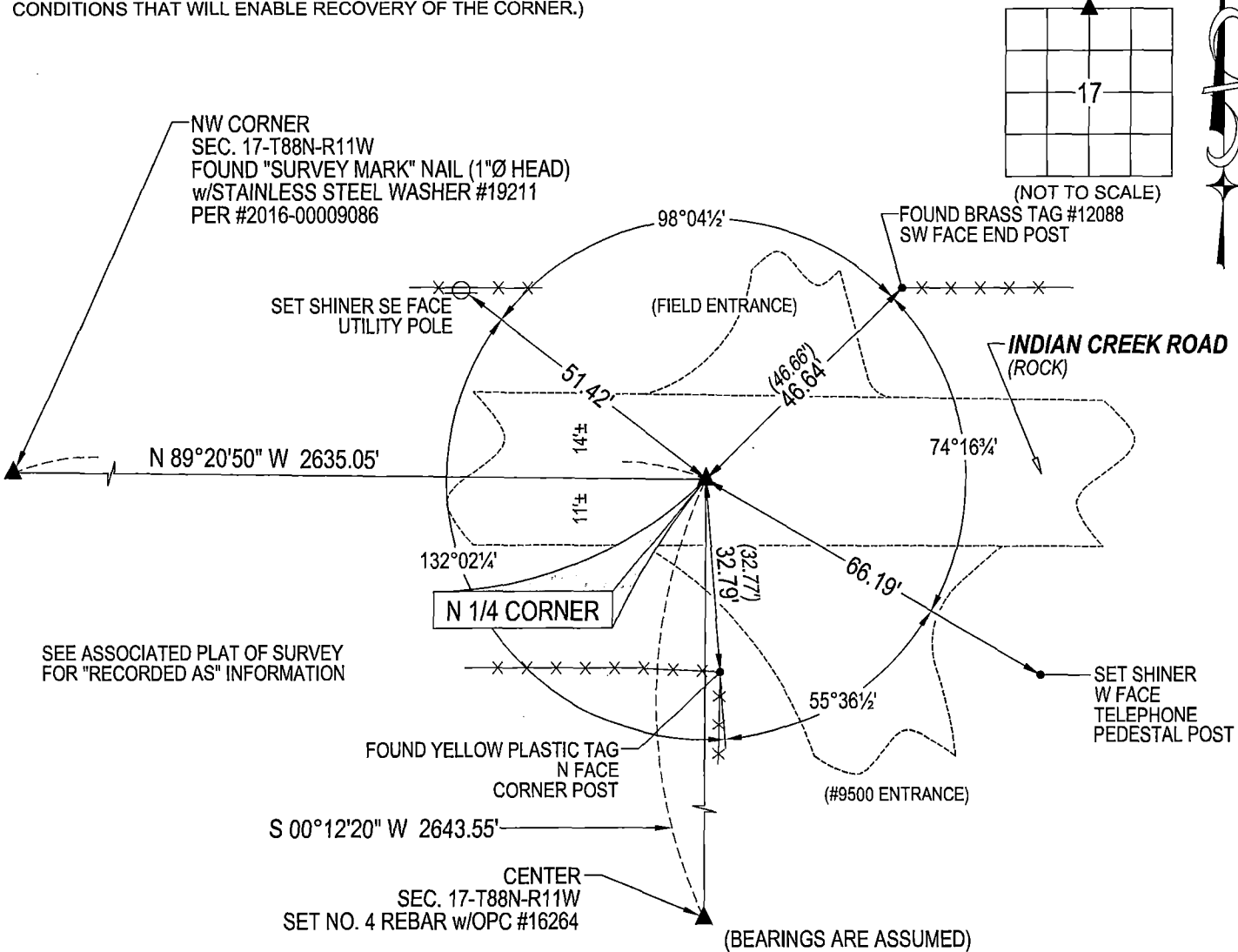
(SHOW REASON FOR PREPARING THIS CERTIFICATE, THE EVIDENCE AND DETAILED PROCEDURES USED IN ESTABLISHING THE
CORNER POSITIONS AND MONUMENTATION FOUND OR PLACED.)

MONUMENT DESCRIPTION AND REMARKS:
NO LONGER THREE VALID REFERENCE TIES. SURVEY COMPLETED IN THE NW OF SEC. 17-T88N-R11W.

N 1/4 CORNER: USPLSCC RECORDED IN #2008010688 DATED 11/20/2007 CALLS FOR [FOUND #4 REBAR LOCATED 5" DEEP @ ± C.L. INDIAN CREEK ROAD (GRAVEL). CORNER UTILIZED FOR N. LINE OF N.W. 1/4 OF SECTION FOR R/W-BRIDGE REPL. PROJECT. EXIST. L.S. TAGS #12088 UTILIZED FOR TIES, YET NOT OF CURRENT RECORD. WPA RECORD TIES OF 6/29/1939 REF. STD. WPA C.M. SET FROM FND. 16"x11"x5" SMOOTH DARK GRANITE STONE, w/NO WPA TIES REF.'ED. CORNER FILED TO UPDATE RECORD.] SEARCH AREA w/METAL DETECTOR AND FOUND NO. 4 REBAR 0.4'± DEEP AND UTILIZED AS CORNER.

PLAN VIEW

(SHOW A MINIMUM OF THREE REFERENCE TIES TO DURABLE PHYSICAL OBJECTS, RELEVANT MONUMENTS AND PHYSICAL CONDITIONS THAT WILL ENABLE RECOVERY OF THE CORNER.)



HELLAND ENGINEERING & SURVEYING, LTD.
6109 Chancellor Drive
Cedar Falls, Iowa 50613-6916
(319)-266-0161

SHINER = 4d. NAIL & 1 5/16"Ø METAL SHINER
BRASS TAG = 4d. NAIL & 13/16"Ø BRASS TAG
OPC = PLASTIC CAP (O=ORANGE, R=RED, Y=YELLOW)
(OO') RECORDED AS FILE NAME: 23-182-28.DWG



I hereby certify that this land surveying document was prepared and the related survey work was performed by me or under my direct personal supervision and that I am a duly licensed Professional Land Surveyor under the laws of the State of Iowa.
Jeffrey P. Helland
License Number 16264
My license renewal date is December 31, 2023.
All pages or sheets are covered by this seal except:

LIST CORNERS TO BE INDEXED			
CORNER	SECTION / TOWNSHIP / RANGE		
N 1/4 CORNER	17	88N	11W
S 1/4 CORNER	8	88N	11W